

# **JASSO OUTLINE**

## **2023**

**|**

## **2024**

**Japan Student Services Organization**

# Strengthening student support as we usher in a new era

## Greetings

Japan Student Services Organization (JASSO) was founded on April 1, 2004, as a core institution to comprehensively implement various student support services for higher education in Japan. The organization has been working towards a target (midterm objective) that had been given to it by the Minister of Education, Culture, Sports, Science and Technology with a five-year deadline and managed to mark its fourth term in April 2019.

Society is changing along with the rapid progression of science and technology, such as ICT and AI, resulting in significant changes in higher education and the lives of students pursuing such education. Moreover, the world in which we live has been transformed by the spread of COVID-19. Student life as supported by JASSO has also undergone unprecedented changes. Under these circumstances, the roles to be fulfilled by JASSO, a national center for student support, are becoming increasingly important. We would like to, in collaboration with the government, universities, and other related organizations, work on further enhancing the following three pillars: Scholarship Programs for Japanese Students, Support Programs for International Students, and Student Support Programs.



First, with respect to the Scholarship Programs for Japanese Students, the New System for Higher Education Aid was begun in April 2020 to expand the breadth of scholarship grants and establish tuition fee reduction and exemption systems over and above what existing scholarship loans (interest-free and interest-bearing loans) offered. Measures to reduce the burden on students who are finding it difficult to repay scholarship loans have also been implemented. As the Japanese government is currently discussing the expansion of the New System for Higher Education Aid into the middle class and the establishment of the Deferred Payment System for Tuition Fees for the postgraduate phase, we will prepare for the prompt operation of those systems as well.

When it comes to Support Programs for International Students, we provide financial aid and information on study-abroad topics both for international students looking to study in Japan and Japanese students studying overseas. International student exchanges, which were stagnant due to the spread of COVID-19, are finally resuming, and the second stage of the TOBITATE! Young Ambassador Program has started this fiscal year. As international exchanges promoted through partnerships among universities regain vitality, we will enhance the various support for international students. We will continue to promote international student exchanges while keeping an eye on the post-COVID-19 world.

With regard to Student Support Programs, we conduct a survey on student life, as well as gathering to provide best practices in student support, helping train faculty and staff members at universities with focuses on providing career education and job support, and supporting students with disabilities. Based on the current trends in internships and job search and on the fact of increasing number of students with disabilities, we are also working on improving student support system at universities and other such institutions while utilizing online tools.

Operating in accordance with the principle of equal opportunity in education as set forth in the Constitution and the Basic Act on Education, we will continue to reinforce the framework of support that will allow motivated and capable individuals to obtain equal opportunities to study and lead meaningful student lives. We will work to improve the contents of our programs to cater to all students by making sure to adopt the point of view of users and carrying out information activities that are clearer and more carefully tailored towards students, parents, school officials, and citizens.

We respectfully ask that you continue to support and cooperate with us in the fulfilment of our mission.

April 2023

**Japan Student Services Organization**  
**YOSHIOKA Tomoya, President**

# Contents

## I. Corporate Profile

Purpose .....	4
History .....	5
Budget .....	5
Organization .....	6
Facilities .....	7

## II. Outline of Programs

### Scholarship Programs for Japanese Students

<b>Status of Scholarships and Trends</b> .....	8
<b>Breakdown of Scholarships by Funding Source</b> .....	8
<b>Student Selection Method</b> .....	9
<b>Scholarship Grants</b> .....	9
Selection Criteria/Monthly Amount	
<b>Scholarship Loans</b> .....	10
Selection Criteria/Loan Amount and Examples of Repayment Plan/Repayment/Relief System for Recipients Who Have Difficulty in Making Repayments	
<b>Providing Information</b> .....	11
Scholarship Consultation Desk/Scholarship Advisor Dispatch Program/Scholarship Repayment Support System	

### Support Programs for International Students

<b>Study in Japan</b> .....	12
International Students in Japan/Study in Japan	
<b>Promotion of Japanese Students Studying Abroad</b> .....	14
Japanese Students Studying Abroad/Providing Information on Studying Abroad/Assistance and Subsidies for Education Expenses for Studying Abroad	

### Student Support Programs

<b>Support Programs for Career Education and Job Search</b> .....	16
Nationwide Guidance Meeting for Career Education and Job Search/Professional Coordinator Seminar for Internship - Basics Level -/Workshops for Career Education and Job Placement Support/Provision and Publication of Information Related to Career Education such as Internships	
<b>Support Programs for Students with Special Needs Such as Students with Disabilities, etc.</b> ...	17
Changes in Number of Students with Disabilities by Disability Type/Preparation of handbooks and case examples/Seminars about Support for Students with Disabilities/Consultation, etc. through the Learning Support Network for Students with Disabilities	
<b>Collection, Analysis, and Provision of information on Student Life and Student Support Efforts at Universities, etc.</b> ...	18
Seminar on the Pressing Issues Related to Student Life	

## III. Information

Surveys .....	19
Media .....	20
Donations .....	21
Facility Guide .....	22

# Purpose

The purpose of JASSO is (as outlined in the Act on the Japan Student Services Organization, Independent Administrative Agency): "to support the promotion of international mutual understanding and the nurturing of creative human resources who will contribute to the next generation, by creating an appropriate environment for students studying in higher education institutions."

## Management Philosophy

As the cornerstone of our activities, the two S's in "JASSO", which stand for "Student Services", embody the objective of our organization to provide the services required to ensure that students can learn with peace of mind at all times, and to watch over the learning and growth of young people who will be responsible for our country's future.

Specifically, we carry out three support programs- scholarships, international student support, and student support- and contribute to the development of individuals who will be responsible for the next generation of society as a national center for student services that provides essential infrastructure to support the learning of our country's students.



## Management Policy

### 1. Support for Students

As a core institution for student support in Japan, we continuously support the education of youth through proactive support for international student exchanges toward globalization and living support for students in response to diverse needs in addition to the provision of financial aid (scholarship grants and loans) to ensure equal educational opportunities, taking into consideration the situation surrounding students and the actual conditions of their life.

### 2. Support for Higher Education Institutions

We support the enhancement of educational functions and strengthening of school management fundamentals by supporting the improvement of the learning environment that is necessary for higher education institutions to provide motivated students with high quality education and fulfill their responsibility to foster capable individuals in society.

### 3. Collaboration and Cooperation with the Government, Universities, and Businesses

By collaborating and cooperating closely with the government, universities, and businesses and pooling their respective resources, abilities, and ideas, we support the learning of students as a society as a whole and actualize higher quality and more effective student support capable of developing individuals needed in society.

### 4. Enhancement of Function as a National Center for Student Services

As a national center for student services, we strengthen the collection and analysis of information pertaining to the actual conditions of student life and student support that make up the basis of the government's relevant policies, conduct investigation and analysis of issues in every corner of Japan and provide information on advanced initiatives.

### 5. Constant Reassessment of Programs and Efficient Management

Under the leadership of the President, along with conducting constant reassessments of programs in response to changes in societal circumstances, we execute the appropriate distribution of management resources and carry out efficient management based on swift decision-making that sufficiently utilizes the special qualities of an independent administrative institution.

## Symbol Mark



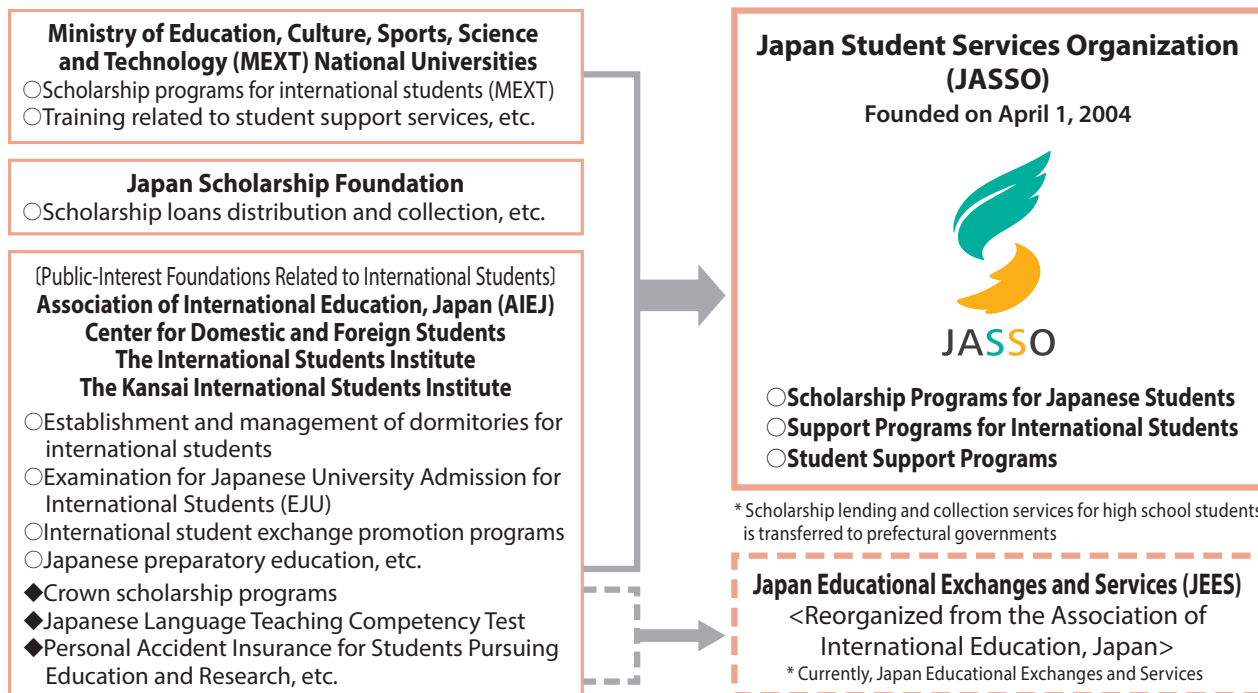
The green part, in the shape of a wing, represents young people opening up to their potential. The orange part, in the shape of the palm of a hand, represents JASSO's role in supporting youth. The two shapes combine to **form the letter "S", which stands for the initial letters of "Student Services"**.

In addition, the green color of the wing represents the sound growth of the younger generation, and the orange color of the palm represents JASSO's philosophy and enthusiasm toward its activities.

Japan Student Services Organization **JASSO**

# History

JASSO was founded on April 1, 2004 by rearranging and integrating the scholarship loan programs provided by the Japan Scholarship Foundation; the support programs for international students provided by the Association of International Education, Japan; the Center for Domestic and Foreign Students; the International Students Institute; the Kansai International Students Institute; and the scholarship programs for international students and the student support programs provided by the government.

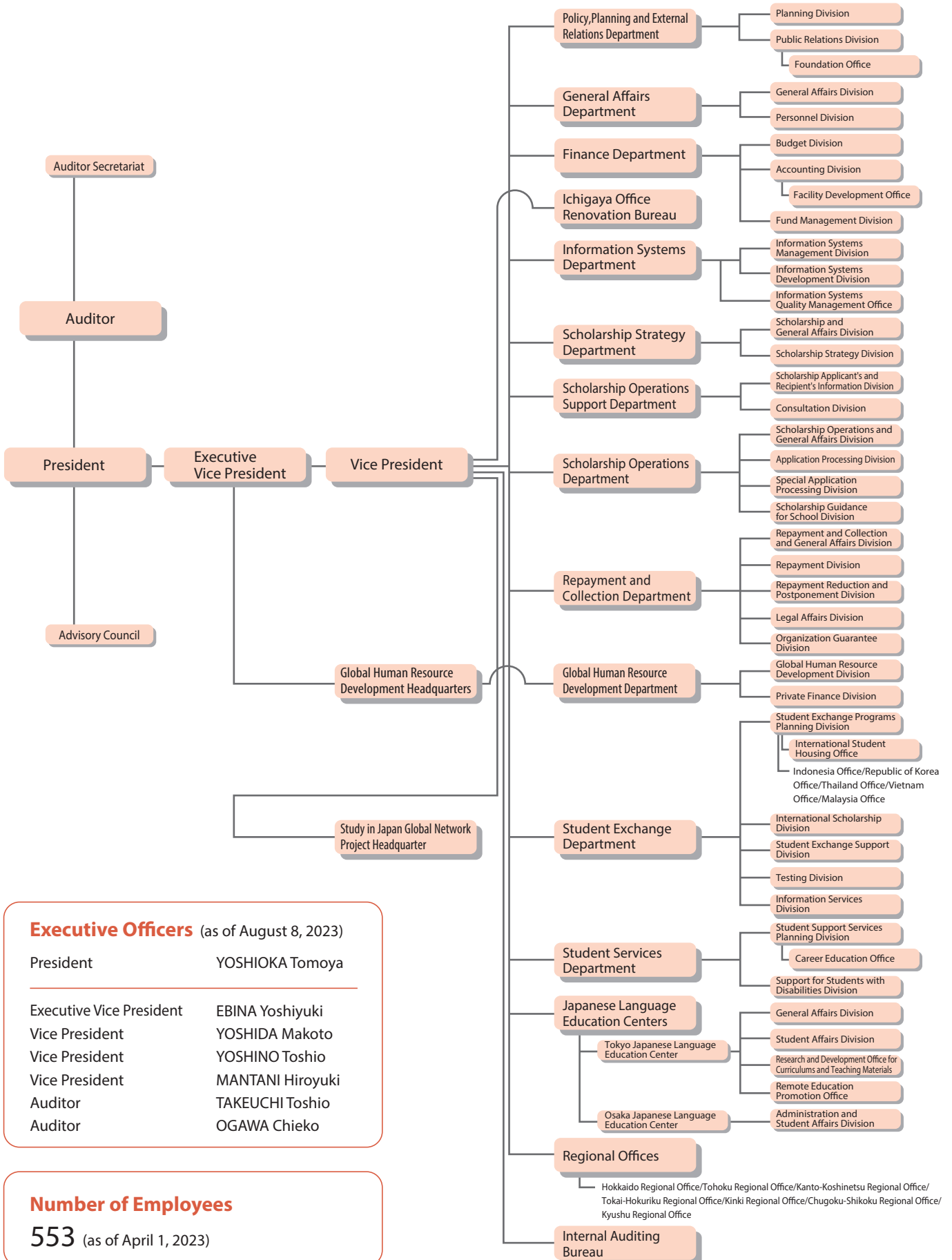


# Budget

The budget for 2023 expenditures is planned to be ¥1,184.5 billion. The breakdown is as follows:

<b>Scholarship Programs for Japanese Students</b>	<b>¥1,163.6 billion</b>
□ Program related to scholarship loans	¥903.5 billion
□ Program related to scholarship grants	¥260.1 billion
<b>Support Programs for International Students</b>	<b>¥14.1 billion</b>
□ Study in Japan, etc.	¥7.0 billion
□ Promotion of Japanese Students Studying Abroad	¥7.1 billion
<b>Student Support Programs</b>	<b>¥100 million</b>
□ Research on student support and provision of information on training, etc.	¥100 million
<b>Other (personnel expenses, general administrative expenses, etc.)</b>	<b>¥6.6 billion</b>

# Organization



# Facilities

## ■ Ichigaya Office

[Policy, Planning and External Relations Department] [General Affairs Department] [Finance Department] [Information Systems Department] [Scholarship Strategy Department] [Scholarship Operations Support Department] [Scholarship Operations Department] [Repayment and Collection Department] [Internal Auditing Bureau]  
10-7 Ichigayahonmura-cho, Shinjuku-ku, Tokyo 162-8412

\*The Ichigaya Office will be temporarily relocated for renovation.

## ■ Higashi-Ginza Office

Nomura Real Estate Bldg., 6-18-2 Ginza, Chuo-ku, Tokyo

## ■ Tokyo Japanese Language Education Center

3-22-7, Kitashinjuku, Shinjuku-ku, Tokyo 169-0074

## ■ Komaba Office

[Student Exchange Department] Testing Division  
4-5-29 Komaba, Meguro-ku, Tokyo 153-8503

## ■ Kanto-Koshinetsu Regional Office

4-5-29 Komaba, Meguro-ku, Tokyo 153-8503

## ■ Aomi Office

[Student Exchange Department] [Study in Japan Global Network Project Headquarter] [Student Services Department]  
2-2-1 Aomi, Koto-ku, Tokyo 135-8630

## ■ Tokyo International Exchange Center (TIEC)

[Plaza Heisei Meeting Facilities] [Residence Halls]  
2-2-1 Aomi, Koto-ku, Tokyo 135-8630

## ■ (In MEXT)

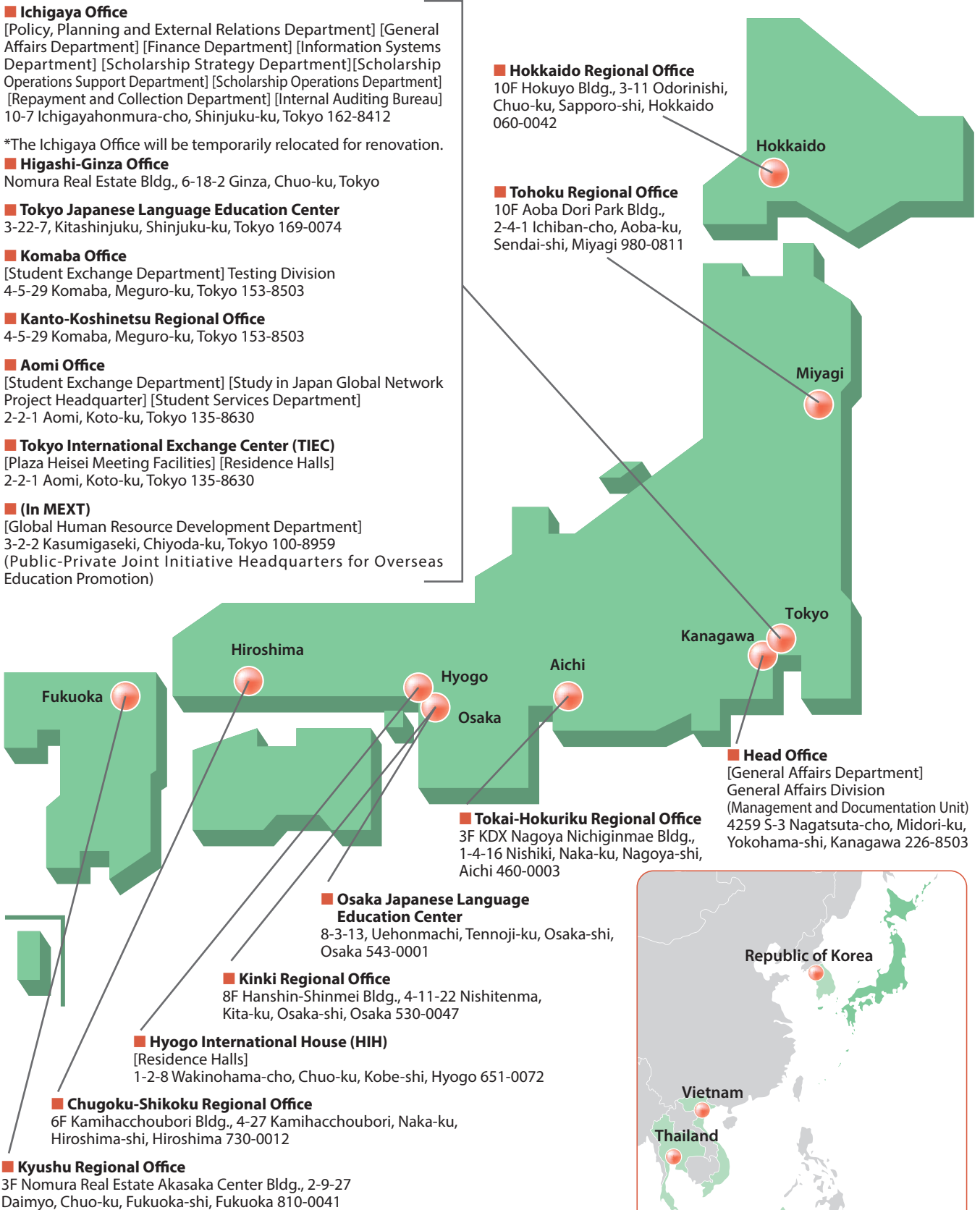
[Global Human Resource Development Department]  
3-2-2 Kasumigaseki, Chiyoda-ku, Tokyo 100-8959  
(Public-Private Joint Initiative Headquarters for Overseas Education Promotion)

## ■ Hokkaido Regional Office

10F Hokuyo Bldg., 3-11 Odorinishi, Chuo-ku, Sapporo-shi, Hokkaido 060-0042

## ■ Tohoku Regional Office

10F Aoba Dori Park Bldg., 2-4-1 Ichiban-cho, Aoba-ku, Sendai-shi, Miyagi 980-0811



## ■ Kyushu Regional Office

3F Nomura Real Estate Akasaka Center Bldg., 2-9-27 Daimyo, Chuo-ku, Fukuoka-shi, Fukuoka 810-0041

## ■ Overseas Offices (JASSO Japan Educational Information Centers)

Indonesia	JASSO Japan Educational Information Center, Jakarta
Republic of Korea	JASSO Japan Educational Information Center, Seoul
Thailand	JASSO Japan Educational Information Center, Bangkok
Vietnam	JASSO Vietnam Office
Malaysia	JASSO Japan Educational Information Center, Kuala Lumpur

## ■ Head Office

[General Affairs Department] General Affairs Division (Management and Documentation Unit)  
4259 S-3 Nagatsuta-cho, Midori-ku, Yokohama-shi, Kanagawa 226-8503

## ■ Tokai-Hokuriku Regional Office

3F KDX Nagoya Nichiginmae Bldg., 1-4-16 Nishiki, Naka-ku, Nagoya-shi, Aichi 460-0003

## ■ Osaka Japanese Language Education Center

8-3-13, Uehonmachi, Tennoji-ku, Osaka-shi, Osaka 543-0001

## ■ Kinki Regional Office

8F Hanshin-Shinmei Bldg., 4-11-22 Nishitenma, Kita-ku, Osaka-shi, Osaka 530-0047

## ■ Hyogo International House (HIH)

[Residence Halls]  
1-2-8 Wakinohama-cho, Chuo-ku, Kobe-shi, Hyogo 651-0072

## ■ Chugoku-Shikoku Regional Office

6F Kamihachchoubori Bldg., 4-27 Kamihachchoubori, Naka-ku, Hiroshima-shi, Hiroshima 730-0012



# Scholarship Programs for Japanese Students

Under the philosophy of "equal opportunity for education" as stipulated in the Constitution and the Fundamental Law of Education, we provide scholarships for achieving students who find it difficult to study due to financial reasons.

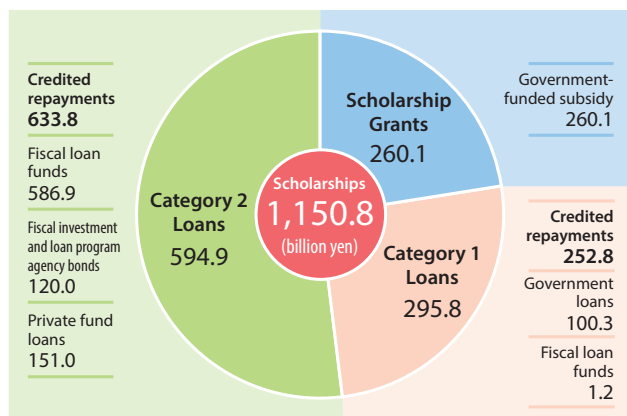
JASSO provides Category 1 Loans (interest-free) and Category 2 Loans (interest-bearing) for students attending graduate schools, universities, junior colleges, colleges of technology and specialized training colleges (post-secondary courses) who have difficulties in pursuing their studies due to financial reasons, as well as scholarship grants to students (excluding graduate students).

## Status of Scholarships and Trends

### ●Status of Scholarships (FY2021 results)

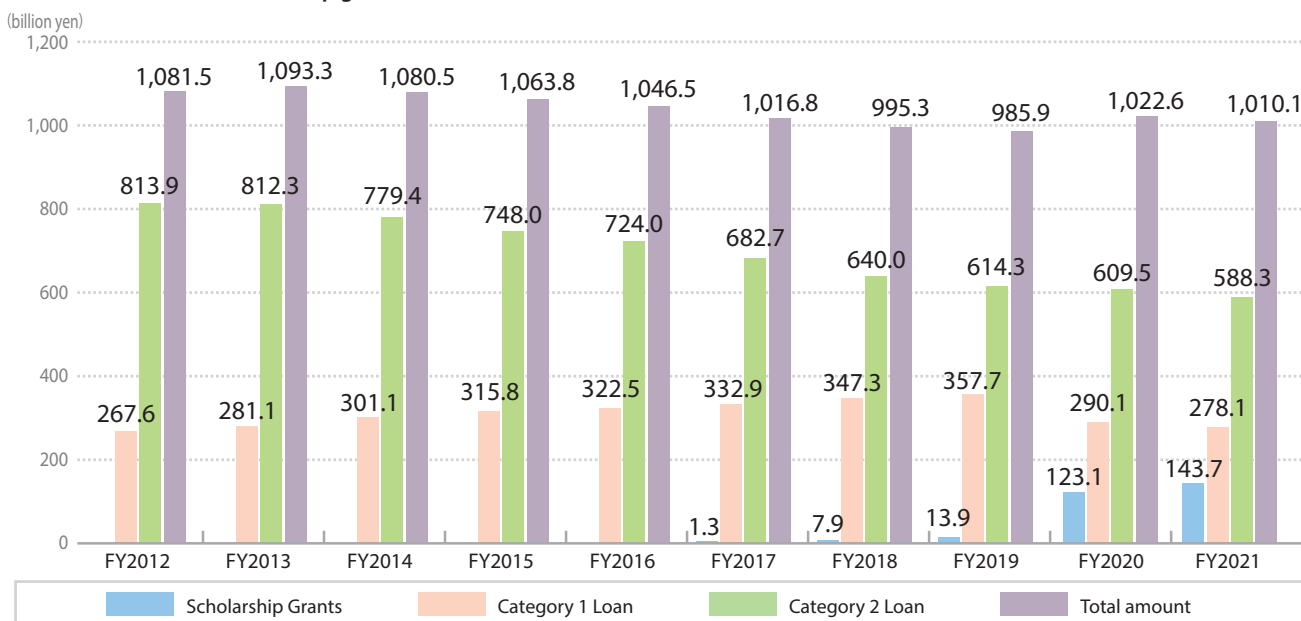
	Scholarship Grants (A)	Category 1 Loans (B)	Category 2 Loans (C)	Total Scholarship Loans (B+C)	Total (A+B+C)
	students	students	students	students	students
Universities	232,198	340,215	517,528	857,743	1,089,941
Junior colleges	15,631	14,924	23,453	38,377	54,008
Graduate schools	—	42,930	5,204	48,134	48,134
Master's courses	—	37,895	4,740	42,635	42,635
Doctoral courses	—	5,035	464	5,499	5,499
Colleges of technology	3,384	1,833	321	2,154	5,538
Specialized training colleges (post-secondary courses)	70,620	73,474	139,019	212,493	283,113
<b>Total</b>	<b>321,833</b>	<b>473,376</b>	<b>685,525</b>	<b>1,158,901</b>	<b>1,480,734</b>

## Breakdown of Scholarships by Funding Source (FY2023 Budget)



Note: 1 The aforementioned scholarship loans (Category 1 Loans and Category 2 Loans) are calculated by subtracting the amount of reimbursement of fiscal loan funds, etc. (955.3 billion yen).  
2 Figures may not add up to totals because of rounding.

### ●Trends in amount of scholarship grants and loans (results)



Note: 1 The number of recipients and the amount of scholarship loans of those students who entered upper secondary schools, which include upper secondary courses of specialized training colleges, in FY 2005 or later are not included because scholarship programs for them were transferred to prefectural or municipal authorities.  
2 Figures may not add up to totals because of rounding.

In the 79 years between 1943 and 2021, JASSO (formerly Japan Scholarship Foundation) extended loans totaling 23 trillion yen.



## Student Selection Method

### ●Prior applications (applying before proceeding to higher education)

An application is made through the high school or other institution the student is attending in the year prior to proceeding to higher education.

\* A successful recipient or an applicant of the Certificate for Students Achieving the Proficiency Level of Upper Secondary School Graduates shall apply directly to JASSO.

### ●Post-entry applications [Regular application] (applying after enrollment)

In principle, an application is made in spring or fall through the university or other institution of higher education to which the student has proceeded. For scholarship grants, the university or other institution of higher education to which the student has proceeded must be eligible for the scholarship grants.

### ●Post-entry applications [Sudden change in household finances, emergency applications]

A student may apply at any time throughout the year in the event of a sudden change in financial situation of primary wage earners due to unforeseen circumstances, such as death or an accident, illness, loss of employment, or damage caused by earthquakes or other disasters.

## ◆ Scholarship Grants ◆

With the New Aid System for Higher Education (entrance and tuition fee reduction and exemption systems and scholarship grants), in principle, scholarship grants that do not need to be repaid are provided to students from households exempt from resident tax and other equivalent households.

## Selection Criteria

A student must satisfy the application requirements (such as those concerning the timing of enrollment in the university or other institution of higher education) and meet criteria (1) and (2) below:

### (1) Academic ability criteria (if the applicant has not been enrolled for at least one year in the university or other institution of higher education)

Must meet any of (i) through (iii) below:

- (i) Average academic rating of 3.5 or higher on a 5.0 scale for all courses taken in a high school or an equivalent institution.
- (ii) Has received the Certificate for Students Achieving the Proficiency Level of Upper Secondary School Graduates.
- (iii) The motivation to study with the goal of becoming an independent and active member of society in the future can be confirmed by examining the student's own study plan.

### (2) Household criteria (income criteria/assets criteria)

Must meet both (i) and (ii) below:

(i) **Income criteria:** The income criteria is as follows.

Support classification	Income criteria
Classification I	The student and primary wage earners' (in principle, parents) municipal tax income ratio is exempt from tax (*1). Specifically, the sum of the stipend calculated standard amount (*2) for the student and primary wage earners is less than 100 yen.
Classification II	The sum of the stipend calculated standard amount for the student and primary wage earners (in principle, parents) is 100 yen or more and less than 25,600 yen.
Classification III	The sum of the stipend calculated standard amount for the student and primary wage earners (in principle, parents) is 25,600 yen or more and less than 51,300 yen.

(\*1) If you are receiving tax deductions for Hometown Tax or a home mortgage, you may be excluded from each or all the classifications.

(\*2) Stipend calculated standard amount ★1 = tax base amount × 6% - (adjusted deduction amount of municipal tax + adjusted amount of municipal tax) ★2 (Round off less than 100 yen)

★1 For people whose municipal tax income ratio is exempt from tax, excluding the case of \*1 above, regardless of the calculation formula, the stipend calculated standard amount will be 0 yen.

★2 If you pay municipal tax to a government ordinance-designated city, the amount (adjusted deduction amount of municipal tax + adjusted amount of municipal tax) is multiplied by 3/4.

(ii) **Assets criteria:** The total amount of the assets of the student and primary wage earners (two persons) is less than 20 million yen (in the case of one primary wage earner, less than 12.5 million yen).

## Monthly Amount

In principle, the monthly amounts indicated in the table below, as determined based on the establisher of the school (public or private) and method of commuting to school (commuting from home or from somewhere other than home), will be paid via bank deposit transfer each month in accordance with the applicable support classification (any of Classifications I through III) as determined on the basis of income standards outlined above.

Classification based on school category and household income		National and local public schools		Private schools	
		Commuting from home	Commuting from somewhere other than home	Commuting from home	Commuting from somewhere other than home
Universities and junior colleges Specialized training colleges (post-secondary courses)	Classification I	29,200 yen (33,300 yen)	66,700 yen	38,300 yen (42,500 yen)	75,800 yen
Colleges of technology (4th and 5th year students)	Classification I	17,500 yen (25,800 yen)	34,200 yen	26,700 yen (35,000 yen)	43,300 yen

\* Classification II amounts to 2/3 of Classification I, and Classification III amounts to 1/3.

\* Amounts in parentheses in the table above apply to students who live with primary wage earners on welfare (regardless of the type of social aid) or commutes to school from an orphanage.

# Scholarship Loans

JASSO provides the Category 1 Loans (interest-free) and Category 2 Loans (interest-bearing) and they have different academic ability and household criteria. These can also be used when studying abroad. (Separate conditions required.)

## Selection Criteria

The selection criteria are based on the following standards: student's character, academic ability, and his/her family's financial situation.

### ● Academic ability and household criteria (for Post-entry application of university students in FY2023)

(unit : million yen)

Classification		Academic ability requirements (In the case of a first-year student in university or other institution)	Income requirements: Upper limit of annual income (based on a family of four and commuting from home)	
			Households based on employment income	Households not based on employment income
Category 1 Loans (interest-free)	National and local public	Students who fall into any one of the following categories: (i) Have obtained an average academic rating of 3.5 or higher on a 5-point scale in 2nd and 3rd grades of high school. (ii) Obtained the Certificate for Students Achieving the Proficiency Level of Upper Secondary School Graduates. * Criteria are relaxed for those who come from a family whose primary wage earners (father, mother or a guardian who supports a household) are exempt from residential tax.	approx. 7.42	approx. 3.45
	Private		approx. 8.06	approx. 3.98
Category 2 Loans (interest-bearing)	National and local public	Students who fall into any one of the following categories: (i) Have demonstrated above-average academic performance in high school. (ii) Demonstrate excellence in a specific field. (iii) Be motivated and qualified to accomplish studies. (iv) Obtained the Certificate for Students Achieving the Proficiency Level of Upper Secondary School Graduates and recognized to be equivalent to one or more of the above criteria.	approx. 10.96	approx. 6.88
	Private		approx. 11.49	approx. 7.41

Note: The selection criteria are applied to the annual income of the individuals who support the household expenses of the applicant's family (father and mother, or person who supports the household expenses in lieu thereof).

## Loan Amount and Examples of Repayment Plan

Students entitled to receive a Category 1 Loan (interest-free scholarship loan) can choose an income-contingent repayment plan, in which the installment amount is determined based on the income from the previous year, in addition to the existing repayment plan (fixed amount repayment plan).

### ● Scholarship loan amount and example of repayment plans (as of FY2023)

Category 1 Loans (interest-free) - In the case of recipients entering school from April 2018 onward								
Classification		Monthly amount (¥)	Loan period (months)	Total repayment (¥)	Monthly repayment (¥)	Number of installments	Years for repayment	
University (undergraduate)	National and local public	At home	48	2,160,000	12,857	168	14	
		Away from home		40,000	1,920,000	12,307	156	13
	51,000			2,448,000	13,600	180	15	
	Private schools	At home		40,000	1,920,000	12,307	156	13
				54,000	2,592,000	14,400	180	15
		Away from home		40,000	1,920,000	12,307	156	13
				50,000	2,400,000	13,333	180	15
				64,000	3,072,000	14,222	216	18
				20,000	960,000	8,000	120	10
	National, public, and private	At home/ Away from home		30,000	1,440,000	9,230	156	13

Category 2 Loans (interest-bearing)									
Classification	Monthly amount (¥) (See Note 6.)	Loan period (months)	Total borrowed amount (¥)	Estimated repayment amount (¥)				Number of installments	Years for repayment
				In the case of actual interest rate (0.905%)		In the case of the maximum interest rate (3.0%)			
				Total repayment amount (principal + interest)	Monthly repayment	Total repayment amount (principal + interest)	Monthly repayment		
University (undergraduate)	20,000	48	960,000	1,008,663	8,405	1,126,462	9,386	120	10
	50,000		2,400,000	2,578,053	14,322	3,018,568	16,769	180	15
	80,000		3,840,000	4,216,365	17,568	5,167,586	21,531	240	20
	120,000		5,760,000	6,324,618	26,352	7,751,445	32,297	240	20

Note: 1 The interest rate of 0.905% is the interest rate applied to those who completed the loan period at the end of March 2023, and the interest rate of 3.0% is the maximum rate stipulated by law.

2 Interest for the period from the time of graduation until commencing repayments is included in the total amount of repayment.

3 There are cases where figures may not add up to the total repayment amount even when the monthly installment amount is multiplied by the number of payments due to rounding adjustment.

4 If the annual income of the primary wage earners at the time of application is over a certain amount, the maximum monthly amounts for each category of Category 1 Loans cannot be selected.

5 When using both the scholarship grant (or reduction/exemption from tuition fees) and the Category 1 Loan, the monthly loan amount of the Category 1 loan is limited.

6 The monthly amount for Category 2 Loans can be selected in the range of 20,000 yen to 120,000 yen (in units of 10,000 yen).

### Repayment

Repayments are deducted from the recipient's bank account beginning seven months after the completion of the loan period.

For recipients who have chosen the fixed-amount repayment plan, repayments are to be made in monthly installments or both monthly and semiannual installments, and the number of repayment installments to be made will be determined according to the total amount of the loan (borrowed amount).

For recipients who have chosen the income-contingent repayment plan, repayments are to be made in monthly installments and the monthly repayment amount will vary depending on the income of the recipient in the previous year.

It is possible to pay installments not due in whole or in part in advance of the payment deadline.

### Relief System for Recipients Who Have Difficulty in Making Repayments

For recipients who have difficulties in making repayments, JASSO provides the following relief systems.

#### ●Reduction of the monthly installment

This is a system for reducing installments to one-half or one-third of the originally promised amount and extending the repayment period for those who have difficulty in making repayment for reasons such as disasters, sickness, or other financial situations, but are still able to pay in part through smaller installments.

#### ●Postponement of repayment deadline

Loan recipients who are receiving welfare, have difficulties in making repayments due to disaster, sickness, injury, financial hardship, unemployment, etc., or if are still enrolled in a university, etc., may be granted a postponement of the payment deadline upon request.

#### ●Exemption from repayment

When loan recipients die or are diagnosed as being unable to work due to physical or mental disabilities, the loan recipients may be exempted from repayment, upon request. There is also the "Exemption from Repayment for Graduate School Students with Particularly Outstanding Achievements" for Category 1 Loans.

## ◆ Providing Information ◆

### Scholarship Consultation Desk

●A "Scholarship Consultation Desk" has been established to provide over-the-phone counseling regarding scholarship loans, grants, and repayments.

➤ <https://www.jasso.go.jp/shogakukin/oyakudachi/toiawase/index.html>

●For inquiries about scholarships, FAQs and the chatbot service are available at the scholarship support website.

➤ <https://www.shogakukinsupport.jp/>

### Scholarship Advisor Dispatch Program

Financial planners who have completed the JASSO training and are certified "scholarship advisers" can be dispatched to schools and other institutions for free. These advisers will explain scholarships and aid and advise on financial planning for tuitions and use of aid.

Details of the program and method of application for dispatch ➤ <https://www.jasso.go.jp/shogakukin/adviser/index.html>

### Scholarship Repayment Support System

#### ●Scholarship repayment support system offered by municipalities

A system for supporting the repayment of scholarship loans is available to those who work for local companies through collaboration between municipalities and local industries.

➤ <https://www.jasso.go.jp/shogakukin/chihoishien/sosei/seido/index.html>

#### ●Scholarship repayment support system offered by companies (repayment by proxy)

As a scheme to support employees who repay scholarship loans while working for companies, a system for supporting all or part of the repayment amount is available to them.

➤ <https://www.jasso.go.jp/shogakukin/kigyoshien/kigyo.html>

# Support Programs for International Students

With globalization, JASSO implements various support programs for both the acceptance of international students and dispatch of Japanese students overseas to further promote international student exchanges.

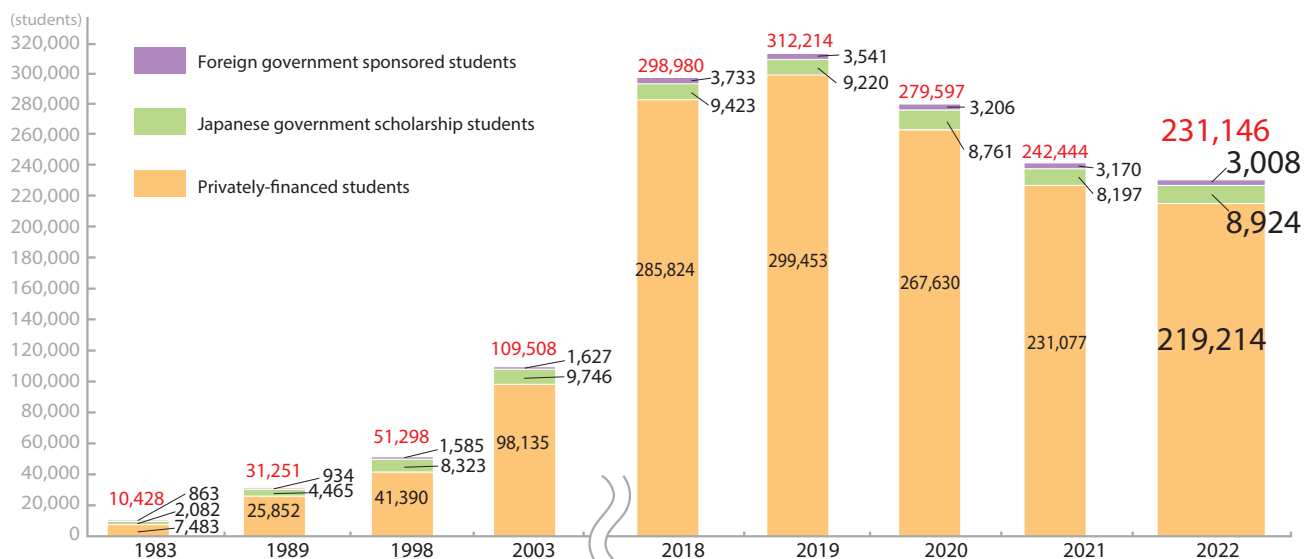
## ◆ Study in Japan ◆

To promote the positive and strategic acceptance of excellent international students, JASSO implements various support activities such as providing information on studying in Japan, implementing the Examination for Japanese University Admission for International Students (EJU), providing Japanese language and preparatory education, assistance and subsidies for schooling expenses, support for accommodations, promotion of international student exchanges, follow-up, and more, for all prospective, active, and former international students.

### International Students in Japan

#### ● Trend in number of inbound international students (as of May 1, each year)

There were approximately 11,000 (4.7%) fewer international students accepted than there were in 2021. Of the international students in Japan, 93.0% come from Asia with 44.9% coming from China, 16.2% coming from Vietnam, and 10.5% coming from Nepal.

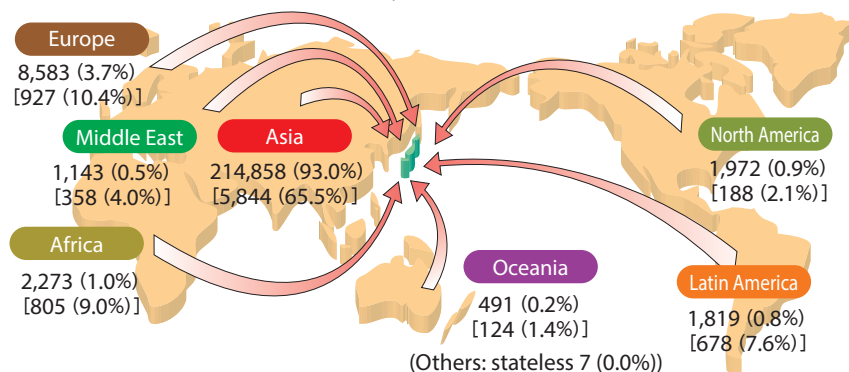


\*As the residence statuses of "College Student" and "Pre-college Student" were merged in accordance with the revision (promulgated on July 15, 2009) of the "Immigration Control and Refugee Recognition Act" (enforced as of July 1, 2010), since the survey in 2011, the total number of international students including international students enrolled in Japanese language institutions are also included.

#### ● Number of Inbound International Students (Including Japanese Language Institutions) by Home Region (as of May 1, 2022)

Total: 231,146 students

\*The number in brackets indicates the number of Japanese government scholarship students (8,924 students in total).



\* Source: "Annual Survey of International Students in Japan" by JASSO

#### ● Number of Inbound International Students (including Japanese language institutions) by Country/Region (as of May 1, 2022)

Country/Region	Number of International Students
China	103,882
Vietnam	37,405
Nepal	24,257
Republic of Korea	13,701
Indonesia	5,763
Taiwan	5,015
Sri Lanka	3,857
Myanmar	3,813
Bangladesh	3,313
Thailand	2,959
Others	27,181
<b>Total</b>	<b>231,146</b>

## Study in Japan

Before Admission

**Providing information through websites, social media, publications, and events**● **Providing information through websites and social media**

Study in Japan Official Website and JASSO websites, as well as the Student Exchange Department and Overseas Office websites and social media, provide information on studying in Japan.

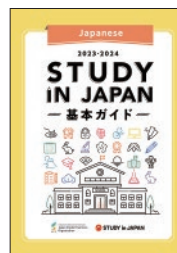
● **Publications**• **STUDY IN JAPAN - Basic Guide -**

(B5 size, 12 pages, revised annually, Available for download at the Study in Japan Official Website, in Japanese, English, and several languages) A guidebook providing information to those who wish to study in Japan.

• **Scholarship for International Students in Japan**

(A4 size, 38 pages, revised annually, Available for download at the Study in Japan Official Website, in Japanese, English)

A list of scholarships offered by JASSO, the Japanese government, local governments, and private foundations.

● **Holding events providing information on studying in Japan**

In order to provide the latest and most accurate information, we hold Study in Japan Fairs for overseas high school students, university students, and school guidance counselors (offline and online) and College Guidance Fairs for international students who wish to pursue higher education in Japan.

**Japanese language education at the Japanese Language Education Centers/ Preliminary education for advancement**

Based on the understanding that JASSO is playing a part in national policy relating to international students, JASSO has established Japanese Language Education Centers in Tokyo and Osaka. These centers provide education on the Japanese language and core subjects for those who wish to enter higher education institutions in Japan.

**Examination for Japanese University Admission for International Students (EJU)**

Since FY2002, EJU has been conducted twice a year, both in Japan and overseas, to evaluate Japanese language proficiency and the basic academic abilities of international students who wish to study at universities (undergraduate programs) and other higher education institutions in Japan.

While Enrolled

**Assistance and Subsidies for Schooling Expenses for Studying in Japan**● **Monbukagakusho Honors Scholarship for Privately-Financed International Students**

To promote the strategic acceptance of excellent international students and to contribute to the internationalization of Japanese higher education institutions, the Monbukagakusho Honors Scholarship is provided to privately-financed international students at Japanese higher education institutions who are outstanding in both performance and character and who have difficulties in pursuing their studies for financial reasons.

● **Providing scholarships to Japanese Government (MEXT) Scholarship students**

JASSO provides payment services of allowances (scholarship money and others) to Japanese Government (MEXT) Scholarship students (including screening for selection).

● **Student Exchange Support Program (Scholarship for Study in Japan under Agreement)**

This scholarship is provided to international students who study at Japanese higher education institutions for a short term within one year under student exchange agreements.

**Support for International Student Accommodations/International Student Exchange Promotion Programs**● **Management of Tokyo International Exchange Center (TIEC) and Hyogo International House (HIH), and conduct of exchange programs as Hubs of International Exchange**● **Support for universities' leasing accommodations for international students**● **Supporting international students' involvement in the community**● **International Student Associations in Japan Network Promotion Project**

After Graduation

**Follow-up Services**● **Follow-up research fellowship**● **Follow-up research guidance**● **Career support information for international students**● **Dissemination of information via Facebook (Japan Alumni Global Network)**

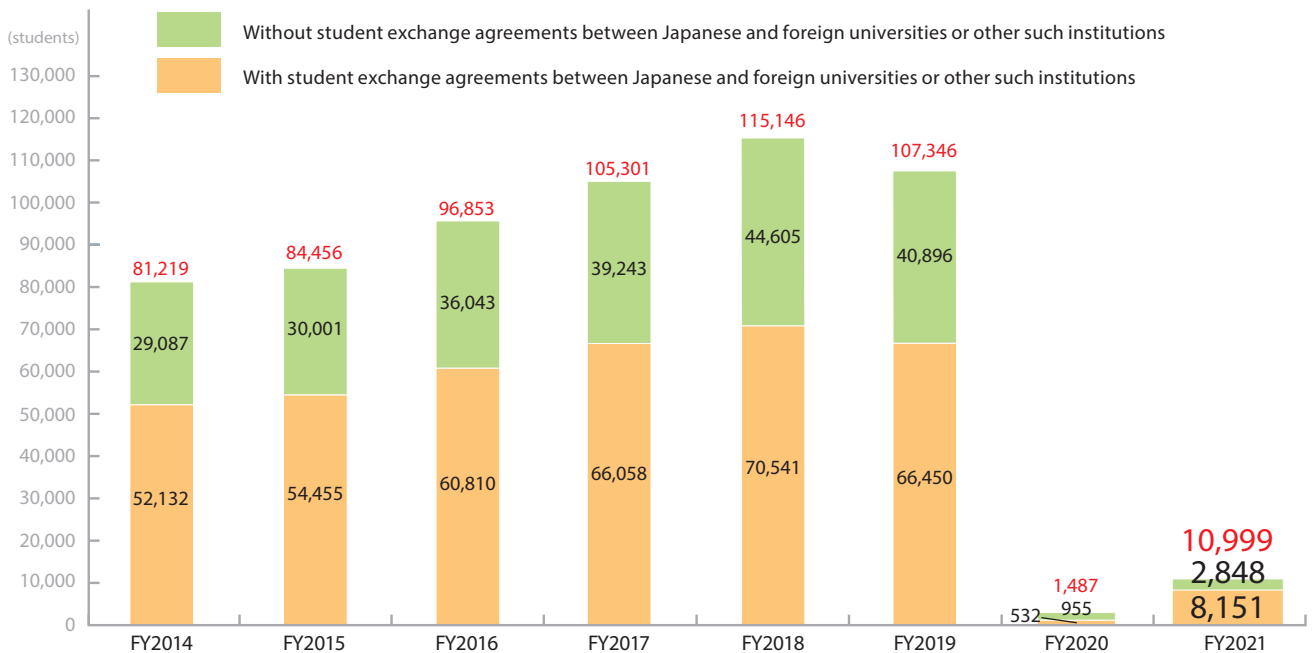
# ◆ Promotion of Japanese Students Studying Abroad ◆

In order to provide aid to all motivated and capable Japanese students to study abroad, JASSO conducts various support activities, including payment and assistance for educational expenses and providing information on studying abroad.

## Japanese Students Studying Abroad

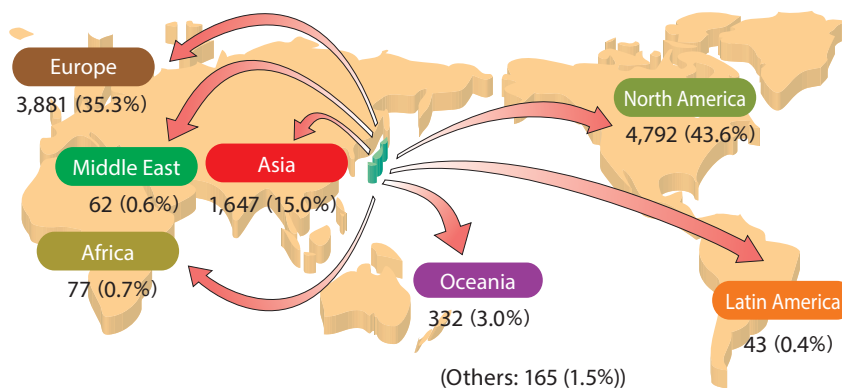
### ●Trend in Japanese students studying abroad

In FY2021, approximately 10,999 Japanese students started studying abroad. Despite the continued impact of COVID-19, this figure increased compared to that in FY 2020.



### ●Status of Japanese students started studying abroad in FY2021

Total: 10,999 students



\* Source: "Survey on Japanese students studying abroad" by JASSO

### ●Number of Japanese students studying abroad by destination country/region (in FY2021)

Country/Region	Number of Japanese Students
USA	3,603
Republic of Korea	1,209
Canada	1,189
UK	862
France	531
Germany	520
Australia	319
Spain	234
Sweden	175
Ireland	158
Others	2,199
<b>Total</b>	<b>10,999</b>

## Providing Information on Studying Abroad

### ●Providing information through websites

The "Kaigairyugaku Joho Site" provides basic information on studying abroad, including planning, various administrative procedures, scholarship programs, appropriate use of agents, and information about studying in major destination countries.

### ●Publications

#### •"Watashi ga Tsukuru Kaigai Ryugaku"

(A5 size, 84 pages, free distribution, in Japanese) Provides general information to those who wish to study in overseas higher educational institutions.

#### •"Scholarships for Study Abroad"

(A4 size, 96 pages, revised annually, free distribution, in Japanese) Provides information on scholarships offered by JASSO, local governments, foreign governments, and private foundations.



### ●Study Abroad Fair and Study Abroad Seminars

The Study Abroad Fair is held to provide accurate information on such topics as educational systems in various countries and regions around the world, the scholarship system, procedures for studying abroad, and student life in general in order to enable Japanese citizens wishing to study abroad to effectively prepare for their endeavors in this regard. In FY2023, this fair will be held online. (scheduled to be held in July 2023)

### ●Assistance in recruiting and selecting recipients for scholarships from foreign governments and related organizations

JASSO serves as the Japan-side coordinator to assist in the recruitment and selection of recipients for scholarships from foreign governments and related organizations.

## Assistance and Subsidies for Education Expenses for Studying Abroad

### ●Student Exchange Support Program

- **Scholarship for Study Abroad under Agreement:** This scholarship is provided to Japanese students who study at higher education institutions overseas for a short term within one year under student exchange agreements.
- **Undergraduate scholarship for degree seeking students:** This scholarship is provided to Japanese students going abroad and pursuing a bachelor's degree from an overseas university.
- **Graduate scholarship for degree seeking students:** This scholarship is provided to Japanese students going abroad and pursuing a master's or doctoral degree from an overseas university.

### ●Japan Public-Private Partnership Student Study Abroad Program

#### -TOBITATE! Young Ambassador Program-

[Background] "The Basic Policy on Economic and Fiscal Management and Reform 2022," which was approved by the Cabinet in June 2022, clearly proclaims that the government will promote study abroad programs for young people, and the Direction of Global Policy Focusing on Higher Education - For Restoration of Student Exchanges that Reduced Drastically due to COVID-19, which was announced by the Ministry of Education, Culture, Sports, Science and Technology in July 2022, states the policy of enhancing industry-academia-government efforts aimed at bringing the number of students studying abroad back to at least the level before the spread of COVID-19 by FY 2027. In order to achieve those policies, the second stage of TOBITATE! Young Ambassador Program has started as of FY 2023.

JASSO also continues to support Japanese students studying abroad through the Global Human Resource Development Community Program in cooperation with companies, the government, schools, and students in order to provide opportunities for all young students with the desire and capability to study abroad.

[Purpose of the Program] With support from companies participating in the "Global Human Resource Development Community," JASSO will provide scholarships, etc., to Japanese students in order to develop "individuals with skills matching the needs of industry" and "Individuals who can contribute to Japan and the world by playing active roles across borders with a global view." This program will also provide a network of students as a place for pre- and follow-up training sessions, interaction, and co-learning among students after studying abroad to improve the quality of their experiences.

[Outline of the Program] JASSO screens each study abroad plan that is recognized as a worthwhile educational learning activity by schools, and provides scholarships and pre- and follow-up training sessions to students who are accepted into the program.



Pre-trainings



# Student Support Programs

JASSO aids universities and other such institutions in carrying out career education/employment support and support for disabled students, by collecting and providing best practices, surveys, trainings, and other relevant items.

## ◆ Support Programs for Career Education and Job Search ◆

JASSO supports the promotion of career education at universities, such as diverse internship programs, and cooperates with industries to promote education provided through industry-academia-government collaboration by hosting seminars, etc., and collecting and publishing best practices.

### Nationwide Guidance Meeting for Career Education and Job Search

**Aim:** Regarding job searches and recruitment for those scheduled to graduate from universities, junior colleges, and colleges of technology, JASSO organizes a meeting where relevant ministries of the government explain policies and measures, panel discussions are held between universities and companies, case examples are given, and more, in order to contribute to better career education and job placement support, such as the development of human resources through joint efforts among industry, universities and local governments.

**Participants:** Managers and staff in charge at universities, etc., representatives from companies and regional public entities

### Professional Coordinator Seminar for Internship - Basics Level -

**Aim:** To promote career education, such as internships arranged by universities, etc., JASSO enhances the skills and know-how of participants through lectures by experts, panel discussions and group work. Through those activities, the participants gain knowledge and improve practical skills necessary to become an expert.

**Participants:** Faculty and staff engaged in career education such as internships at universities and those interested in internships

### Workshops for Career Education and Job Placement Support

**Aim:** To enhance a consistent support system from career education to job placement at universities, JASSO promotes more practical industry-academia education through lectures and group work in collaboration with industry, sharing perceptions concerning requests and issues shared by both academia and industry.

**Participants:** Managers, faculty, and staff engaged in career education and job placement support at universities, human resource recruitment managers at companies, and other entities



### Provision and Publication of Information Related to Career Education such as Internships

Information on best practice of career education programs, such as internships organized by universities and promotion councils around the country are introduced through the links posted on our website.

➤ [https://www.jasso.go.jp/gakusei/career/internship\\_information/index.html](https://www.jasso.go.jp/gakusei/career/internship_information/index.html)

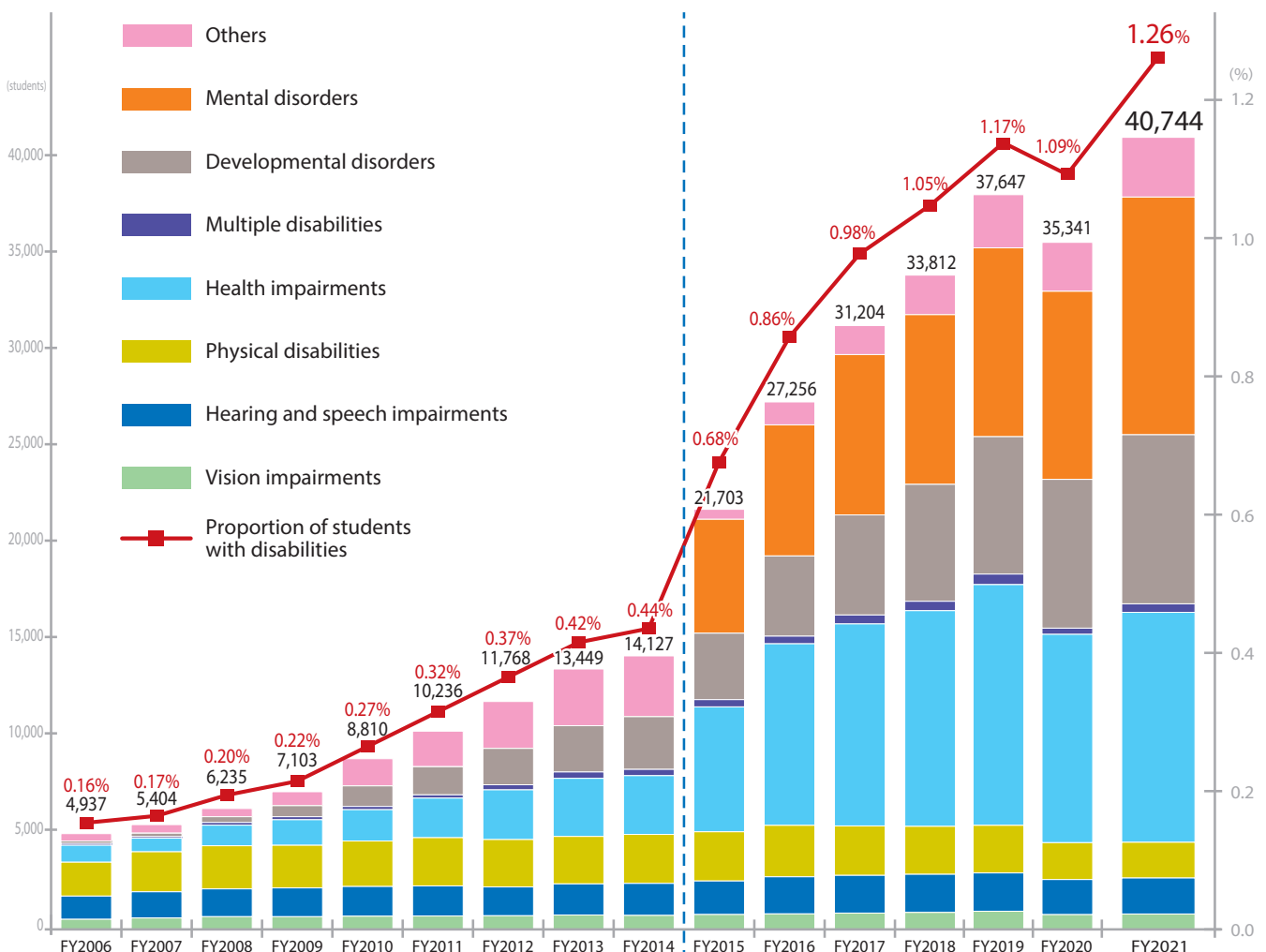


## ◆ Support Programs for Students with Special Needs Such as Students with Disabilities, etc. ◆

In Japan, the number of students with disabilities who are enrolled in universities, etc. has been increasing, and the number of students with developmental disabilities, health impairment, and mental health issues in particular has been increasing rapidly. JASSO is involved in promoting programs, conducting surveys, creating handbooks and collections of best practices, hosting seminars, and more in order to support the improvement of the system for the support of students with disabilities at universities and other educational institutions.

### Changes in Number of Students with Disabilities by Disability Type

The number of students with disabilities has been increasing each year, and accounted for 1.26% of all students in FY2021 (40,744 students).



\* Source: "Survey on support for students with disabilities at universities, etc." by JASSO

Note: 1 "Students with disabilities" in this survey means students who have "a physical disability certificate, a mental disability certificate, or a rehabilitation certificate," or "the students for whom disabilities were discovered by a medical checkup, etc."

2 "Health impairment" includes functional impairment of heart, kidney, respiratory organs, bladder or rectum, small intestine, liver, etc.; immune system dysfunction due to human immunodeficiency virus, neurological disorder, malignant neoplasm, etc., or continuous physical weakness requiring restrictions on daily life activities.

3 Among disability types that had been classified in "Others" until FY2014, psychiatric, mental, and intellectual disabilities were collectively classified into the independent category "Mental disorders" in FY2015. In addition, as of FY2019, "Gender dysphoria," which was classified as an "Other mental disorder" under "Mental disorders," has been excluded.

4 The values in the graph include the number of students at "universities," "junior colleges," and "colleges of technology." Research students, special register students, auditing students, and students in special courses are not included.

5 The decrease in the number of students with disabilities in FY2020 is believed to be because some universities, etc. were unable to sufficiently identify the number of students with disabilities due to the fact that classes were held online in response to the declaration of an emergency due to the outbreak of COVID-19.

## Preparation of handbooks and case examples

- Reasonable Accommodation Handbook -For staff and faculty supporting students with disabilities-
- Case examples on preventing and resolving disputes involving students with disabilities

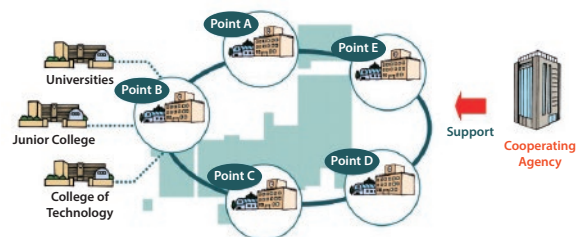


## Seminars about Support for Students with Disabilities

- **Seminars for understanding and enlightenment about the Act for Eliminating Discrimination against Persons with Disabilities**  
In the context that private universities must provide reasonable accommodation for persons with disabilities following the revised Act for Eliminating Discrimination against Persons with Disabilities, we hold seminars to explain the basic concepts about the provision of reasonable accommodation by targeting schools with no students with disabilities or by staff, faculty, and administrators who take charge of support for students with disabilities for the first time.
- **Seminars on support for students with disabilities by specialized themes**  
Regarding the issues to be tackled by universities that are stated in the Commission Report on Higher Education Support for Students with Disabilities summarized by the Ministry of Education, Culture, Sports, Science and Technology (the second summary), we hold seminars to provide information on the improvement of support systems focusing on specialized themes.
- **Training for Development of Staff in Charge of Support for Students with Disabilities**  
We provide training through a lecture and exercise-based curriculum divided into a basic program designed for participants to acquire basic knowledge of the support for students with disabilities and improve the ability to handle such students and an applied program designed for participants to acquire the knowledge necessary to adjust support methods to meet support needs, develop specific support plans, and coordinate with the parties concerned.
- **Workshops on Support for Students Mental Health and Development**  
We hold workshops aiming to deepen the understanding of issues and needs regarding support for modern students' mental health and development and to promote the further enhancement of a safety net for students with mental health issues by sharing basic knowledge about mental health and counseling, as well as information on advanced initiatives and holding discussions.

## Consultation, etc. through the Learning Support Network for Students with Disabilities

JASSO executes initiatives in response to various consultations from universities, etc., nationwide pertaining to learning support for students with disabilities through the Learning Support Network for Students with Disabilities\*, which aims to improve the learning support system for students with disabilities. (\*Schools represented at: Sapporo Gakuin University, Miyagi University of Education, University of Tsukuba, University of Toyama, Nihon Fukushi University, Doshisha University, Kwansei Gakuin University, Hiroshima University and University of Teacher Education Fukuoka; affiliated institutions: Tsukuba University of Technology, National Institute of Special Needs Education and National Rehabilitation Center for Persons with Disabilities)



Example of Learning Support Network for Students with Disabilities

## ◆ Collection, Analysis, and Provision of information on Student Life and Student Support Efforts at Universities, etc. ◆

Various kinds of surveys have been conducted to ascertain the situation of student life and its support. Related to student support urgent issues, the seminars on the topics have been held.

## Seminar on the Pressing Issues Related to Student Life

We hold an annual seminar on the pressing issues of student support at universities and other such institutions. The experts on the topic give lectures, and some exceptionally good examples of student support are introduced in the seminar.

# Surveys

We are conducting various surveys on student support.

\*Results are available on the following website:

➤ <https://www.jasso.go.jp/statistics/index.html>

## Surveys on the living situation of students

- **Survey on Student Life [every two years]**
- **Survey on Student Life in colleges of technology [every two years]**
- **Survey on Student Life in professional training colleges [every two years]**  
A survey on the financials and living conditions of students enrolled in universities, junior colleges, graduate schools, colleges of technology, and professional training colleges.

## Surveys on Scholarship Programs

- **Survey on scholarship programs implemented in Japan [every three years]**  
A survey on the scholarship programs provided by schools, local public organizations, private organizations, individuals, etc. in Japan.
- **Survey on attributes of the scholarship loan recipients [every year]**  
A survey on the attributes of the persons in receipt of scholarship loans from JASSO.

## Surveys on International Students

- **Annual survey of international students in Japan [every year]**  
A survey of international students in higher educational institutions and Japanese language institutions (hereinafter referred to as HEIs) in Japan as of May 1.
- **Survey on international students' careers [every year]**  
A survey on the careers of international students in HEIs in Japan after graduation or completion.
- **Survey on Japanese students studying abroad [every year]**  
A survey of Japanese students studying abroad for the purpose of education, research, learning activity, etc.
- **Survey on the acceptance of international students [every year]**  
A survey of international students accepted by HEIs in Japan in the year concerned.
- **Survey on international students enrolled in short-term educational programs [every year]**  
A survey on the acceptance of international students for short-term education programs of less than six months at universities in Japan without the aim of earning degrees.
- **Lifestyle survey of privately-financed international students [every two years]**  
A survey on the lifestyle of privately-financed international students studying in Japan.
- **Follow-up survey on Japanese students who have studied abroad [as necessary]**  
A survey on the motivation for studying abroad, the sense of accomplishment, the methods of gathering information on studying abroad, career options after studying abroad, etc., of Japanese students who have studied abroad.

## Surveys on Student Support Conducted by Universities, etc.

- **Survey on support for students with disabilities at universities, etc. [every year]**  
A survey on enrollment of students with disabilities in universities, junior colleges and colleges of technology, and the support for them.
- **Survey on efforts for student support at universities, etc. [every two years]**  
A survey on the current state of student support at universities, junior colleges, and colleges of technology.

## Others

- **JASSO Annual Report [every year]**  
JASSO's activity record is introduced via various data every year.

JASSO provides the latest information on student support through its website, social media, and e-mail newsletters.

## Website

### JASSO Website (portal)

➤ <https://www.jasso.go.jp/en/>

### Scholarship Programs for Japanese Students

#### ●Scholarship counseling site

➤ <https://www.shogakukinsupport.jp/> \*In Japanese Only.

#### ●Scholarship Funding simulator

➤ <https://shogakukin-simulator.jasso.go.jp/> \*In Japanese Only.

#### ●Scholarship Loan and Repayment Simulation

➤ <https://simulation.sas.jasso.go.jp/simulation/> \*In Japanese Only.

#### ●Scholar Net Personal

➤ <https://scholar-ps.sas.jasso.go.jp/> \*In Japanese Only.

### Support Programs for International Students

#### ●"Study in Japan" Official Website

➤ <https://www.studyinjapan.go.jp/en/>

#### ●Kaigairyugaku Joho Site (Information on Studying Abroad)

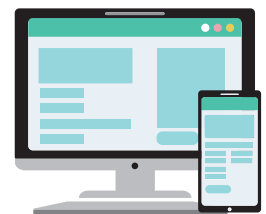
➤ <https://ryugaku.jasso.go.jp/> \*In Japanese Only.

#### ●Study in Japan Global Network Project

➤ <https://sjgn.jasso.go.jp/> \*In Japanese Only.

#### ●TOBITATE! Young Ambassador Program

➤ <https://tobitate.mext.go.jp/> \*In Japanese Only.



## SNS

### Twitter

➤ @JASSO\_general

### YouTube

➤ JASSO channel

➤ Study in Japan

➤ Study in Japan Fair Channel

➤ JASSO Study Abroad Channel

➤ TIEC & HIH channel

➤ TIEC & HIH channel2

➤ JASSO 海外留学支援事業

➤ JASSO 学生生活支援事業 channel

### Facebook

#### ●Student Exchange Department

➤ @jasso.studentexchange

#### ●Information Services Division, Student Exchange Department

➤ @Jasso StudyinJapan

#### ●Indonesia office

➤ @jasso.indonesia

#### ●Republic of Korea Office

➤ @JASSO.Korea

#### ●Japan Alumni Global Network

➤ @jasso.japanalumnglobalnetwork

#### ●Osaka Japanese Language Education Center

➤ @JASSO Osaka Japanese Language Education Center

#### ●Vietnam office

➤ @JASSO.Vietnam

#### ●Malaysia office

➤ @JASSO.Malaysia

#### ●Thailand office

➤ @JASSO.Thailand

### Instagram

#### ●Student Exchange Programs Planning Division, Student Exchange Department

➤ @tieg\_hih

#### ●Information Services Division, Student Exchange Department

➤ @Jasso\_study\_in\_Japan

#### ●Indonesia office

➤ @jasso.indonesia

#### ●Republic of Korea Office

➤ @jasso.korea



# Donations

Every year JASSO receives donations from those who have completed repaying their scholarships, volunteers and corporations that understand the importance of supporting students for donations. These are then used carefully for students who have suffered disasters, or intend to study abroad, and so on.

## Donation methods

In addition to donating online, where it is possible to do everything from application to "**Online payment**," donations can also be made via direct deposit. Furthermore, setting continuous donations such as a "**Monthly donation**" is possible to donate a fixed monthly amount via credit card.

For further details, please check ► [https://www.jasso.go.jp/kihukin/shien\\_kihu/index.html](https://www.jasso.go.jp/kihukin/shien_kihu/index.html)

## Benefits to donors

### ■ Tax incentives

Donations to JASSO allow for tax deductions for income tax, corporate tax, inheritance tax etc.

For example, we have "donation menu" that allows tax deductions on income tax and corporate tax. In addition, JASSO provides information and advice in cooperation with banks on dealing with bequest.

For further details, please check ► [https://www.jasso.go.jp/kihukin/shien\\_kihu/kihukin/tax\\_info.html](https://www.jasso.go.jp/kihukin/shien_kihu/kihukin/tax_info.html)

### ■ Medal with Dark Blue Ribbon

JASSO is certified by the Cabinet Office as a public service group that can award the Medal with Dark Blue Ribbon to individuals and corporations for their donations. Individuals can be considered for the award if they make a donation of 5 million yen or more; corporations and groups, 10 million yen or more. By applying in advance, you can still be considered even if it takes multiple payments to reach the required figures.

### ■ Others

A letter of appreciation signed by our president will be given to those who donate.

## Donation uses

### ● Support for continuing the education of studies affected by disaster (JASSO subventions)

We provide aid (100,000 yen per person) to students whose home or the home of the primary wage-earner of the students was more than half destroyed by disasters and are facing difficulty continuing their education.

### ● Support program for economic countermeasures to rising prices

In order to support students who are forced to live a difficult life due to the impact of rising prices caused by increases in natural resource prices triggered by depreciation of the yen and international circumstances, including the situation in Ukraine, we provide universities that offer support for food expenses as needed for student life and expenses for the consumable goods necessary for higher education (stationery products, educational materials, etc.) as a support program for economic countermeasures to rising prices with part of the expenses for operating the program (9/10) categorized as aid.

### ● Support for examination and other fees for students in orphanages

In order to prevent students who grew up under social care from dropping the idea of going to universities, etc., we provide aid (200,000 yen per person) to students who are enrolled in orphanages and who are expected to graduate from senior high school in March 2024 as a new program using donations.

### ● Japan Public-Private Partnership Student Study Abroad Program (TOBITATE! Young Ambassador Program)

JASSO offers scholarships and provides pre- and post-training in an effort to dispatch Japanese students abroad (Please refer to page 15).



## Contact for student support donations related inquiries

### ■ Student support donations

Public Relations Division, Foundation Office (Policy, Planning and External Relations Department)

10-7 Ichigayahonmura-cho, Shinjuku-ku, Tokyo 162-8412

TEL+81-3-6743-3185

\*The Ichigaya Office will be temporarily relocated to the place below for renovation in sequence starting in May 2023.

**Higashi-Ginza Office**

Nomura Real Estate Bldg., 6-18-2 Ginza, Chuo-ku, Tokyo

### ■ Inquiries on donations for Japan Public-Private Partnership Student Study Abroad Program (TOBITATE! Young Ambassador Program)

Private Finance Division, Global Human Resource Development Department

Public-Private Joint Initiative Headquarters for Overseas Education Promotion, 3-2-2 Kasumigaseki, Chiyoda-ku, Tokyo 100-8959

TEL+81-3-6734-4923

# Facility Guide

Located within Tokyo International Exchange Center, Plaza Heisei is a facility equipped for the functions of academic exchange, such as international conferences, lectures, academic meetings, and concerts. The location is often used for filming and online meetings.

## Conference facilities

- **International Conference Hall** **Floor Space:** 571m<sup>2</sup>/**Number of Seats:** maximum 479 (279 on the 1st floor, 200 on the 2nd floor)  
This facility can be used for a variety of purposes such as meetings, lectures, symposiums, and concerts; the chairs on the first floor can be stored and the space can be used for roundtable conferences.
- **Media Hall** **Floor Space:** 136m<sup>2</sup>/**Number of Seats:** maximum 102 (movable)  
This facility can be used for meetings, lectures, symposiums, concerts, poster sessions, etc.
- **Conference Rooms** Five Large and small rooms  
These rooms can be used for not only independent conferences, but division meetings of the International Conference Hall or the Media Hall.



Plaza Heisei



International Conference Hall

## Location

2-2-1 Aomi, Koto-ku, Tokyo 135-8630

## Inquiries

Tokyo International Exchange Center, Plaza Heisei Meeting Facilities Administration Office  
TEL +81-3-5564-3030



<https://www.jasso.go.jp/en>



<https://www.studyinjapan.go.jp/en/>

Edited and Published by:

**Japan Student Services Organization**  
**Public Relations Division**

**Policy, Planning and External Relations Department**

10-7 Ichigayahonmura-cho, Shinjuku-ku, Tokyo 162-8412

TEL +81-3-6743-6011

FAX +81-3-6743-6662

\*The Ichigaya Office will be temporarily relocated for renovation.

■**Higashi-Ginza Office**

Nomura Real Estate Bldg., 6-18-2 Ginza, Chuo-ku, Tokyo

**Catching Dreams - You!  
Supporting Hands - JASSO!**



Independent Administrative Institution  
**Japan Student Services  
Organization**