

## Outline of Results

### 2022 Examination for Japanese University Admission for International Students (1st Session)

#### Contents

1.	Guidelines for the 2022 Examination for Japanese University Admission for International Students (EJU)	1
2.	Examination Details	3
3.	List of Average Scores by Subject	7
4.	Score Distribution	8
5.	Cumulative Distribution of Scaled Score	12

Japan Student Services Organization (JASSO)

## Guidelines for the 2022 Examination for Japanese University Admission for International Students (EJU)

### 1. Purpose

This examination is used to evaluate the Japanese language proficiency and the basic academic abilities of international students who wish to study at the undergraduate level at universities or other such higher educational institutions in Japan.

### 2. Examination Administrator

The Japan Student Services Organization administers the examination with the cooperation of the Ministry of Education, Culture, Sports, Science and Technology, the Ministry of Foreign Affairs, Japanese universities, and affiliated institutions in Japan and overseas.

### 3. General Description of the Examination

- (1) Eligibility:  
International students who wish to study at the undergraduate level at universities or other such higher educational institutions in Japan.
- (2) Date of exam:  
1st Session June 19, 2022 (Sunday)  
2nd Session November 13, 2022 (Sunday)
- (3) Venues:  
Japan: Hokkaido, Miyagi, Gunma, Saitama, Chiba, Tokyo, Kanagawa, Ishikawa or Fukui, Shizuoka, Aichi, Kyoto, Osaka, Hyogo, Okayama or Hiroshima, Kochi, Fukuoka and Okinawa.  
Outside Japan: Hong Kong, India (New Delhi), Indonesia (Jakarta and Surabaya), Malaysia (Kuala Lumpur), Mongolia (Ulaanbaatar), Myanmar (Yangon), Philippines (Manila), Republic of Korea (Seoul and Busan), Russia (Vladivostok) (\*), Singapore, Sri Lanka (Colombo), Taiwan (Taipei), Thailand (Bangkok and Chiang Mai) and Vietnam (Hanoi and Ho Chi Minh City)  
\* Due to unavoidable circumstances, The 2022 EJU will not be administered in Vladivostok.
- (4) Subjects:  
Depending on the university they wish to enter and the course of study they wish to pursue, the examinees select the subject tests that they will take from the following.

Subject	Purpose	Length	Score Range
Japanese as a Foreign Language	Measurement of the Japanese language skills (academic Japanese) required for studying at Japanese universities.	125 minutes	Reading comprehension, Listening and Listening-reading comprehension 0-400
			Writing 0-50
Science	Measurement of the basic academic skills in science (Physics, Chemistry, and Biology) necessary for studying in a science department of Japanese universities.	80 minutes	0-200
Japan and the World	Measurement of the basic academic skills in liberal arts, particularly thinking and logical abilities, necessary for studying at Japanese universities.	80 minutes	0-200
Mathematics	Measurement of the basic academic skills in mathematics necessary for studying at Japanese universities.	80 minutes	0-200

#### [Remarks]

- a) The test in Japanese as a Foreign Language consists of writing, reading comprehension, and listening and listening-reading comprehension.
  - b) In the science test, examinees select two subjects from physics, chemistry and biology depending on the requirements of the University they wish to enter and the course of study they wish to pursue.
  - c) In the mathematics test, examinees select either of Course 1 if they plan to enter liberal arts programs or science programs requiring comparatively less knowledge of mathematics, or Course 2 if they plan to enter programs requiring advanced knowledge of mathematics depending on the requirements of the university they wish to enter and the course of study they wish to pursue.
  - d) Examinees may not choose to take both the Science test and the Japan and the World test.
  - e) The score ranges listed are not raw scores except the writing in Japanese as a Foreign Language; instead, they are based on a common scale. The writing is scored based on the standards.
  - f) Refer to the syllabuses for each subject.
- (5) Examination languages option:  
The EJU is available in Japanese or English, except for the Japanese as a Foreign Language test, which is given in Japanese only, applicants need to indicate their preference in the application depending on the requirements of the university they wish to enter and the course of study they wish to pursue.
- (6) Answering format:  
All questions use a multiple-choice format, except for the writing section of the Japanese as a Foreign Language test.



## Examination Details

### 1. Number of Applicants and Examinees by Site

Examination Site		Applicants	Examinees	
In Japan	Hokkaido	45	40	
	Tohoku	Miyagi	110	94
	Kanto	Gunma	32	27
		Saitama	309	277
		Chiba	241	216
		Tokyo	7,829	6,723
		Kanagawa	211	179
	Chubu	Ishikawa	6	6
		Shizuoka	88	77
		Aichi	142	126
	Kinki	Kyoto	781	708
		Osaka	1,047	918
		Hyogo	177	159
	Chugoku	Okayama	131	117
	Shikoku	Kochi	64	61
	Kyushu	Fukuoka	465	444
Okinawa		10	9	
Total in Japan		11,688	10,181	
Outside Japan	Hong Kong		1,398	294
	India	New Delhi	105	46
	Indonesia	Jakarta	144	108
		Surabaya	68	54
	Malaysia	Kuala Lumpur	182	151
	Mongolia	Ulaanbaatar	217	173
	Myanmar	Yangon	147	99
	Philippines	Manila	11	6
	Republic of Korea	Seoul	2,335	1,965
		Busan	491	424
	Russia	Vladivostok(*)	2	-
	Singapore		11	7
	Sri Lanka	Colombo	20	12
	Taiwan	Taipei	350	250
	Thailand	Bangkok	87	63
		Chiang Mai	11	11
	Vietnam	Hanoi	81	60
		Ho Chi Minh City	41	26
	Total outside Japan		5,701	3,749
Grand total		17,389	13,930	

\*Due to unavoidable circumstances, EJU testing planned in Vladivostok was canceled.

Note: The numbers of applicants and examinees who selected the English version of EJU are as follows.

	Applicants	Examinees
In Japan	132	110
Outside Japan	694	489
Total	826	599

Reference: JASSO has approved the following testing accommodations (special arrangements) for applicants requesting their use for reasons of disability, injury or other valid grounds.

Number of Applicants requesting Testing Accommodations: 8 (4 in Japan, 4 Overseas)

Description of Approved Testing Accommodations				Disability	Cases
Exam Time Extension	Japanese as a Foreign Language	Writing	30min→39 min. / +30%	Low vision Developmental disorders	3
		Reading	40min→52 min. / +30%	Low vision Developmental disorders	3
		Listening and Listening-Reading Comprehension	Total 55min→56 min. / extend the answering time	Low vision Developmental disorders	2
	Japan and the World		80min→104min. / +30%	Low vision Developmental disorders	3
	Mathematics		80min→104min. / +30%	Developmental disorders	1
Question Booklet and Question Method	Large-size question booklet (A3 size. / +40%)			Low vision	3
Answer Sheet and Answer Method	Large-size answer sheet writing method (A3 size. / +40%)			Low vision	3
Use of Visual Assistance	Magnifying glasses			Low vision	1
Use of Hearing Assistance	Hearing aids and Cochlear implant			Hard of hearing	2
	Headphone			Hard of hearing	1
Other	Testing in separate room			Hard of hearing Low vision Developmental disorders	4
	Seating position considerations			Low vision	2
	Telling notes with the document			Hard of hearing	1

\* Because some applicants qualify for a multiple number of testing accommodations, the numbers listed are the combined totals.

## 2. Examination Venues

### In Japan

Prefecture	Name of Examination Venue	Prefecture	Name of Examination Venue
Hokkaido	Otaru University of Commerce	Ishikawa	Kanazawa University
Miyagi	Hotel Mielparque Sendai	Shizuoka	University of Shizuoka, Junior College
Gunma	Takasaki Shirogane Building	Aichi	Nagoya University
Saitama	Josai University	Kyoto	Kyoto Prefectural University
Chiba	Chiba University		Kyoto Notre Dame University
Tokyo	Keio University		Kyoto Seika University
	Komazawa University	Osaka	Osaka Kyoiku University
	Nihon University, College of Humanities and Sciences	Hyogo	Kobe International Exhibition Hall
	Hosei University	Okayama	Okayama University
	Waseda University	Kochi	Kochi Kenritsu Seishonen Center
	Tokyo University of Agriculture and Technology	Fukuoka	Fukuoka Jo Gakuin Junior and Senior High School
	Hitotsubashi University	Okinawa	Okinawa Women's Junior College
Kanagawa	TKP Garden City Premium Yokohama Station Shintakashima		

### Outside Japan

Country and Region	City	Name of Examination Venue
Hong Kong		KITEC
		HKUSPACE (United Learning Centre)
India	New Delhi	Sri Venkateswara College, Delhi
Indonesia	Jakarta	Center for Japanese Studies Universitas Indonesia
	Surabaya	Language Center of Surabaya State University
Malaysia	Kuala Lumpur	Sunway University
Mongolia	Ulaanbaatar	Mongolia-Japan Center
		National University of Mongolia
Myanmar	Yangon	Brainworks Total International School
Philippines	Manila	De La Salle-College of Saint Benilde
Republic of Korea	Seoul	Gyeongwon Middle School
		Jamsil High School
		Yongsan High School
		Garak Middle School
		Guro High School
	Busan	Gyeongnam Technical High School
Russia	Vladivostok	*Due to unavoidable circumstances, EJU was canceled
Singapore		The Japanese Cultural Society, Singapore
Sri Lanka	Colombo	Sri Lanka Japan Cultural Centre (Sasakawa hall)
Taiwan	Taipei	The Language Training & Testing Center
		Dept. of Applied Mechanics, NTU
Thailand	Bangkok	Old Japan Students' Association, Thailand
	Chiang Mai	Chiang Mai University
Vietnam	Hanoi	Foreign Trade University (Vietnam-Japan Human Resources Cooperation Center)
	Ho Chi Minh City	University of Social Sciences & Humanities, VNUHCM

3. Number of Examinees by Nation/Region of Origin (in Japan)

Country / Region	Examinees	Country / Region	Examinees
China	8,402	Spain	2
Viet Nam	757	Syria	2
Republic of Korea	185	Tajikistan	2
Indonesia	152	U.A.E.	2
Hong Kong	104	Ukraine	2
Taiwan	96	Australia	1
Malaysia	86	Bahrain	1
Mongolia	62	Cambodia	1
Myanmar	49	Cameroon	1
Bangladesh	31	Colombia	1
Nepal	21	Congo [Kinshasa]	1
Sri Lanka	19	D.P.R.K	1
Thailand	18	Gabon	1
U.S.A.	15	Ghana	1
Brazil	7	Guinea	1
Uzbekistan	7	Kazakhstan	1
Germany	6	Kyrgyz Republic	1
India	6	Luxembourg	1
Russia	6	Madagascar	1
France	5	Nigeria	1
Pakistan	5	Norway	1
Peru	4	Rwanda	1
Philippines	4	Senegal	1
Canada	3	Switzerland	1
Iran	3	Others	75
Macau	3	Total 59 countries / regions	10,181
Morocco	3		
Singapore	3		
Turkey	3		
Afghanistan	2		
Argentina	2		
Egypt	2		
Italy	2		
Portugal	2		
Saudi Arabia	2		

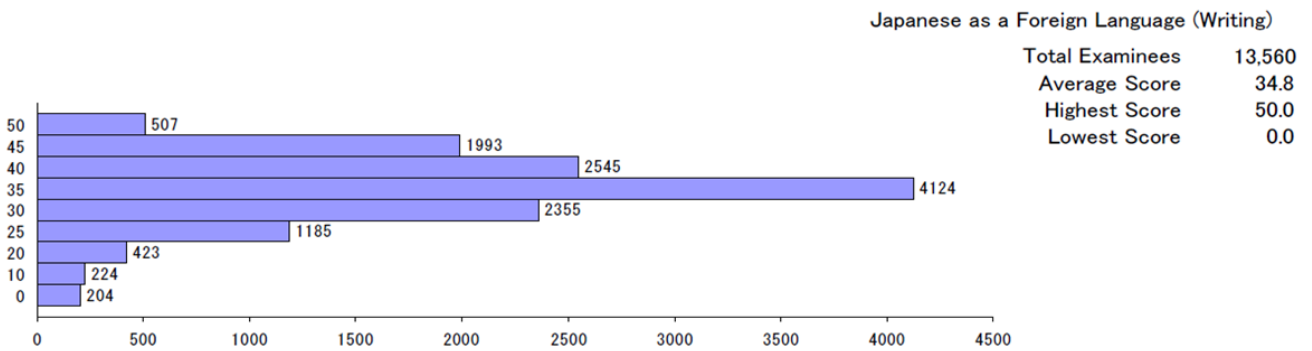
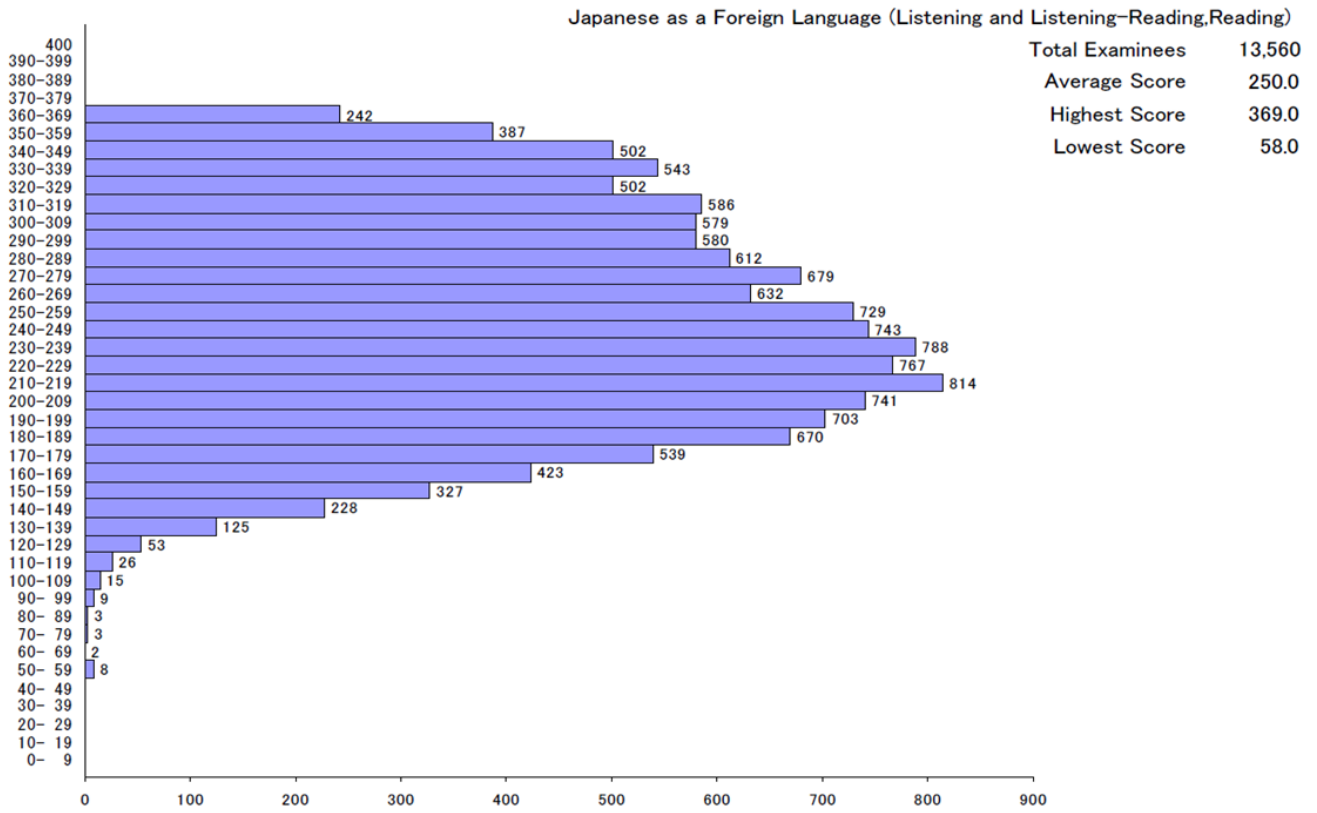
### List of Average Scores by Subject

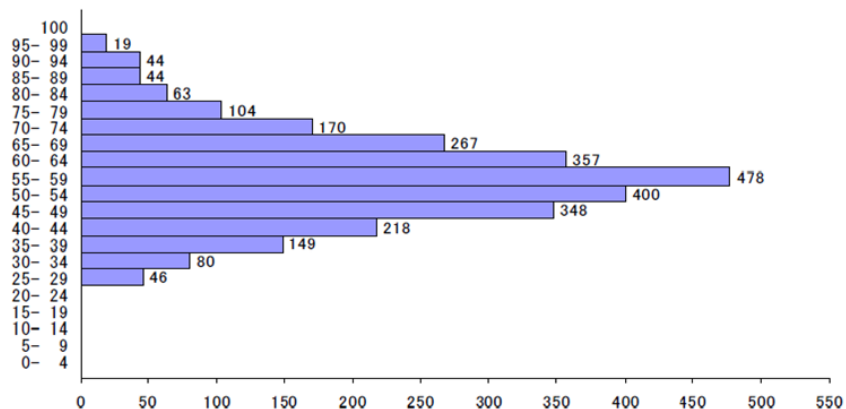
Subject (Score Range)		Examinees	Average Score	Highest Score	Lowest Score	Standard Dev.
Japanese as a Foreign Language	Listening and Listening- Reading (0-200)	13,560	108.5 (54.3%)	171 (85.5%)	29 (14.5%)	30.0 (15.0%)
	Reading (0-200)		141.5 (70.8%)	198 (99.0%)	29 (14.5%)	35.7 (17.9%)
	Total (0-400)		250.0 (62.5%)	369 (92.3%)	58 (14.5%)	60.2 (15.1%)
	Writing (0-50)		34.8 (69.6%)	50 (100.0%)	0 (0.0%)	8.8 (17.6%)
Science	Physics (0-100)	2,787	56.6 (56.6%)	96 (96.0%)	26 (26.0%)	13.7 (13.7%)
	Chemistry (0-100)	3,425	52.4 (52.4%)	97 (97.0%)	22 (22.0%)	14.9 (14.9%)
	Biology (0-100)	932	65.8 (65.8%)	92 (92.0%)	23 (23.0%)	14.7 (14.7%)
Japan and the World (0-200)		6,610	128.3 (64.2%)	198 (99.0%)	17 (8.5%)	33.8 (16.9%)
Mathematics	Course 1 (0-200)	5,358	97.6 (48.8%)	195 (97.5%)	32 (16.0%)	26.4 (13.2%)
	Course 2 (0-200)	3,315	107.0 (53.5%)	200 (100.0%)	49 (24.5%)	19.1 (9.6%)

Note: Percentages of Average Score, Highest Score, Lowest Score and Standard Dev. indicate the ratio to a perfect score.

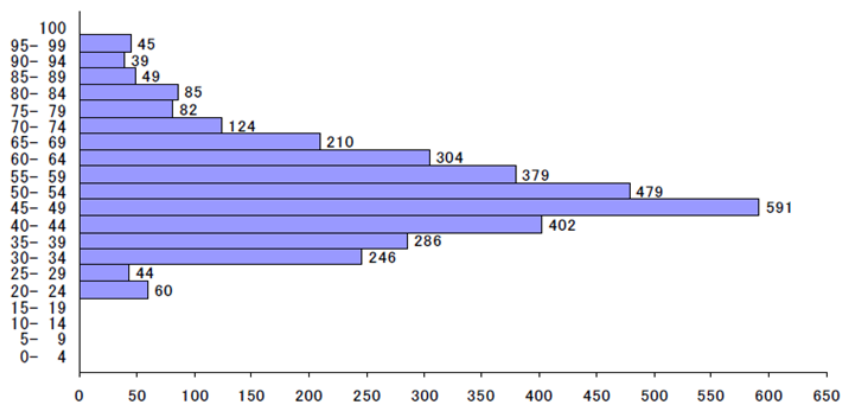


## Score Distribution

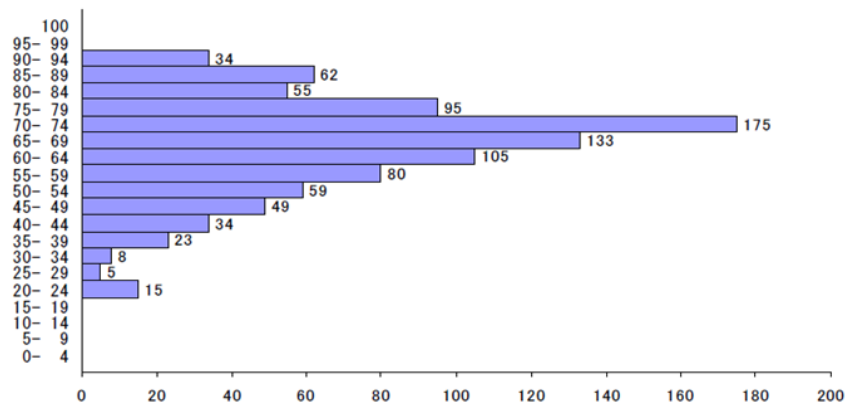




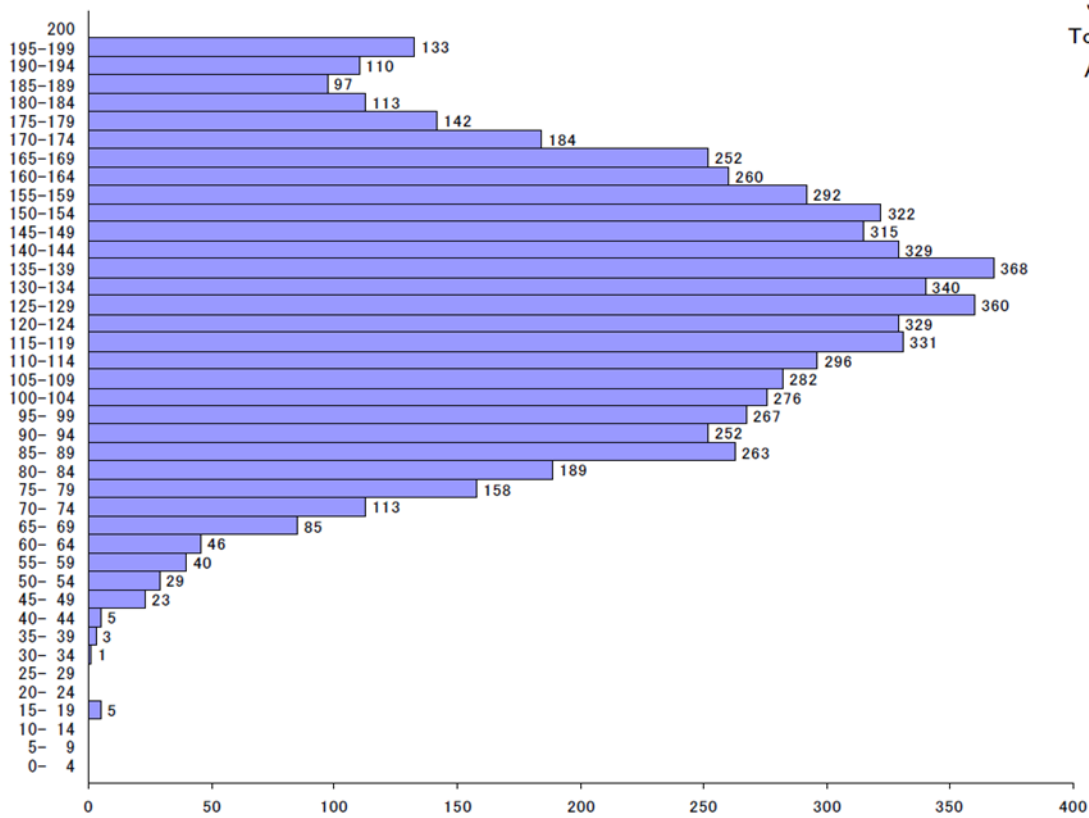
Physics  
 Total Examinees 2,787  
 Average Score 56.6  
 Highest Score 96.0  
 Lowest Score 26.0



Chemistry  
 Total Examinees 3,425  
 Average Score 52.4  
 Highest Score 97.0  
 Lowest Score 22.0

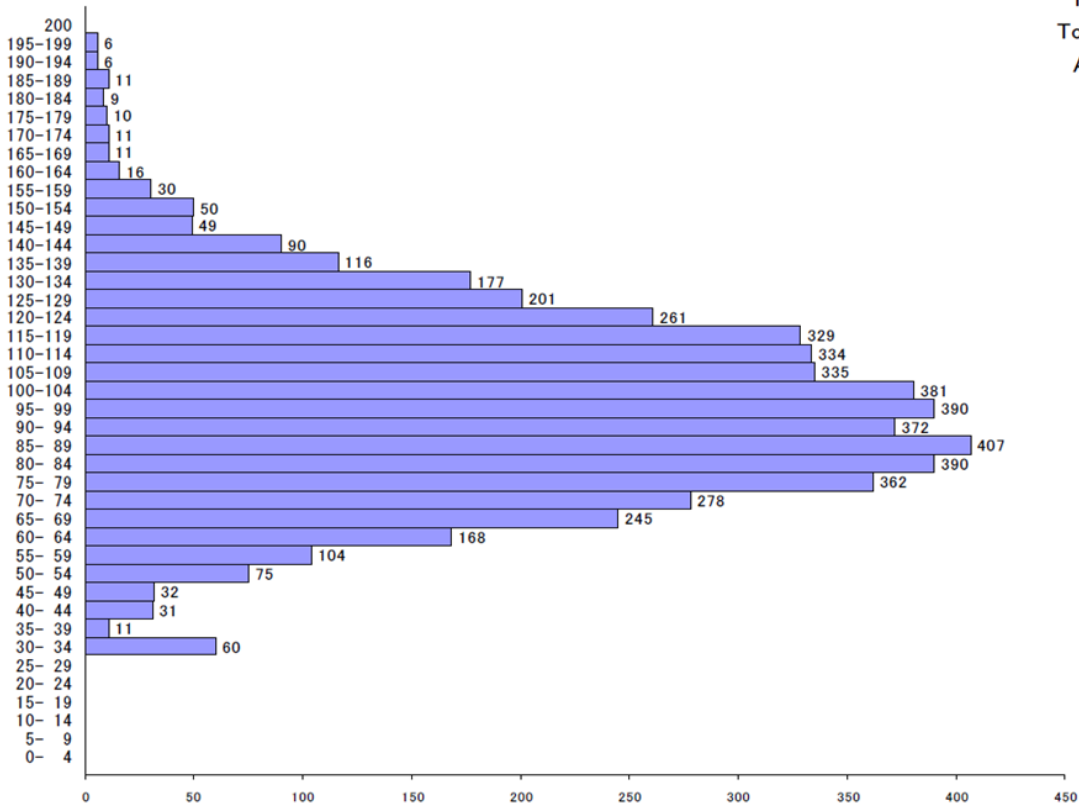


Biology  
 Total Examinees 932  
 Average Score 65.8  
 Highest Score 92.0  
 Lowest Score 23.0

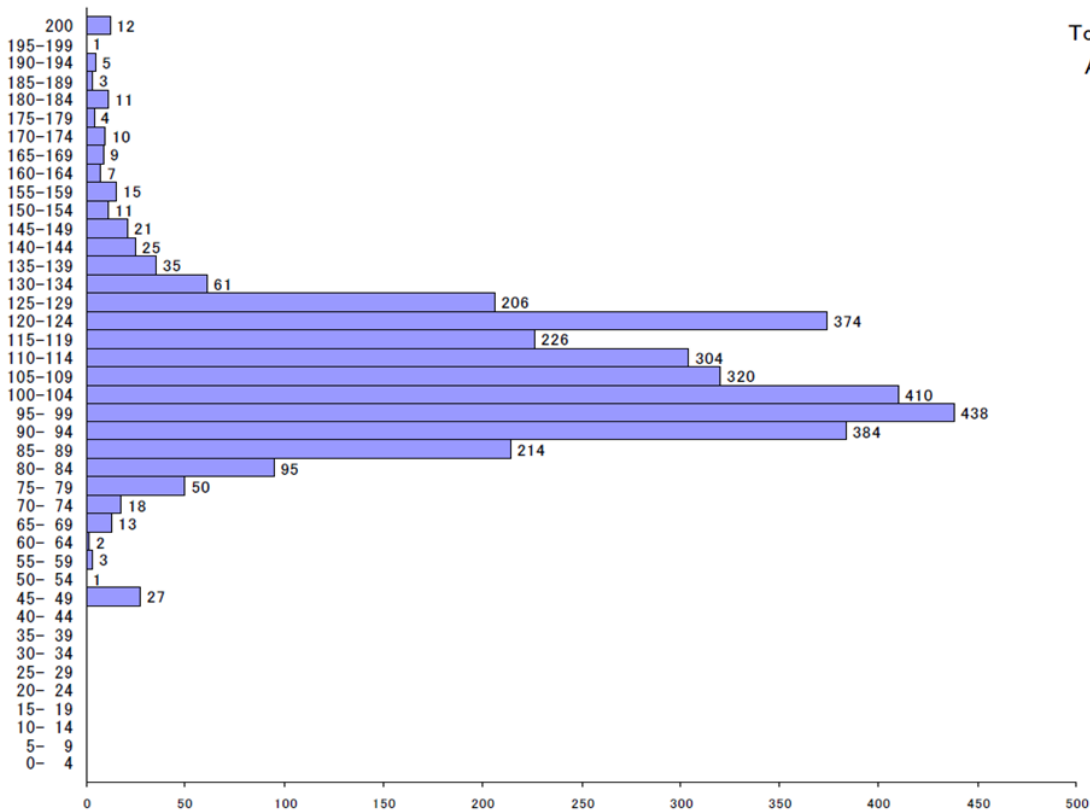


Japan and the World  
 Total Examinees 6,610  
 Average Score 128.3  
 Highest Score 198.0  
 Lowest Score 17.0

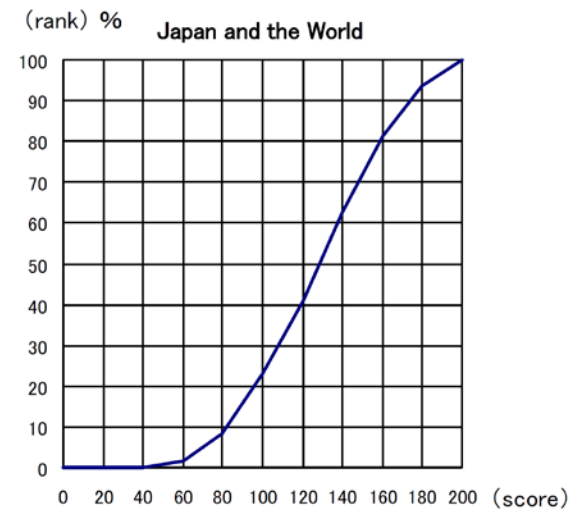
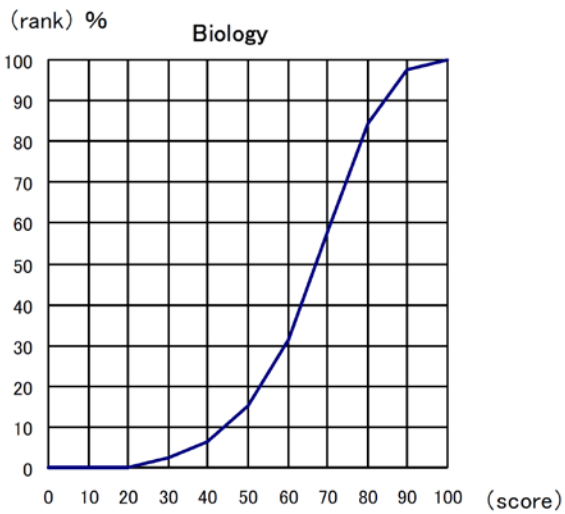
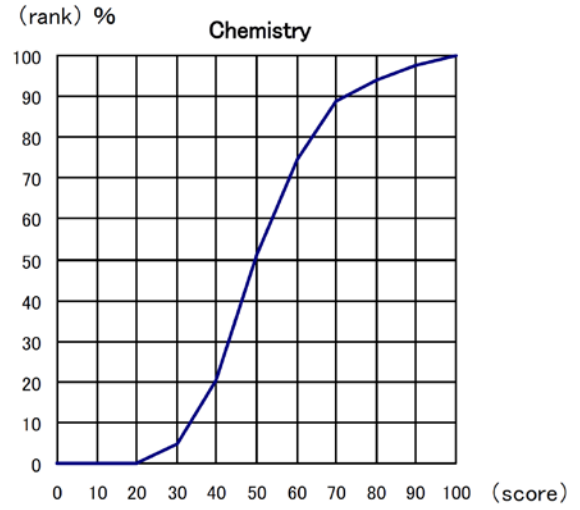
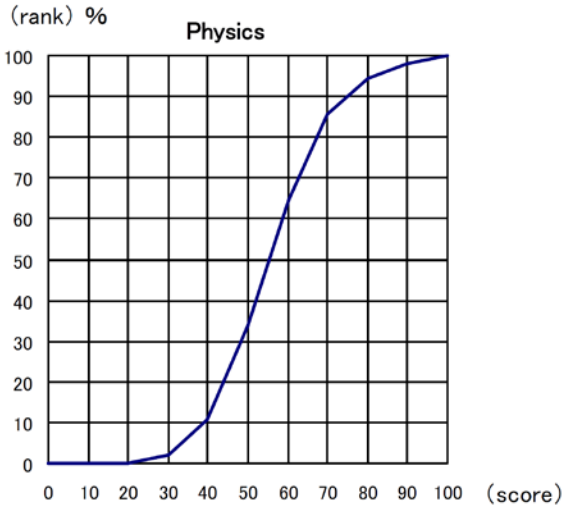
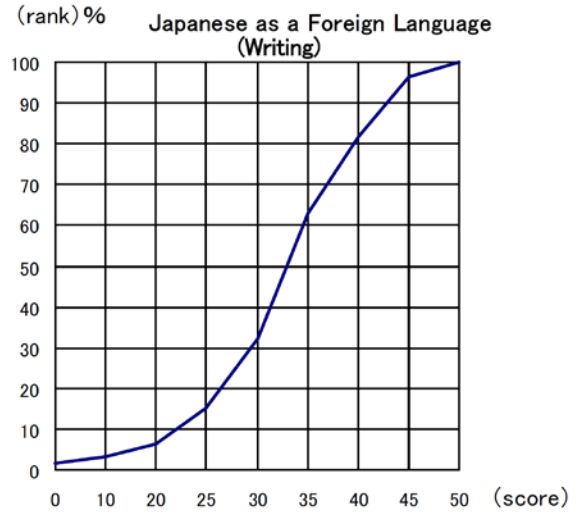
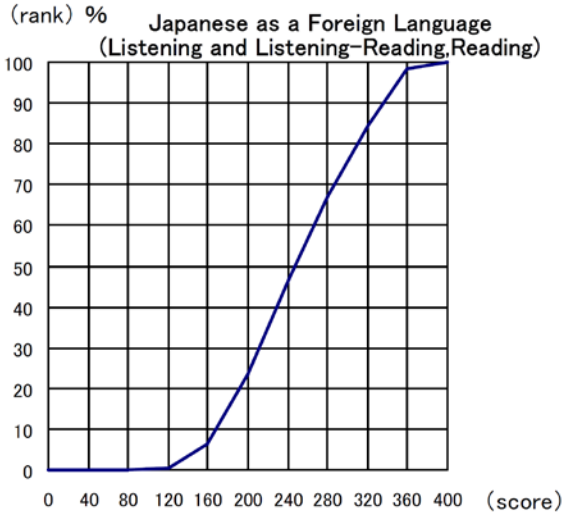
**Mathematics (Course 1)**  
 Total Examinees 5,358  
 Average Score 97.6  
 Highest Score 195.0  
 Lowest Score 32.0

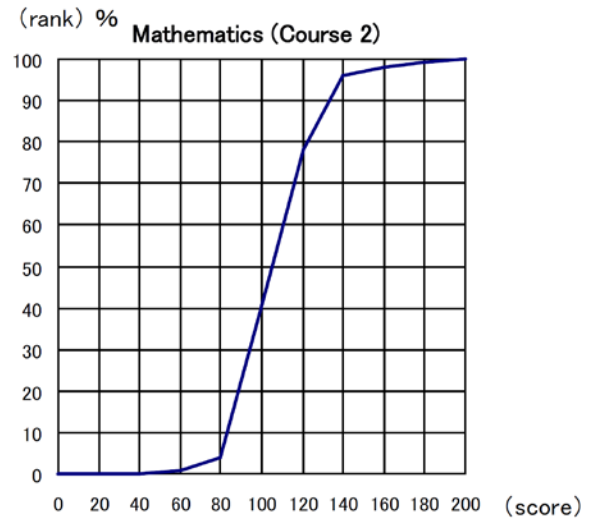
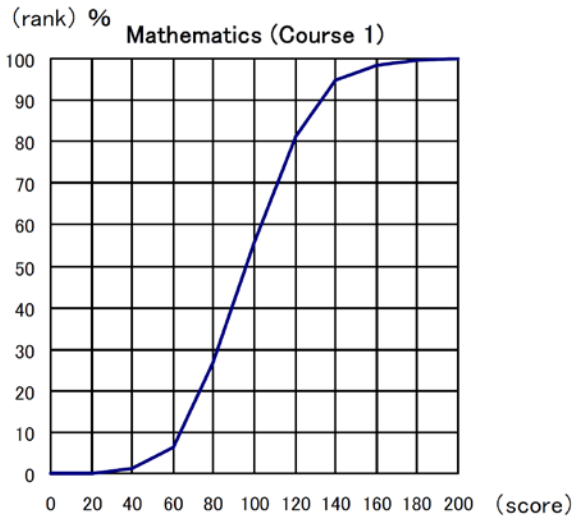


**Mathematics (Course 2)**  
 Total Examinees 3,315  
 Average Score 107.0  
 Highest Score 200.0  
 Lowest Score 49.0



## Cumulative Distribution of Scaled Score

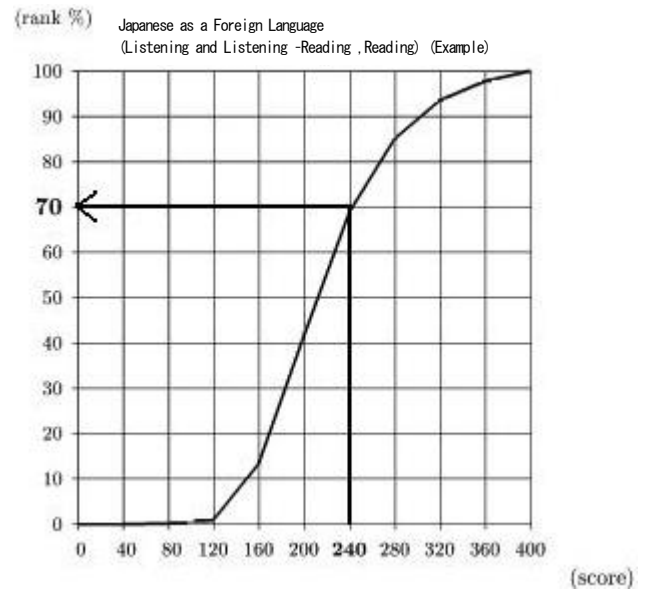




The cumulative distribution of the total score displayed above indicates at which position the score achieved by an examinee stands in the total rankings.

Taking the example of an examinee whose total score is 240 from the two fields of the test of Japanese as a Foreign Language, "240" on the horizontal axis corresponds to "70%" on the vertical axis (ranking). This means that the number of examinees who are below this examinee occupies 70 % of the total examinees. Therefore, the percentile rank of this examinee is "70".

The percentile ranking allows you to relatively compare your score, i.e. showing the position of the examinee in the entire group who took the examination.



Japan Student Services Organization  
Student Exchange Department,  
Testing Division

4-5-29 Komaba, Meguro-ku, Tokyo 153-8503 Japan

Telephone: 03-6407-7457 Fax: 03-6407-7462

E-mail: [jasso\\_eju@jasso.go.jp](mailto:jasso_eju@jasso.go.jp)