

Outline of Results

2023 Examination for Japanese University Admission for International Students (2nd Session)

Contents

1.	Guidelines for the 2023 Examination for Japanese University Admission for International Students (EJU)	1
2.	Examination Details	3
3.	List of Average Scores by Subject	7
4.	Score Distribution	8
5.	Cumulative Distribution of Scaled Score	12

Japan Student Services Organization (JASSO)

Guidelines for the 2023 Examination for Japanese University Admission for International Students (EJU)

1. Purpose

This examination is used to evaluate the Japanese language proficiency and the basic academic abilities of international students who wish to study at the undergraduate level at universities or other such higher educational institutions in Japan.

2. Examination Administrator

The Japan Student Services Organization administers the examination with the cooperation of the Ministry of Education, Culture, Sports, Science and Technology, the Ministry of Foreign Affairs, Japanese universities, and affiliated institutions in Japan and overseas.

3. General Description of the Examination

- (1) Eligibility: International students who wish to study at the undergraduate level at universities or other such higher educational institutions in Japan.
- (2) Date of exam:
 - 1st Session June 18, 2023 (Sunday)
 - 2nd Session November 12, 2023 (Sunday)
- (3) Venues:
 - Japan: Hokkaido, Miyagi, Gunma, Saitama, Chiba, Tokyo, Kanagawa, Ishikawa or Toyama, Shizuoka, Aichi, Kyoto, Osaka, Hyogo, Okayama or Hiroshima, Kochi, Fukuoka and Okinawa.
 - Outside Japan: Hong Kong, India (New Delhi), Indonesia (Jakarta and Surabaya), Malaysia (Kuala Lumpur), Mongolia (Ulaanbaatar), Myanmar (Yangon), Philippines (Manila), Republic of Korea (Seoul and Busan), Singapore, Sri Lanka (Colombo), Taiwan (Taipei), Thailand (Bangkok and Chiang Mai) and Vietnam (Hanoi and Ho Chi Minh City)
 - *The 2023 EJU in Russia (Vladivostok) was canceled.
- (4) Subjects: Depending on the university they wish to enter and the course of study they wish to pursue, the examinees select the subject tests that they will take from the following.

Subject	Purpose	Length	Score Range
Japanese as a Foreign Language	Measurement of the Japanese language skills (academic Japanese) required for studying at Japanese universities.	125 minutes	Reading comprehension, Listening and Listening-reading comprehension 0-400
			Writing 0-50
Science	Measurement of the basic academic skills in science (Physics, Chemistry, and Biology) necessary for studying in a science department of Japanese universities.	80 minutes	0-200
Japan and the World	Measurement of the basic academic skills in liberal arts, particularly thinking and logical abilities, necessary for studying at Japanese universities.	80 minutes	0-200
Mathematics	Measurement of the basic academic skills in mathematics necessary for studying at Japanese universities.	80 minutes	0-200

[Remarks]

- a) The test in Japanese as a Foreign Language consists of writing, reading comprehension, and listening and listening-reading comprehension.
 - b) In the science test, examinees select two subjects from physics, chemistry and biology depending on the requirements of the university they wish to enter and the course of study they wish to pursue.
 - c) In the mathematics test, examinees select either of Course 1 if they plan to enter liberal arts programs or science programs requiring comparatively less knowledge of mathematics, or Course 2 if they plan to enter programs requiring advanced knowledge of mathematics depending on the requirements of the university they wish to enter and the course of study they wish to pursue.
 - d) Examinees may not choose to take both the Science test and the Japan and the World test.
 - e) The score ranges listed are not raw scores except the writing in Japanese as a Foreign Language; instead, they are based on a common scale. The writing is scored based on the standards.
 - f) Refer to the syllabuses for each subject.
- (5) Examination languages option:
The EJU is available in Japanese or English, except for the Japanese as a Foreign Language test, which is given in Japanese only, applicants need to indicate their preference in the application depending on the requirements of the university they wish to enter and the course of study they wish to pursue.
- (6) Answering format:
All questions use a multiple-choice format, except for the writing section of the Japanese as a Foreign Language test.

Examination Details

1. Number of Applicants and Examinees by Site

Examination Site		Applicants	Examinees	
In Japan	Hokkaido	79	60	
	Tohoku	Miyagi	121	89
	Kanto	Gunma	57	50
		Saitama	388	306
		Chiba	359	268
		Tokyo	13,951	10,857
	Chubu	Kanagawa	363	267
		Toyama	13	9
		Shizuoka	111	96
	Kinki	Aichi	309	251
		Kyoto	1,037	864
		Osaka	1,757	1,435
	Hyogo	321	248	
	Chugoku	Hiroshima	194	160
	Shikoku	Kochi	48	42
	Kyushu	Fukuoka	727	639
Okinawa		17	17	
Total in Japan		19,852	15,658	
Outside Japan	Hong Kong		767	644
	India	New Delhi	153	76
	Indonesia	Jakarta	190	146
		Surabaya	50	36
	Malaysia	Kuala Lumpur	134	126
	Mongolia	Ulaanbaatar	189	148
	Myanmar	Yangon	166	113
	Philippines	Manila	17	14
	Republic of Korea	Seoul	2,488	1,939
		Busan	513	409
	Russia	Vladivostok(*)	-	-
	Singapore		10	9
	Sri Lanka	Colombo	7	3
	Taiwan	Taipei	258	213
	Thailand	Bangkok	76	49
		Chiang Mai	12	9
	Vietnam	Hanoi	116	102
		Ho Chi Minh City	52	38
	Total outside Japan		5,198	4,074
Grand total		25,050	19,732	

*Due to unavoidable circumstances, EJU testing planned in Vladivostok was canceled.

Note: The numbers of applicants and examinees who selected the English version of EJU are as follows.

	Applicants	Examinees
In Japan	434	324
Outside Japan	690	451
Total	1,124	775

Reference: JASSO has approved the following testing accommodations (special arrangements) for applicants requesting their use for reasons of disability, injury or other valid grounds.

Number of applicants authorized for testing accommodations: 17 (13 in Japan, 4 Overseas)

Description of Approved Testing Accommodations				Disability	Cases
Exam Time Extension	Japanese as a Foreign Language	Writing	30min→39 min. / +30%	Low vision Physical disability Developmental disorders	4
		Reading comprehension	40min→52 min. / +30%	Low vision Developmental disorders	3
		Listening and Listening-reading comprehension	Total 55min→56 min. / extend the answering time	Low vision Developmental disorders	3
	Science	80min→104min. / +30%	Developmental disorders	1	
	Japan and the World	80min→104min. / +30%	Low vision Developmental disorders	2	
	Mathematics	80min→104min. / +30%	Low vision Developmental disorders	3	
Question Booklet and Question Method	Large-size question booklet (A3 size. / +40%)		Low vision Developmental disorders	2	
Answer Sheet and Answer Method	Large-size answer sheet writing method (A3 size. / +40%)		Low vision Developmental disorders	2	
	Write to the question booklet		Developmental disorders	1	
	Respond by writing letters on answer sheets		Developmental disorders	1	
Use of Visual Assistance	Magnifying glass		Low vision Physical disability	2	
Use of Hearing Assistance	Hearing aid		Hard of hearing	4	
	Earphone or headphone		Hard of hearing	2	
Partial Test Exemption	Listening and Listening-Reading comprehension sections exempted		Hard of hearing	1	
Other	Testing in separate room		Low vision Physical disability Hard of hearing Developmental disorders Others	13	
	Seating position considerations		Low vision Hard of hearing Developmental disorders	5	
	Telling notes with document		Developmental disorders	1	
	Use of earplugs		Developmental disorders	1	

* Because some applicants qualify for a multiple number of testing accommodations, the numbers listed are the combined totals.

2. Examination Venues

In Japan

Prefecture	Name of Examination Venue	Prefecture	Name of Examination Venue
Hokkaido	Sapporo University	Toyama	Toyama Prefectural University
Miyagi	Tohoku University	Shizuoka	Shizuoka University
Gunma	Takasaki Shirogane Building	Aichi	Nagoya University
Saitama	Saitama University	Kyoto	Kyoto Sangyo University
Chiba	Chiba University		Ryukoku University
Tokyo	Rikkyo University	Osaka	Osaka University
	Senshu University	Hyogo	Kwansei Gakuin University
	Sophia University	Hiroshima	Prefectural University of Hiroshima
	Takushoku University	Kochi	Kochi Kenritsu Seishonen Center
	The University of Tokyo, College of Arts and Sciences	Fukuoka	Kyushu Sangyo University
	Chuo University	Okinawa	University of the Ryukyus
	Hitotsubashi University		
	Soka University		
	The University of Electro-Communications		
Kanagawa	TKP Garden City Premium Minatomirai		

Outside Japan

Country and Region	City	Name of Examination Venue
Hong Kong		KITEC
India	New Delhi	Sri Venkateswara College, Delhi
Indonesia	Jakarta	Center for Japanese Studies Universitas Indonesia
	Surabaya	Language Center of Surabaya State University
Malaysia	Kuala Lumpur	Sunway University
Mongolia	Ulaanbaatar	Mongolia-Japan Center
		National University of Mongolia
Myanmar	Yangon	Yangon University of Education
Philippines	Manila	De La Salle-College of Saint Benilde
Republic of Korea	Seoul	Suseo Middle School
		Gawon Middle School
		Jamsil High School
		Hanyang Technical High School
		Ogeum Middle School
	Busan	Gyeongnam Technical High School
Russia	Vladivostok	* Due to unavoidable circumstances, EJU was canceled
Singapore		The Japanese Cultural Society, Singapore
Sri Lanka	Colombo	Sri Lanka Japan Cultural Centre (Sasakawa hall)
Taiwan	Taipei	The Language Training & Testing Center
Thailand	Bangkok	Old Japan Students' Association, Thailand
	Chiang Mai	Chiang Mai University
Vietnam	Hanoi	Foreign Trade University (Vietnam - Japan Institute for Human Resources Development)
	Ho Chi Minh City	University of Social Sciences & Humanities, VNUHCM

3. Number of Examinees by Nation/Region of Origin (in Japan)

Country / Region	Examinees	Country / Region	Examinees
China	12,542	Netherlands	3
Viet Nam	661	Spain	3
Myanmar	387	Syria	3
Nepal	292	Afghanistan	2
Republic of Korea	251	Belgium	2
Taiwan	229	Peru	2
Indonesia	199	Qatar	2
Mongolia	176	Sweden	2
Hong Kong	167	Cameroon	1
Malaysia	147	Chile	1
Bangladesh	85	Cote d'Ivoire	1
Sri Lanka	74	Dominica	1
Thailand	42	Egypt	1
U.S.A.	34	Estonia	1
Uzbekistan	33	Finland	1
Russia	30	French Polynesia	1
Ukraine	19	Hungary	1
France	11	Ireland	1
Turkey	11	Laos	1
Brazil	10	Madagascar	1
India	8	New Zealand	1
Argentina	7	Nigeria	1
Iran	7	Oman	1
Macao	7	Puerto Rico	1
Pakistan	7	Sao Tome and Principe	1
Philippines	7	Serbia	1
U.K.	6	Sudan	1
Canada	5	Switzerland	1
Germany	5	Tajikistan	1
Kazakhstan	5	Timor-Leste	1
Saudi Arabia	5	Trinidad and Tobago	1
Singapore	5	Tunisia	1
Cambodia	4	U.A.E.	1
Colombia	4	Others	115
Italy	4	Total 72 countries / regions	15,658
Mexico	4		
Australia	3		
Israel	3		
Kyrgyz Republic	3		

List of Average Scores by Subject

Subject (Perfect Score of Score Range)		Examinees	Average Score	Highest Score	Lowest Score	Standard Dev.
Japanese as a Foreign Language	Listening and Listening- Reading (200)	19,217	106.0 (53.0%)	176 (88.0%)	29 (14.5%)	29.9 (15.0%)
	Reading (200)		136.1 (68.1%)	198 (99.0%)	26 (13.0%)	37.6 (18.8%)
	Total (400)		242.1 (60.5%)	374 (93.5%)	55 (13.8%)	62.7 (15.7%)
	Writing (50)		34.7 (69.4%)	50 (100.0%)	0 (0.0%)	9.2 (18.4%)
Science	Physics (100)	4,089	54.6 (54.6%)	93 (93.0%)	21 (21.0%)	14.4 (14.4%)
	Chemistry (100)	4,885	53.8 (53.8%)	97 (97.0%)	20 (20.0%)	15.9 (15.9%)
	Biology (100)	1,398	67.3 (67.3%)	92 (92.0%)	17 (17.0%)	14.8 (14.8%)
Japan and the World (200)		8,912	122.6 (61.3%)	198 (99.0%)	15 (7.5%)	33.5 (16.8%)
Mathematics	Course 1 (200)	6,842	97.1 (48.6%)	195 (97.5%)	35 (17.5%)	27.3 (13.7%)
	Course 2 (200)	4,921	109.6 (54.8%)	200 (100.0%)	43 (21.5%)	22.4 (11.2%)

Note: Score Range starts from 0.

Percentages of Average Score, Highest Score, Lowest Score and Standard Dev. indicate the ratio to a Perfect Score of Score Range .

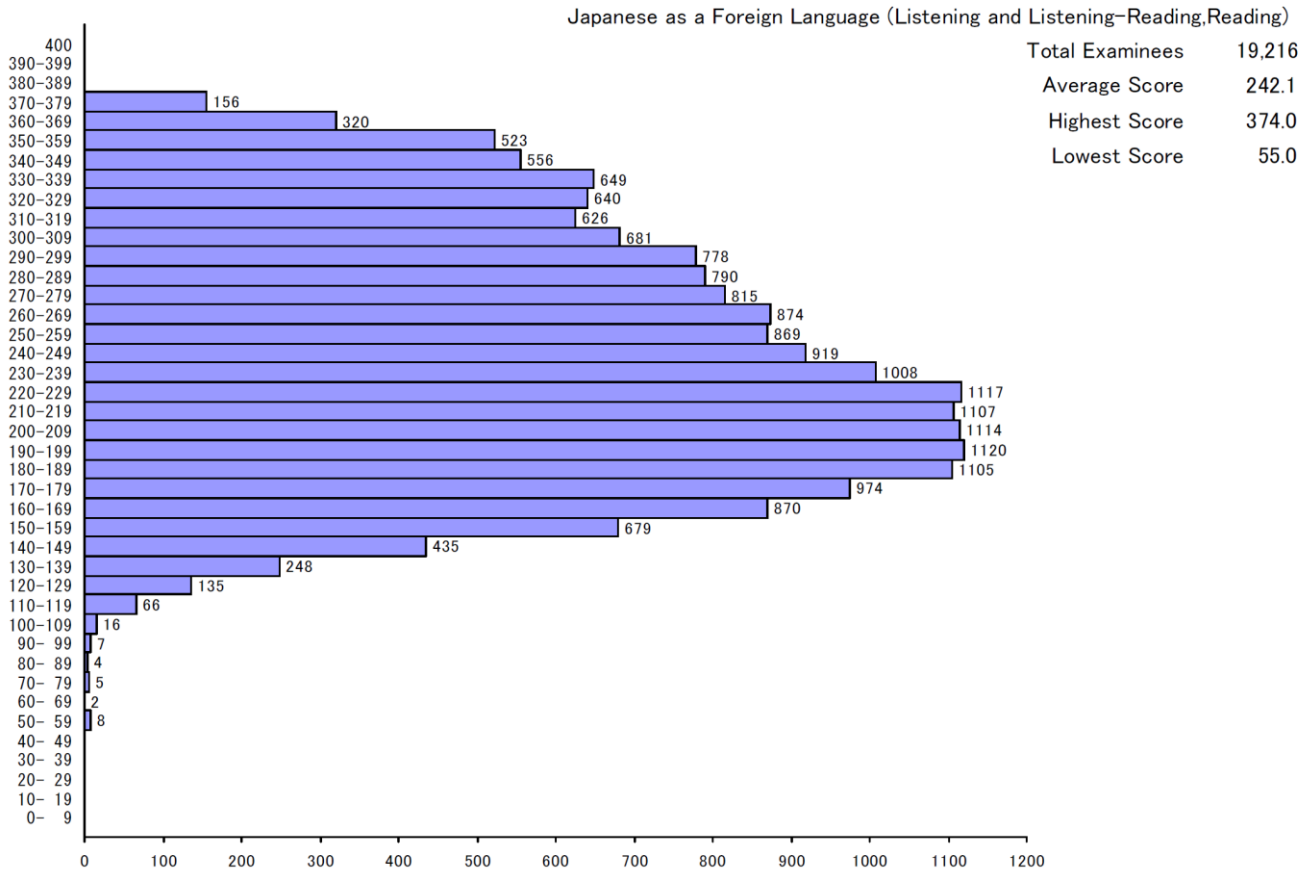
【Score】

<https://www.jasso.go.jp/en/ryugaku/eju/about/score/index.html>

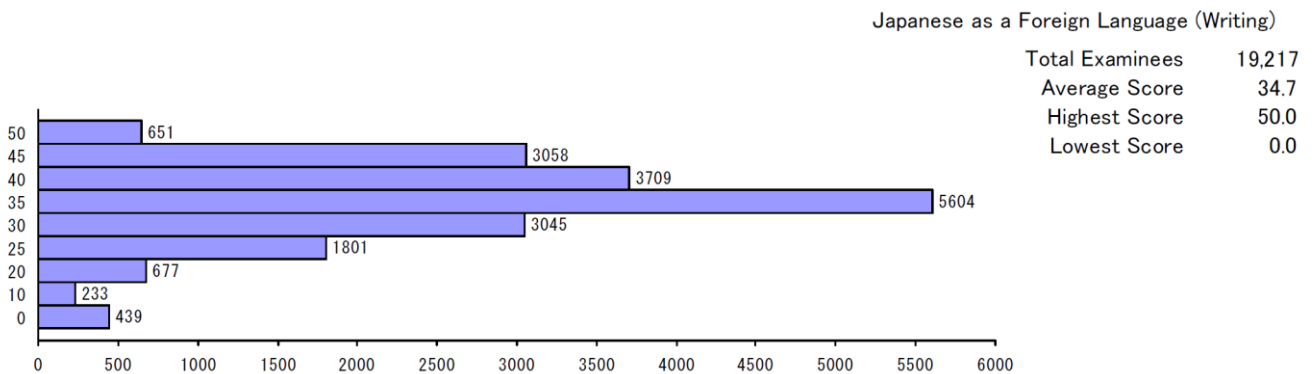
The number of examinees taking the Japanese as a Foreign Language test includes those exempted from a section of the test (“Listening and Listening-Reading comprehension,” “Reading comprehension” or “Writing”) due to authorization of testing accommodations.

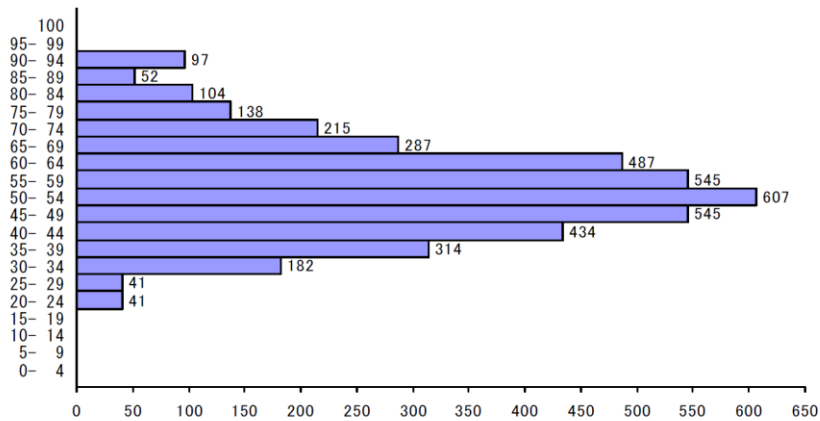
The “Average Score,” “Highest Score,” “Lowest Score” and “Standard Dev.” figures for the “Listening and Listening-Reading comprehension,” “Reading comprehension” and “Writing” sections of the Japanese as a Foreign Language test have been computed from the scores of the examinees actually taking the exam in each of those sections. The “Total” for the Japanese as a Foreign Language test has been computed for examinees actually taking both the “Listening and Listening-Reading comprehension” and “Reading comprehension” sections of the test, and does not include those exempted from any section of the tests due to testing accommodations.

Score Distribution

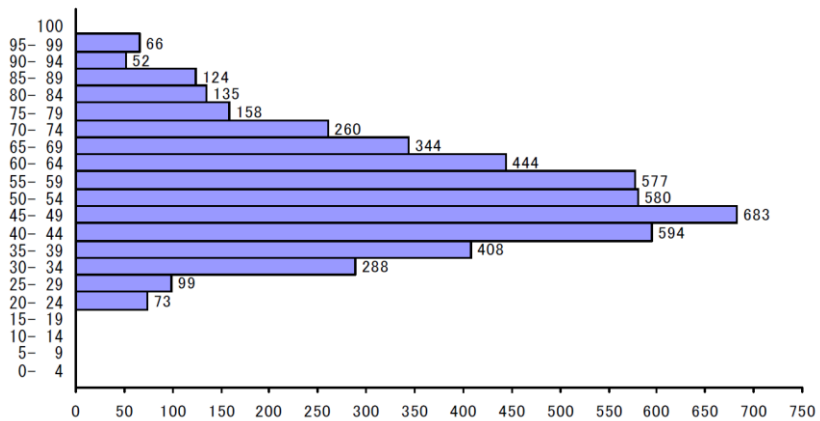


Note: The graph above presents the numbers of examinees taking the “Listening and Listening-Reading comprehension” and “Reading comprehension” tests, and does not include those exempted from any section of the tests due to testing accommodations.

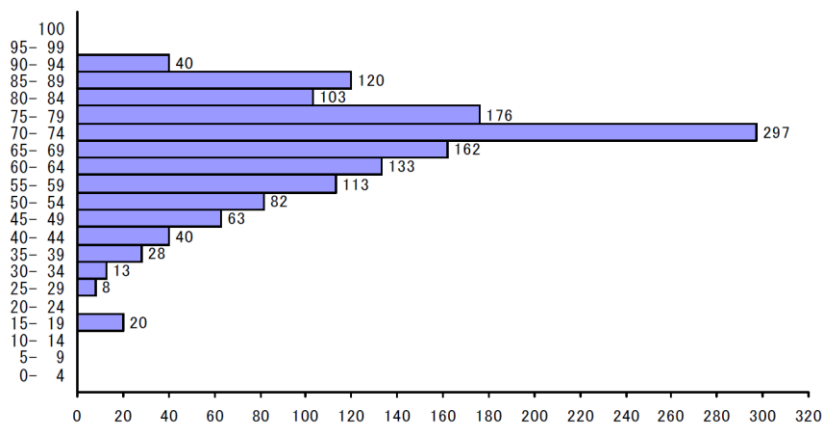




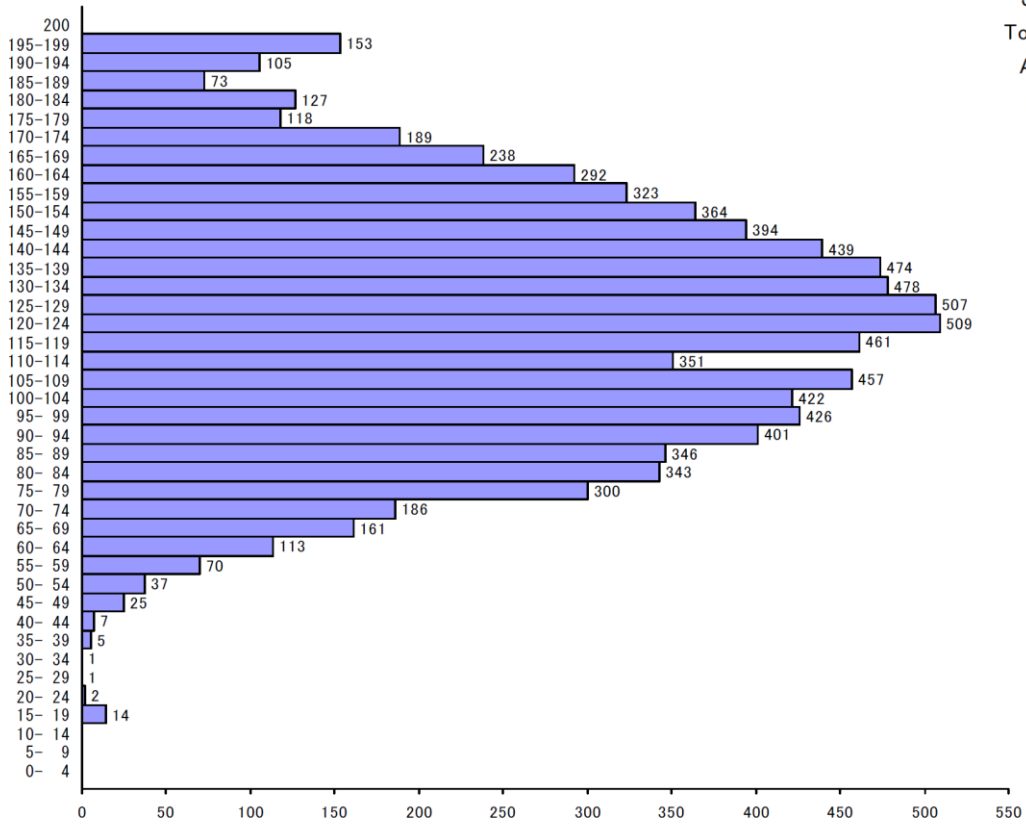
Physics
 Total Examinees 4,089
 Average Score 54.6
 Highest Score 93.0
 Lowest Score 21.0



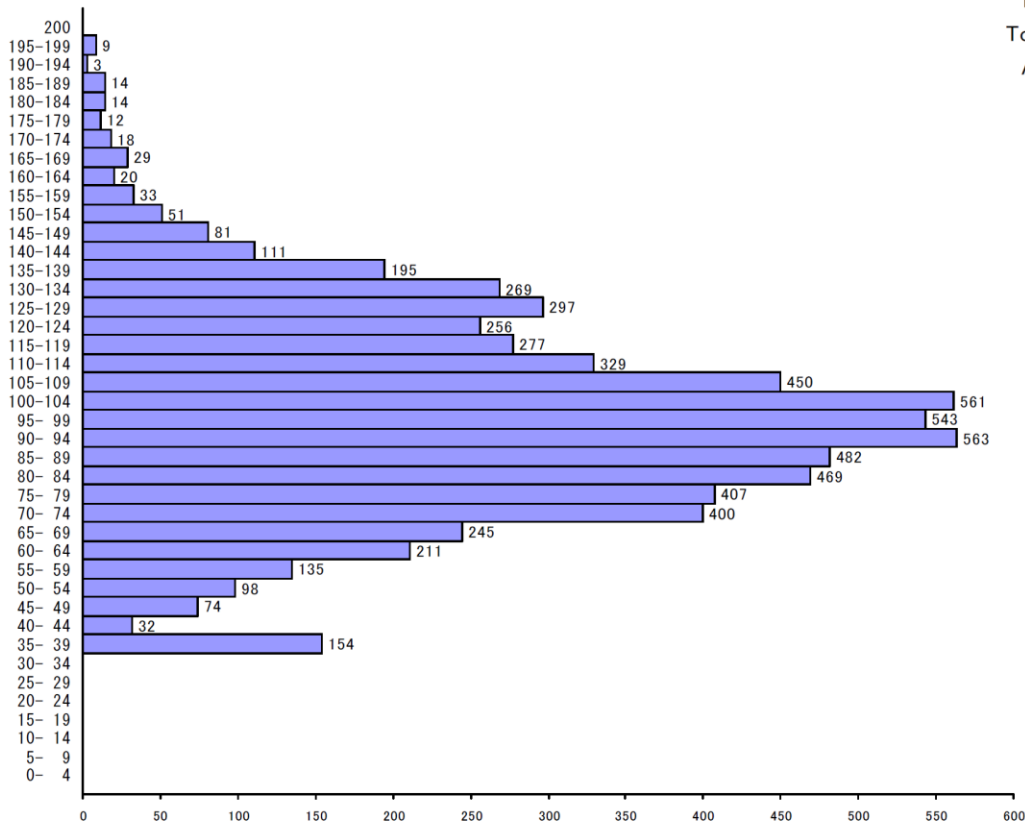
Chemistry
 Total Examinees 4,885
 Average Score 53.8
 Highest Score 97.0
 Lowest Score 20.0



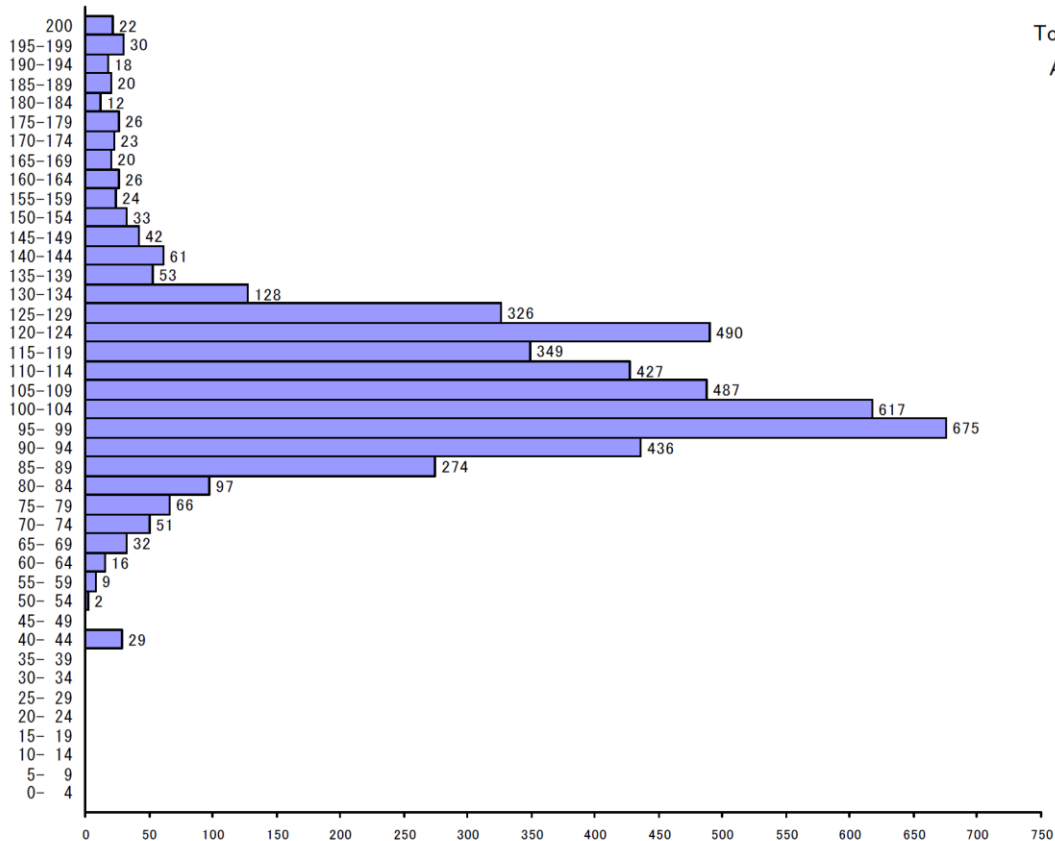
Biology
 Total Examinees 1,398
 Average Score 67.3
 Highest Score 92.0
 Lowest Score 17.0



Japan and the World
 Total Examinees 8,912
 Average Score 122.6
 Highest Score 198.0
 Lowest Score 15.0



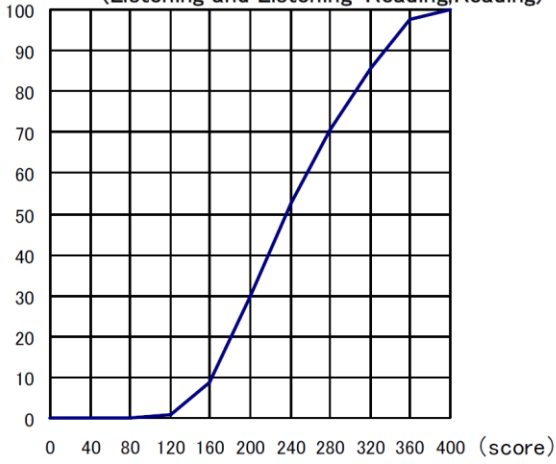
Mathematics (Course 1)
 Total Examinees 6,842
 Average Score 97.1
 Highest Score 195.0
 Lowest Score 35.0



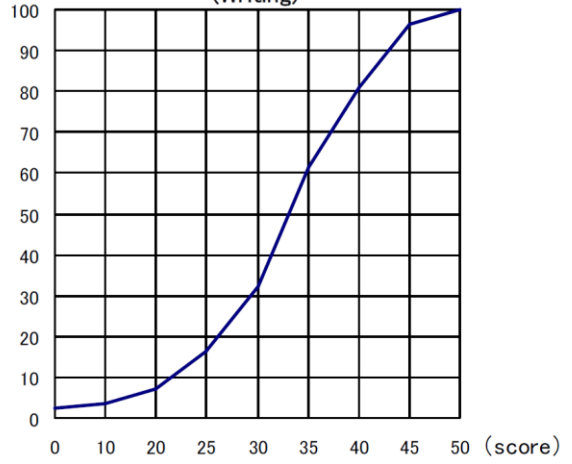
Mathematics (Course 2)
 Total Examinees 4,921
 Average Score 109.6
 Highest Score 200.0
 Lowest Score 43.0

Cumulative Distribution of Scaled Score

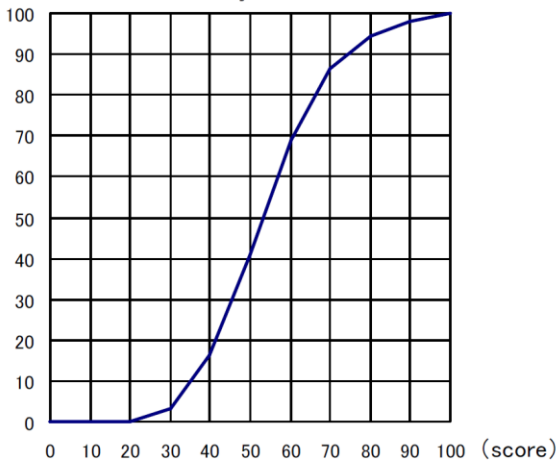
(rank) % Japanese as a Foreign Language
(Listening and Listening-Reading, Reading)



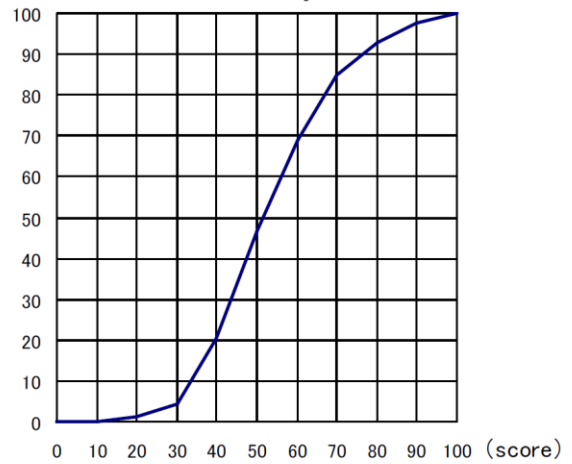
(rank) % Japanese as a Foreign Language
(Writing)



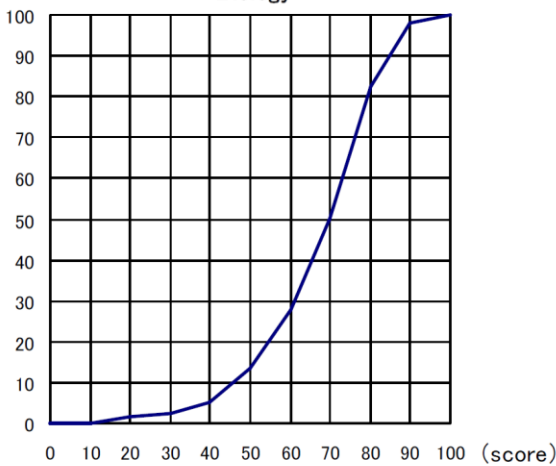
(rank) % Physics



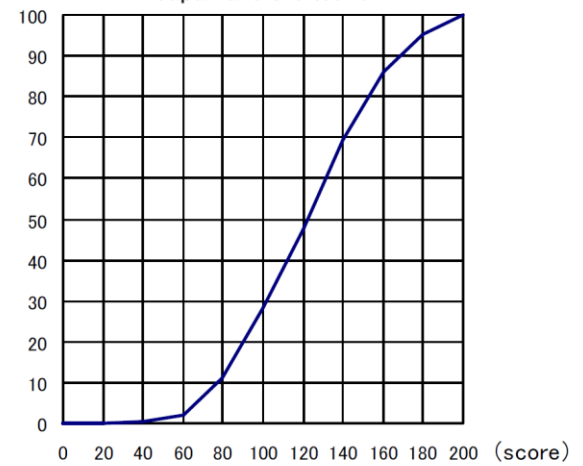
(rank) % Chemistry

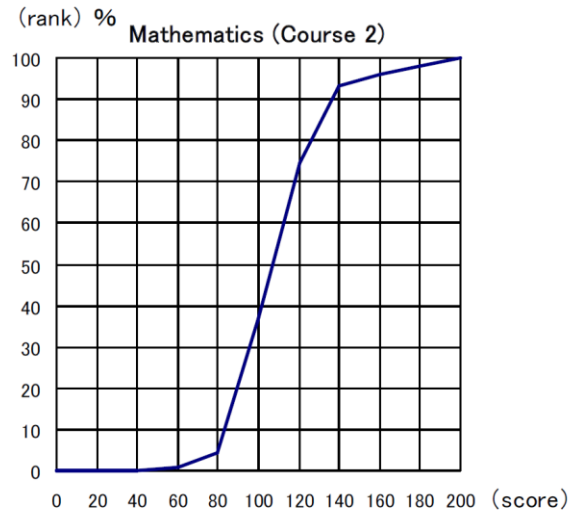
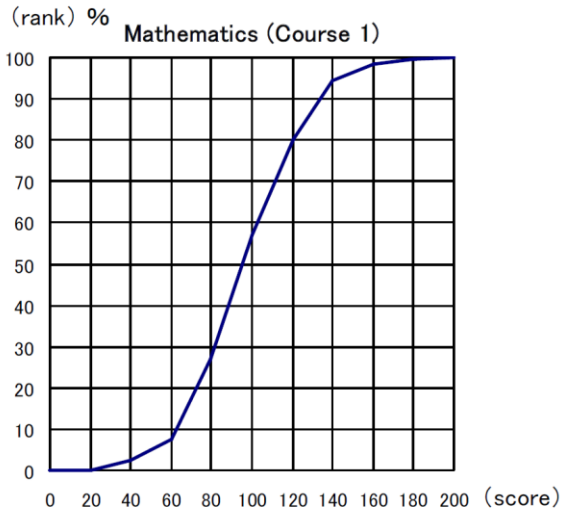


(rank) % Biology



(rank) % Japan and the World

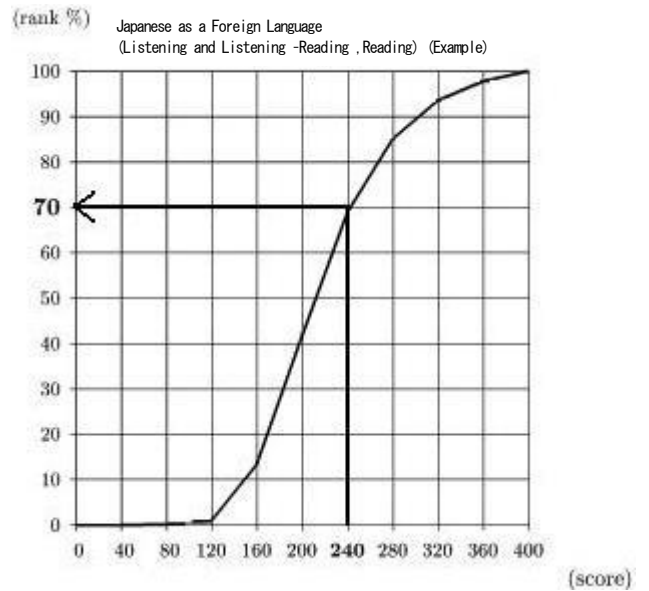




The cumulative distribution of the total score displayed above indicates at which position the score achieved by an examinee stands in the total rankings.

Taking the example of an examinee whose total score is 240 from the two fields of the test of Japanese as a Foreign Language, "240" on the horizontal axis corresponds to "70%" on the vertical axis (ranking). This means that the number of examinees who are below this examinee occupies 70 % of the total examinees. Therefore, the percentile rank of this examinee is "70".

The percentile ranking allows you to relatively compare your score, i.e. showing the position of the examinee in the entire group who took the examination.



Japan Student Services Organization
Student Exchange Department,
Testing Division

4-5-29 Komaba, Meguro-ku, Tokyo 153-8503 Japan

Telephone: 03-6407-7457 Fax: 03-6407-7462

E-mail: jasso_eju@jasso.go.jp