

2015 Examination for Japanese University Admission
for International Students

Japan and the World

(80 min.)

I Rules of Examination

1. Do not leave the room without the proctor's permission.
2. Do not take this question booklet out of the room.

II Rules and Information Concerning the Question Booklet

1. Do not open this question booklet until instructed.
2. After instruction, write your name and examination registration number in the space provided below, as printed on your examination voucher.
3. This question booklet has 22 pages.
4. If your question booklet is missing any pages, raise your hand.
5. You may write notes and calculations in the question booklet.

III Rules and Information Concerning the Answer Sheet

1. You must mark your answers on the answer sheet with an HB pencil.
2. Each question is identified by one of the row numbers **1**, **2**, **3**, ...
Follow the instruction in the question and completely fill in your answer in the corresponding row of the answer sheet (mark-sheet).
3. Make sure also to read the instructions on the answer sheet.

※ Once you are instructed to start the examination, fill in your examination registration number and name.

Examination registration number			*				*						
Name													

Q1 Read the following conversation and answer questions (1)-(4) below.

Yoshiko: In September 2014, 1 Scotland held a 2 referendum to decide whether it should become an independent country, right?

Teacher: That's right. Approximately 55% of the votes were cast against independence, so the proposal for independence was rejected. However, there was such a strong 3 separatist movement in Scotland that some opinion polls held before the referendum showed that separatists outnumbered those against independence.

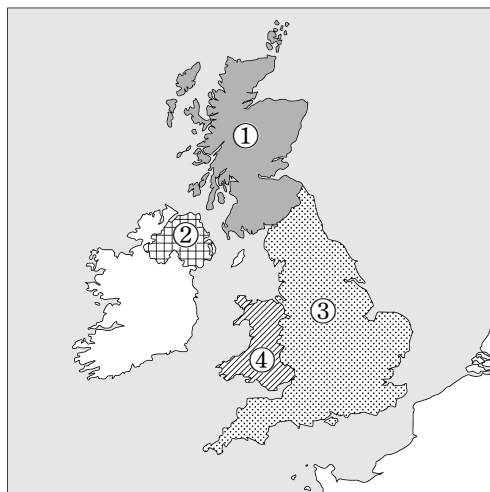
Yoshiko: Scotland once was an independent country, wasn't it?

Teacher: Yes, it was, but in 1707 it was de facto annexed to England.

Yoshiko: I've heard that the separatist movement was influenced by not only the historical background, but also issues concerning the 4 economy and industry, as well as currency.

Teacher: That's right. The movement has been shaped by various factors.

(1) With reference to underlined item 1, from ①-④ on the map below choose the answer that correctly indicates the location of Scotland. 1



Japan and the World—2

- (2) With reference to underlined item **2**, from ①-④ below choose the combination of terms that best fills blanks and in the following paragraph. **2**

In Japan, referendums constitute a form of at the local government level. One example of this is the system, whereby, according to the Local Autonomy Law, voters can demand that an elected official of the local government be removed from office by gathering a certain number of signatures.

	a	b
①	direct democracy	recall
②	indirect democracy	recall
③	direct democracy	initiative
④	indirect democracy	initiative

- (3) With reference to underlined item **3**, from ①-④ below choose the combination indicating a country that, like the UK, has a separatist movement within it, and the name of the region where that movement is taking place. **3**

	Country	Region
①	France	Flanders
②	Canada	Quebec
③	Portugal	Basque
④	Austria	Catalonia

Japan and the World—4

Q2 Read the following conversation and answer questions (1)-(4) below.

Yoshiko: You talked about globalization in today's lecture, right?

Teacher: Yes, and I also talked about globalization and the market-oriented thinking behind it that is called “1, neoliberalism.” In recent years, large amounts of capital have been moving across 2, national borders, and this is one aspect of globalization.

Yoshiko: What sort of effects does that have?

Teacher: Well, various governments have been adopting 3, policies to attract foreign businesses and capital to their countries. In some cases, these policies have a negative impact on the livelihood of local workers, and this can affect 4, fundamental social rights.

- (1) With reference to underlined item 1, from ①-④ below choose the combination of names that fills blanks [a] and [b] in the following paragraph. 5

The UK's [a] government, which came into power at the end of the 1970s, implemented various policies founded on neoliberalism. Similar reforms were also carried out in Japan in the 1980s by the [b] government, one of which was the privatization of Japanese National Railways.

	a	b
①	Tony Blair	Yasuhiro Nakasone
②	Tony Blair	Junichiro Koizumi
③	Margaret Thatcher	Yasuhiro Nakasone
④	Margaret Thatcher	Junichiro Koizumi

- (2) With reference to underlined item **2**, national borders are classified as natural borders, which are defined by rivers, mountain ranges, and other natural features, or as artificial borders, which are defined based on latitude or longitude. From ①–④ below choose the combination indicating a mountain range that serves as a natural national border, and the two countries it separates.

6

	Mountain range	Countries
①	Ural Mountains	Russia / Finland
②	Pyrenees	France / Spain
③	Andes	Brazil / Argentina
④	Appalachian Mountains	USA / Canada

- (3) With reference to underlined item **3**, from ①–④ below choose the answer that best indicates an example of such policies.

7

- ① Tightening restrictions on harmful emissions
- ② Lowering corporation taxes
- ③ Enhancing welfare programs for elderly people
- ④ Restricting the inflow of foreign workers

- (4) With reference to underlined item **4**, from ①–④ below choose the answer that indicates the world's first constitution to codify fundamental social rights.

8

- ① French Constitution of 1791
- ② Constitution of Japan
- ③ Constitution of the United States
- ④ Weimar Constitution

Japan and the World—6

Q3 From ①–④ below choose the statement that best describes the economic thought advocated by the economist mentioned. 9

- ① Adam Smith demanded that the government should implement production adjustment programs and thereby raise production prices.
- ② Milton Friedman promoted the idea of the welfare state and called for tighter regulation and “big government.”
- ③ Joseph Schumpeter held that innovation is the driving force of economic dynamism.
- ④ Thomas Robert Malthus pointed out the fundamental contradictions of capitalism, such as the exploitation of laborers by capitalists and the inevitability of economic crisis.

Q4 From ①–④ below choose the statement that best describes the market mechanism or supply and demand. 10

- ① When there is excess supply in a market, the price falls toward the equilibrium price.
- ② When a price is artificially kept above the equilibrium price, excess demand results.
- ③ When household income rises, the demand curve always shifts to the left.
- ④ When businesses succeed in lowering their production costs through innovation, the supply curve always shifts to the left.

Q5 From ①-④ below choose the combination of terms that best fills blanks and in the following paragraph concerning Japan's economy in the 1980s. **11**

The Japanese yen rapidly appreciated following the signing of the Plaza Accord. As a result, Japan decreased and the country's economy went into recession. In response, the Bank of Japan implemented measures aimed at reviving the economy, such as gradually the discount rate. This led to the start of the economic boom that later came to be called the "Bubble Economy."

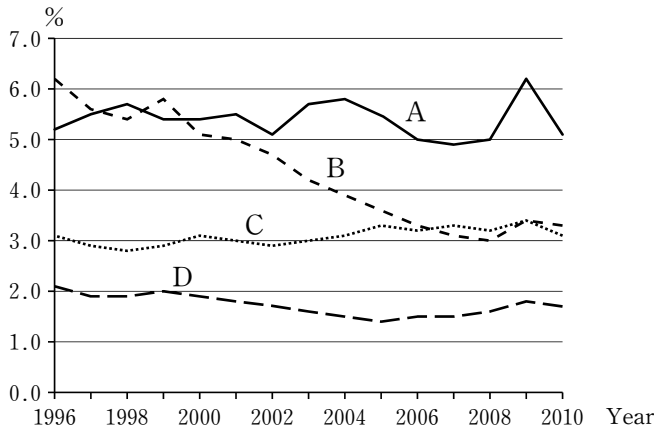
	a	b
①	imports to	raising
②	imports to	lowering
③	exports from	raising
④	exports from	lowering

Q6 From ①-④ below choose the statement that best describes Japan's banking system. **12**

- ① The Bank of Japan takes deposits from not only commercial banks, but also large businesses.
- ② Commercial banks use the money deposited in them not only to make loans, but also to buy and sell government bonds and stocks.
- ③ Some of the banknotes in circulation in Japan are issued by commercial banks as well as by the Bank of Japan.
- ④ Most deficit-covering government bonds are directly purchased by the Bank of Japan, which then sells them to commercial banks.

Japan and the World—8

Q7 The following graph shows trends in the ratio of public investment to GDP for Japan, France, Germany, and South Korea. Which of A-D in the graph represents Japan? From ①-④ below choose the correct answer. **13**



Source: *White Paper on Land, Infrastructure, Transport and Tourism in Japan, 2013*

- ① A
- ② B
- ③ C
- ④ D

Q8 From ①-④ below choose the statement that best describes joint-stock companies and shareholders. **14**

- ① The board of directors is the highest decision-making organ of a joint-stock company.
- ② Shareholders bear unlimited liability for debts incurred by the company whose stock they own.
- ③ A joint-stock company must pay dividends to its shareholders, even when the company is operating at a loss.
- ④ Shareholders' voting power at general shareholders' meetings is, in principle, commensurate with the number of shares they own.

Japan and the World—10

Q11 From ①-④ below choose the combination of terms that best fills blanks - in the following paragraph. **17**

In 1963, Japan became a GATT Article XI country, and in the following year, Japan shifted to being an IMF Article VIII country. Being a GATT Article XI country meant that it could no longer impose restrictions in order to protect its balance of payments from deteriorating, and being an IMF Article VIII country meant being a country which could not impose restrictions. Moreover, in 1964, Japan became a member of the and took steps to open markets to foreign investment.

	a	b	c
①	import	currency exchange	OECD
②	currency exchange	import	OECD
③	import	currency exchange	UN
④	currency exchange	import	UN

GATT: General Agreement on Tariffs and Trade

IMF: International Monetary Fund

OECD: Organisation for Economic Co-operation and Development

UN: United Nations

Q12 From ①-④ below choose the statement that is true of the G20. **18**

- ① The G20 held its first meeting near the end of the 1970s, in the wake of the two Oil Crises that occurred in that decade.
- ② The G20 does not include the members of the G8.
- ③ The G20 includes the five BRICS countries.
- ④ The G20's mission is to promote international coordination and collaboration to deal with global warming.

Q13 The following table lists the percentage of the total population made up by people aged 65 and above for Japan, South Korea, the USA, France, and China in past years and the forecasts for future years. From ①-④ below choose the combination that identifies the countries represented by A-D in the table.

19

Unit: %

Year	A	B	C	D	China
1950	4.9	8.3	11.4	2.9	4.5
1960	5.7	9.2	11.6	3.7	4.0
1970	7.1	9.8	12.9	3.3	4.0
1980	9.1	11.3	13.9	3.9	5.2
1990	12.0	12.5	14.0	5.0	5.9
2000	17.3	12.4	16.1	7.3	7.0
2010	22.8	13.1	16.8	11.1	8.2
2020	29.1	16.2	20.3	15.7	12.0
2030	31.6	19.9	23.1	23.3	16.5
2040	36.1	20.9	24.9	29.6	23.3
2050	38.8	21.2	24.9	32.8	25.6
2060	39.9	21.9	25.0	33.6	29.5

estimation ↓

Source: *White Paper on Land, Infrastructure, Transport and Tourism in Japan, 2011*

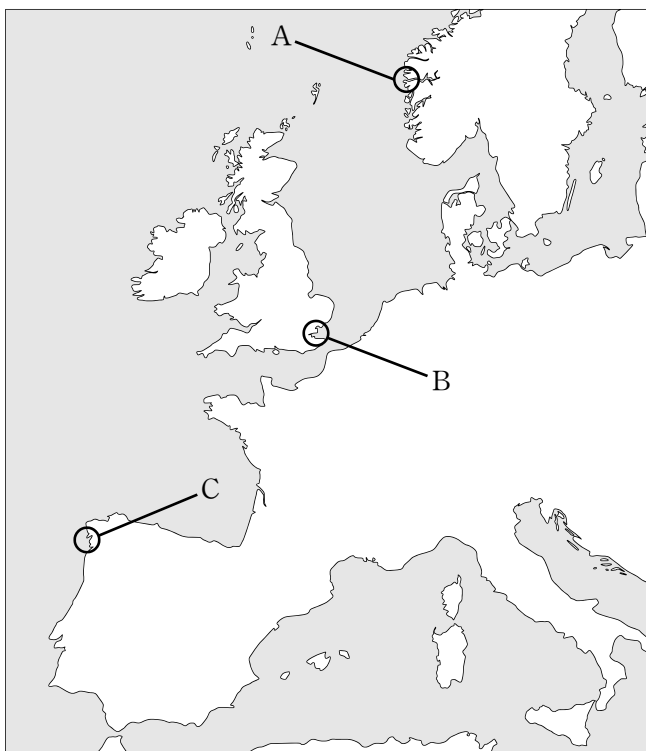
	A	B	C	D
①	Japan	USA	France	South Korea
②	South Korea	USA	Japan	France
③	Japan	France	South Korea	USA
④	South Korea	Japan	USA	France

Japan and the World—12

Q14 Japan Standard Time is based on a time zone centered on longitude 135° east. What is the time difference between Japan and the longitude that is directly opposite longitude 135° east? From ①-④ below choose the answer that best indicates the difference in hours compared with the time in Japan. Do not consider the effect of daylight saving time. **20**

- ① 9 hours ahead
- ② 9 hours behind
- ③ 12 hours ahead
- ④ 12 hours behind

Q16 Areas A-C on the map below represent distinctive types of coastal landforms found in Europe. From ①-④ below choose the combination that indicates the name of each landform. **22**



	A	B	C
①	estuary	fjord	ria coast
②	ria coast	estuary	fjord
③	fjord	estuary	ria coast
④	fjord	ria coast	estuary

- Q17** The USA extended its territory from the Atlantic side to the Pacific side after independence. From ①–④ below choose the combination that indicates a US state facing the Pacific and a state facing the Atlantic. **23**

	Pacific coast state	Atlantic coast state
①	Texas	Michigan
②	Texas	Massachusetts
③	California	Michigan
④	California	Massachusetts

Q18

Although it has been established as an exam question,
Due to copyright reasons, this exam question will not be posted
on the web.

Q19 From ①-④ below choose the item that was **not** included in the “Declaration of the Rights of Man and of the Citizen” issued in France in 1789. **25**

- ① property rights
- ② constitutionalism
- ③ gender equality
- ④ popular sovereignty

Q20 Decisions made by assemblies are based on various methods of voting; for example, some decisions require approval by a simple majority, while others may require approval by at least two thirds of the assembly members. From ①-④ below choose the organ that adopted a voting system with the same effect as cases where all members have the power of veto. **26**

- ① UN Security Council
- ② UN General Assembly
- ③ IMF Executive Board
- ④ League of Nations Assembly

Q21 From ①-④ below choose the statement that is true of parliamentary cabinet systems. **27**

- ① In principle, the majority of the legislature forms the cabinet and runs the government.
- ② The presiding officer of the assembly forms the cabinet by designating cabinet ministers.
- ③ A parliamentary cabinet system is a system where the government is completely dominated by the leading party.
- ④ The cabinet must always resign en masse whenever the assembly passes a motion of no confidence against it.

Q22 The Constitution of Japan guarantees physical liberty as part of fundamental civil liberties. From ①–④ below choose the right that best represents a right classified as a physical liberty. **28**

- ① right to work
- ② right to vote
- ③ right to silence
- ④ intellectual property right

Q23 The concept of “new human rights” has emerged with changes in contemporary society and is becoming firmly implanted in Japan. From ①–④ below choose the combination that best indicates and describes a right considered a new human right. **29**

	Right	Description
①	Right to know	The right to keep one’s personal secrets and honor from being infringed upon by a third party
②	Environmental right	The right to freely select and change the environment where one lives
③	Image right	The right to keep one’s image from being photographed, drawn, published, etc., without permission
④	Right to privacy	The right of citizens to access information concerning politics and the government

Q24 From ①-④ below choose the statement that best describes the federal system of the USA. **30**

- ① Every state has its own constitution, government, legislature, court, military, and currency.
- ② The US Senate is made up of members recommended by each state government.
- ③ The Great Depression led to a further increase in the power of state governments and a further decrease in the federal government's power.
- ④ Thirteen British colonies declared their independence and later established a federal constitution that paved the way for the USA's growth as a federal state.

Q25 Japan's Act on Organ Transplantation was established in 1997 and revised in 2009. From ①-④ below choose the statement that best describes the revision of this law. **31**

- ① The revision made it possible for organs to be donated from brain-dead children aged 14 and younger.
- ② The revision prohibited priority organ donation to one's relatives.
- ③ The revision made it possible for organs to be bought and sold through transplantation coordinators.
- ④ The revision made it possible for organs to be donated from a brain-dead person who had declared his/her refusal to donate, as long as the family gives its consent.

Q26 From ①-④ below choose the item that is **not** one of the purposes of the UN defined in Article 1 of the UN Charter. **32**

- ① To maintain international peace and security
- ② To provide liberty, security, and justice to everyone in the world, without distinction of national borders
- ③ To develop friendly relations among nations based on respect for the principle of equal rights and self-determination of peoples
- ④ To achieve international cooperation in solving international problems of an economic, social, cultural, or humanitarian character

Q27 Substantial efforts to deal with the depletion of the ozone layer, an issue affecting the global environment, began in the 1980s. One result of these efforts was the adoption of an international agreement in 1987. From ①-④ below choose the answer that indicates that agreement. **33**

- ① Kyoto Protocol
- ② Montreal Protocol
- ③ Ramsar Convention
- ④ Washington Convention

Q28 French society in the late 18th century is described as having been composed of three classes: the First Estate, the Second Estate, and the Third Estate. From ①–④ below choose the statement that best describes the members of the Third Estate. **34**

- ① They made up more than 90% of the population and were not required to pay taxes.
- ② They made up more than 90% of the population and were required to pay taxes.
- ③ They made up less than 10% of the population and were not required to pay taxes.
- ④ They made up less than 10% of the population and were required to pay taxes.

Q29 From ①–④ below choose the statement that best describes an event of the “Spring of Nations,” a series of revolutions and upheavals that took place in 1848. **35**

- ① In the UK, the Parliament exiled the King to end his tyrannical rule, leading to the accession of a new monarch who respected the rights of the people.
- ② In Germany, German Navy sailors who demanded greater armament mutinied, leading to the abdication of the Emperor and the establishment of the Weimar Republic.
- ③ In France, an uprising by residents of Paris led to urban warfare, which was followed by the King’s abdication and the establishment of a provisional government by republicans.
- ④ In Russia, a peasant’s revolt sparked an armed uprising by the Communist Party, which led to the establishment of the USSR.

Q30 From ①-④ below choose the statement that best describes an international agreement or disarmament process that followed World War I. **36**

- ① The Washington Naval Conference resulted in the termination of the US-Japan Security Treaty.
- ② The London Naval Conference prohibited the possession of submarines.
- ③ The Locarno Treaties established diplomatic relations between Germany and the USSR.
- ④ The countries that signed the Kellogg-Briand Pact in Paris pledged not to use war as a means of settling international disputes.

Q31 The year 1960 saw the birth of many independent countries in Africa. From ①-④ below choose the answer that indicates an African country that gained independence in that year. **37**

- ① Egypt
- ② Nigeria
- ③ Ethiopia
- ④ South Africa

Q32 From ①–④ below choose the statement that best describes an event in the collapse of socialist regimes in the 1980s. **38**

- ① In Hungary, Communist rule was ended as a result of the execution of the country's dictator.
- ② In Yugoslavia, a multi-party system was introduced under the direction of Josip Broz Tito.
- ③ In Poland, Communist rule was ended as a result of a democratic election.
- ④ In the USSR, Boris Yeltsin outlawed the Communist Party after he came to power through a coup d'état.

The end of the questions for Japan and the World. Leave answer spaces

39 — **60** blank.

Do not take this question booklet out of the room.