

## Outline of Results

### 2004 Examination for Japanese University Admission for International Students (2nd Session)

#### Contents

1. Guidelines for the 2004 Examination for Japanese University Admission for International Students (EJU)	--	1
2. Examination Details	-----	3
3. List of Average Scores by Subject	-----	6
4. Score Distribution	-----	7

Japan Student Services Organization

# Guidelines for the 2004 Examination for Japanese University Admission for International Students (EJU)

## 1. Purpose

This examination is used to evaluate the Japanese language proficiency and the basic academic abilities of international students who wish to study at Japanese universities at the undergraduate level.

## 2. Examination Administrator

Japan Student Services Organization administers the examination with the cooperation of the Ministry of Education, Culture, Sports, Science and Technology, the Ministry of Foreign Affairs, Japanese universities, and affiliated institutions in Japan and overseas.

## 3. General Description of the Examination

### (1) Eligibility:

International students who wish to study at Japanese universities (undergraduate level)

### (2) Date of exam:

1st Session June 20, 2004 (Sunday)

2nd Session November 14, 2004 (Sunday)

\* Note: In Indonesia, Malaysia, and Singapore, the 2nd session will be held on November 7, 2004

### (3) Venues:

Japan: Hokkaido, Miyagi, Gunma, Saitama, Chiba, Tokyo, Kanagawa, Ishikawa or Fukui, Aichi, Kyoto, Osaka, Hyogo, Okayama or Hiroshima, Fukuoka and Okinawa

Overseas: Indonesia (Jakarta and Surabaya), Malaysia (Kuala Lumpur), Mongolia (Ulaanbaatar), Myanmar (Yangon), Philippines (Manila), Republic of Korea (Seoul and Busan), Russia (Vladivostok), Singapore, Taiwan (Taipei), Thailand (Bangkok) and Vietnam (Hanoi and Ho Chi Minh City)

Note: The EJU will start to be held in Vladivostok, Russia with the 2nd Session.

### (4) Subjects:

Depending on the university they wish to enter and the course of study they wish to pursue, the examinees select the subject tests that they will take from the following.

Subject	Purpose	Length	Score Range
Japanese as a Foreign Language	Measurement of the Japanese language skills (academic Japanese) required for studying at Japanese universities.	120 minutes	0-400 scores
Science	Measurement of basic academic ability in science (Physics, Chemistry, and Biology) as needed to study in a science department of a Japanese university	80 minutes	0-200 scores
Japan and the World	Measurement of the basic academic skills in required in liberal arts, particularly thinking and logical abilities, for studying at Japanese universities.	80 minutes	0-200 scores
Mathematics	Measurement of the basic academic skills required in mathematics for studying at Japanese universities.	80 minutes	0-200 scores

### [Remarks]

The test in Japanese as a Foreign Language consists of writing, reading comprehension, listening comprehension, and listening and reading comprehension. The score range listed above does not include the writing section, which will be scored and scores indicated, based on the standards for grammatical and logical abilities.

In the science area, depending on the university they want to enter and the course of study they want to pursue, examinees have to select two subjects from physics, chemistry and biology.

In the mathematics area, depending on the university they want to enter and the course of study they want to pursue, examinees have to select either of Course 1 for liberal arts faculties or science faculties where comparatively less mathematics is required, or Course 2 for faculties where a higher level mathematics is required.

Examinees may not choose to take both the Science test and the Japan and the World test.

The score listed above will not given in the form of the raw score but on a common scale.

Refer to the syllabuses for each subject.

### (5) Languages for the Questions:

Since the questions can be written in Japanese or English, the examinee should notify which they prefer in the application. (Japanese as a Foreign Language test will be given only in Japanese.)

### (6) Answering method:

Multiple-choice method (Mark sheet) (the Japanese as a Foreign Language test will include a writing section).

#### 4. Application Procedures, etc.

##### (1) Application Procedure

Application form: As prescribed

Examination fee: Japan	One subject:	¥5,460 (including tax)
	Two subjects or more:	¥10,920 (including tax)
Overseas	Indonesia	IDR 40,000
	Malaysia	MYR 60
	Mongolia	MNT 10,000
	Myanmar	FEC 15
	Philippines	PHP 250
	Republic of Korea	RUB 300
	One subject	KRW 30,000
	Two subjects or more	KRW 50,000
	Russia	RUB 300
	Singapore	SGD 36
	Taiwan	
	One subject	TWD 1,200
	Two subjects or more	TWD 1,600
	Thailand	THB 300
	Vietnam	VTD 70,000

Application period: Japan

(1st Session) From February 23 (Monday) to March 19, 2004 (Friday)  
(The application must be postmarked no later than March 19.)

(2nd Session) From July 5 (Monday) to July 30, 2004 (Friday)  
(The application must be postmarked no later than July 30.)

Overseas Same as in Japan

Applications: Japan The applications should be submitted to Testing Division, Student Exchange Department, Japan Student Services Organization.

Overseas The applications should be submitted to the Overseas Representatives in each country or region.

##### (2) Instructions for the Examination

The details of the application procedures, and so forth, will be released in the "Bulletin of 2004 Examination for Japanese University Admission for International Students".

Bulletin Vendors: Japan Bulletin is scheduled to go on sale at major bookstores throughout Japan on February 23, 2004 (Monday). Cost is ¥510 (including tax) per copy.

Overseas To be decided through consultation with Overseas Representative in each country or region.

##### (3) Forwarding of Examination Voucher

Japan For the application form received, Examination Voucher will be forwarded  
(1st Session) May 21, 2004 (Friday) (tentative)  
(2nd Session) October 22, 2004 (Friday) (tentative)

Overseas To be decided through consultation with Overseas Representative in each country or region.

#### 5. Score report

##### (1) Score report to Examinees

Score report will be sent

(1st Session) July 23, 2004 (Friday)

(2nd Session) December 20, 2004 (Monday)

##### (2) Notification to Universities

JASSO will send universities a score examination report, and begin responding to score of 1st Session inquiries from universities from late July 2004, for 2nd Session from late December 2004.

Inquires:	Japan Student Services Organization Student Exchange Department, Testing Division 4-5-29 Komaba, Meguro-ku, Tokyo 153-8503, Japan Telephone: 03-6407-7457 Fax: 03-6407-7462 E-mail: eju@jasso.go.jp
-----------	--

## Examination Details

### 1. Number of applicants and examinees by site

Examination Site			Applicants	Examinees
Japan	Hokkaido		296	277
	Tohoku	Miyagi	506	455
	Kanto	Gunma	212	170
		Saitama	1,197	1,033
		Chiba	1,187	1,002
		Tokyo	11,235	9,304
		Kanagawa	1,577	1,389
	Chubu	Fukui	157	131
		Aichi	1,235	1,075
	Kinki	Kyoto	1,165	1,094
		Osaka	2,337	2,094
		Hyogo	914	819
	Chugoku	Hiroshima	768	693
	Kyushu	Fukuoka	2,151	1,982
	Okinawa		146	123
Total in Japan			25,083	21,641
Overseas	Indonesia	Jakarta	275	210
		Surabaya	102	84
	Malaysia	Kuala Lumpur	40	37
	Mongolia	Ulaanbaatar	45	37
	Myanmar	Yangon	109	85
	Philippines	Manila	10	6
	Russia	Vladivostok	7	5
	Republic of Korea	Seoul	385	296
		Busan	194	159
	Singapore		13	9
	Taiwan	Taipei	239	181
	Thailand	Bangkok	207	126
	Vietnam	Hanoi	52	41
		Ho Chi Minh City	29	21
	Total overseas			1,707
Grand total			26,790	22,938

Note: The number of applicants and examinees who selected the English version of EJU are as follows.

	Applicants	Examinees
Japan	191	170
Overseas	706	516
Total	897	686

## 2. Examination venues

Japan	Hokkaido	Sapporo International University	
	Miyagi	Tohoku University (Kawauchi Campus)	
	Gunma	Gunma Prefectural Women's University	
	Saitama	Kyoei University	
		Saitama University	
	Chiba	Keiai University (Inage Campus)	
	Tokyo	Tokyo University of Foreign Studies	
		Tokyo Gakugei University (Koganei Campus)	
		Tokyo Institute of Technology (Ookayama Campus)	
		Hitotsubashi University (Kunitachi Campus)	
		Shibaura Institute of Technology (Shibaura Campus)	
		Kyorin University (Hachioji Campus)	
		Chuo University (Tama Campus)	
		Kanagawa	Yokohama National University
		Fukui	Fukui University (Bunkyo Campus)
		Aichi	Toyohashi University of Technology
	Aichi University (Toyohashi Campus)		
	Kyoto	Kyoto University (Yoshida Campus)	
	Osaka	Osaka University (Toyonaka Campus)	
	Hyogo	Kwansei Gakuin University (Nishinomiya-Uegahara Campus)	
Hiroshima	Hiroshima University (Higashi-Hiroshima Campus)		
Fukuoka	Kyushu University (Ropponmatsu Campus)		
Okinawa	University of the Ryukyus (Chihara Campus)		
Overseas	Indonesia (Jakarta)	University of Indonesia	
	(Surabaya)	Nihon-Indonesia Culture Exchange Center	
	Malaysia (Kuala Lumpur)	Institut Bahasa Teikyo	
	Mongolia (Ulaanbaatar)	Mongolia-Japan Center	
	Myanmar (Yangon)	Summit Parkview Hotel	
	Philippines (Manila)	De La Salle University-College of Saint Benilde	
	Republic of Korea (Seoul)	Kyunggi High School	
		(Busan)	Busan Design High School
	Russia (Vladivostok)	Oriental Studies Institutes, Far Eastern National University	
	Singapore	The Japanese Cultural Society, Singapore	
	Taiwan (Taipei)	The Language, Training & Testing Center	
	Thailand (Bangkok)	Old Japan Students' Association, Thailand	
	Vietnam (Hanoi)	Foreign Trade University (Vietnam-Japan Cooperation Center)	
		(Ho Chi Minh City)	University of Social Sciences and Humanities, Ho Chi Minh City

3. Number of examinees by nation/region of origin (Japan)

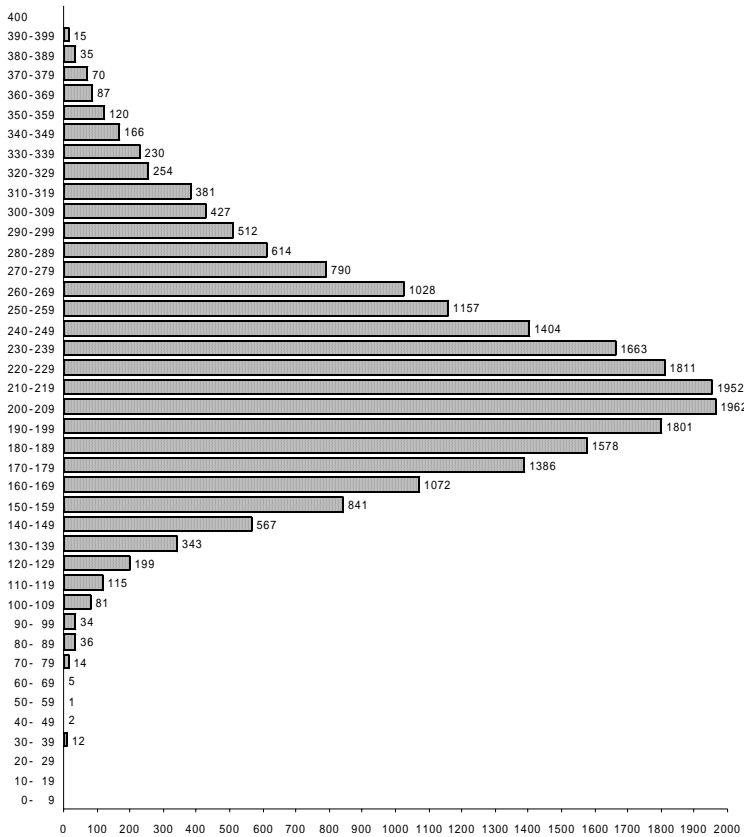
Country/Region	Examinees	Country/Region	Examinees
China	18,209	Croatia	2
Republic of Korea	1,864	New Zealand	2
Taiwan	418	Uzbekistan	2
Vietnam	213	Democratic Republic of Congo	2
Indonesia	113	Afghanistan	1
Nepal	111	Iran	1
Sri Lanka	101	Austria	1
Mongolia	86	Switzerland	1
Thailand	85	Spain	1
Malaysia	84	Slovak Republic	1
Myanmar	73	Czech Republic	1
Bangladesh	70	Norway	1
United Kingdom	37	Bulgaria	1
Philippines	18	Belgium	1
U.S.A.	16	Romania	1
Russia	14	Costa Rica	1
India	12	Colombia	1
Cambodia	12	Chili	1
Peru	12	Paraguay	1
Brazil	9	Venezuela	1
Canada	8	Moldova	1
Singapore	6	Ghana	1
Laos	5	Guinea	1
Turkey	5	Cote d'Ivoire	1
North Korea	4	Sudan	1
Germany	4	Senegal	1
Australia	4	Mali	1
Mexico	4	Morocco	1
Ukraine	4	Others	5
France	3	Total 47 Countries / Regions	21,641

### List of Average Scores by Subject

Subject (Score Range)		Examinees	Average Score	Highest Score	Lowest Score	Standard Dev.
Japanese as a Foreign Language	Listening (0-120)	22,765	64.0 (53.3%)	117 (97.5%)	7 (5.8%)	17.1 (14.3%)
	Listening and Reading (0-120)		63.2 (52.7%)	118 (98.3%)	9 (7.5%)	17.3 (14.4%)
	Reading (0-160)		93.6 (58.5%)	160 (100.0%)	22 (13.8%)	24.1 (15.1%)
	Total (0-400)		220.8 (55.2%)	395 (98.8%)	38 (9.5%)	51.2 (12.8%)
	Writing (0-6)		3.9 (65.0%)	6 (100.0%)	0 (0.0%)	1.4 (23.3%)
Science	Physics (0-100)	2,226	54.1 (54.1%)	86 (86.0%)	17 (17.0%)	12.5 (12.5%)
	Chemistry (0-100)	2,366	50.9 (50.9%)	94 (94.0%)	20 (20.0%)	14.0 (14.0%)
	Biology (0-100)	699	57.4 (57.4%)	88 (88.0%)	11 (11.0%)	13.3 (13.3%)
Japan and the World (0-200)		11,635	118.8 (59.4%)	198 (99.0%)	8 (4.0%)	32.8 (16.4%)
Mathematics	Course 1 (0-200)	8,624	100.9 (50.5%)	189 (94.5%)	42 (21.0%)	23.6 (11.8%)
	Course 2 (0-200)	2,448	107.2 (53.6%)	196 (98.0%)	45 (22.5%)	20.0 (10.0%)

Note: Percentages indicate the ratio to a perfect score.

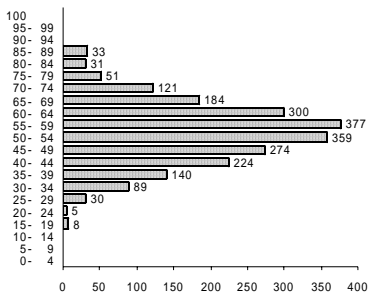
## Score Distribution



Japanese as a Foreign Language

Total examinees 22,765

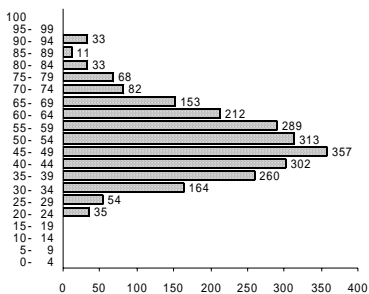
Average Score 220.8  
 Highest Score 395.0  
 Lowest Score 38.0



Physics

Total examinees 2,226

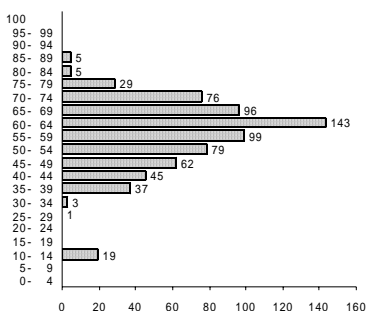
Average Score 54.1  
 Highest Score 86.0  
 Lowest Score 17.0



Chemistry

Total examinees 2,366

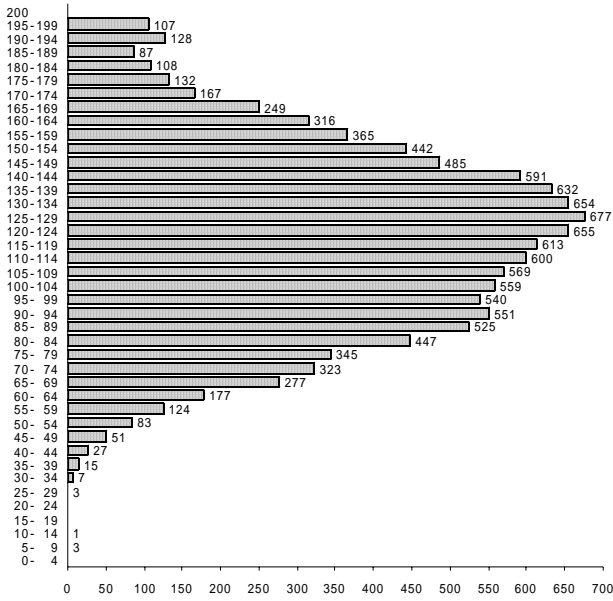
Average Score 50.9  
 Highest Score 94.0  
 Lowest Score 20.0



Biology

Total examinees 699

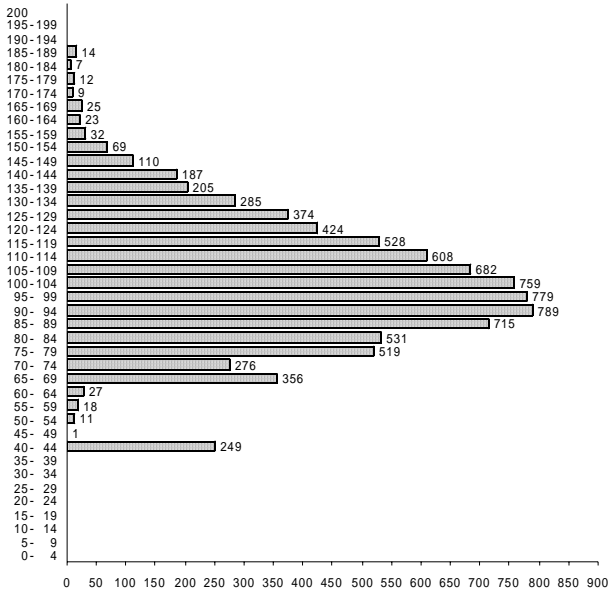
Average Score 57.4  
 Highest Score 88.0  
 Lowest Score 11.0



Japan and the World

Total examinees 11,635

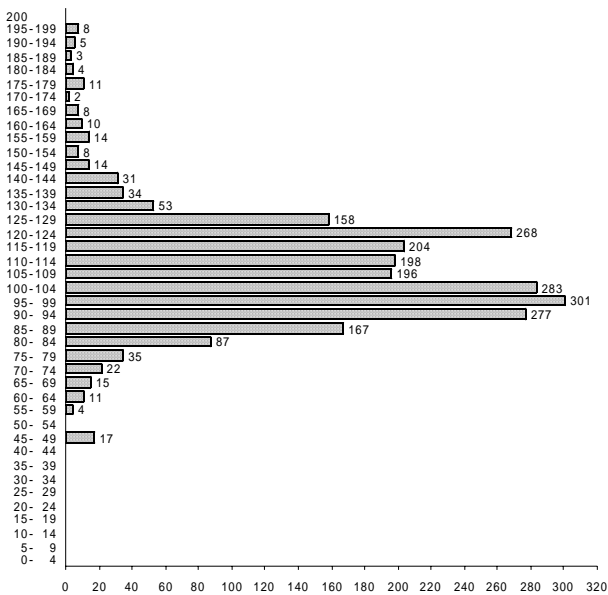
Average Score 118.8  
 Highest Score 198.0  
 Lowest Score 8.0



Mathematics (Course 1)

Total examinees 8,624

Average Score 100.9  
 Highest Score 189.0  
 Lowest Score 42.0



Mathematics (Course 2)

Total examinees 2,448

Average Score 107.2  
 Highest Score 196.0  
 Lowest Score 45.0