

## **Outline of Results**

### **2007 Examination for Japanese University Admission for International Students (2nd Session)**

#### **Contents**

1. Guidelines for the 2007 Examination for Japanese University Admission for International Students (EJU)	1
2. Examination Details	3
3. List of Average Scores by Subject	6
4. Score Distribution	7
5. Cumulative Distribution of Scaled Score	10

Japan Student Services Organization (JASSO)

# Guidelines for the 2007 Examination for Japanese University Admission for International Students (EJU)

## 1. Purpose

This examination is used to evaluate the Japanese language proficiency and the basic academic abilities of international students who wish to study at the undergraduate level at universities or other such higher educational institutions in Japan.

## 2. Examination Administrator

The Japan Student Services Organization (JASSO) administers the examination with the cooperation of the Ministry of Education, Culture, Sports, Science and Technology, the Ministry of Foreign Affairs, Japanese universities, and affiliated institutions in Japan and overseas.

## 3. General Description of the Examination

### (1) Eligibility:

International students who wish to study at the undergraduate level at universities or other such higher educational institutions in Japan

### (2) Date of exam:

1st Session June 17, 2007 (Sunday)

2nd Session November 11, 2007 (Sunday)

### (3) Venues:

Japan: Hokkaido, Miyagi, Gunma, Saitama, Chiba, Tokyo, Kanagawa, Ishikawa or Toyama, Aichi, Kyoto, Osaka, Hyogo, Okayama or Hiroshima, Fukuoka and Okinawa

Outside Japan: India (New Delhi), Indonesia (Jakarta and Surabaya), Malaysia (Kuala Lumpur), Mongolia (Ulaanbaatar), Myanmar (Yangon), Philippines (Manila), Republic of Korea (Seoul and Busan), Russia (Vladivostok), Singapore, Sri Lanka (Colombo), Taiwan (Taipei), Thailand (Bangkok) and Vietnam (Hanoi and Ho Chi Minh City)

### (4) Subjects:

Depending on the university they wish to enter and the course of study they wish to pursue, the examinees select the subject tests that they will take from the following.

Subject	Purpose	Length	Score Range
Japanese as a Foreign Language	Measurement of the Japanese language skills (academic Japanese) required for studying at Japanese universities.	120 minutes	0-400
Science	Measurement of the basic academic skills in science (Physics, Chemistry, and Biology) necessary for studying in a science department of a Japanese university.	80 minutes	0-200
Japan and the World	Measurement of the basic academic skills in liberal arts, particularly thinking and logical abilities, necessary for studying at Japanese universities.	80 minutes	0-200
Mathematics	Measurement of the basic academic skills in mathematics necessary for studying at Japanese universities.	80 minutes	0-200

## [Remarks]

- ① The test in Japanese as a Foreign Language consists of writing, reading comprehension, listening comprehension, and listening and reading comprehension. The score range listed above does not include the writing section, which is scored, based on the standards for grammatical and logical abilities, and each of these abilities are indicated in the range of 0 to 3 points in examinees' writing section scores.
  - ② In the science test, examinees select two subjects from physics, chemistry and biology depending on the requirements of the university they wish to enter and the course of study they wish to pursue.
  - ③ In the mathematics test, examinees select either of Course 1 if they plan to enter liberal arts programs or science programs requiring comparatively less knowledge of mathematics, or Course 2 if they plan to enter programs requiring advanced knowledge of mathematics depending on the requirements of the university they wish to enter and the course of study they wish to pursue.
  - ④ Examinees may not choose to take both the Science test and the Japan and the World test.
  - ⑤ The score ranges listed are not raw scores; instead, they are based on a common scale.
  - ⑥ Refer to the syllabuses for each subject.
- (5) Examination languages option:  
The EJU is available in Japanese or English, except for the Japanese as a Foreign Language test, which is given in Japanese only, applicants need to indicate their preference in the application depending on the requirements of the university they wish to enter and the course of study they wish to pursue.
- (6) Answering format:  
All questions use a multiple-choice format, except for the writing section of the Japanese as a Foreign Language test.

#### 4. Application Procedures, etc.

##### (1) Application Procedure

① Application form: As prescribed

② Examination fee: Japan

One subject: JPY 5,460 (including tax)

Two or three subjects: JPY 10,920 (including tax)

Outside Japan

India INR 500

Indonesia IDR 40,000

Malaysia MYR 60

Mongolia MNT 10,000

Myanmar FEC 15

Philippines PHP 250

Republic of Korea

One subject: KRW 30,000

Two or three subjects: KRW 50,000

Russia RUB 300

Singapore SGD 36

Sri Lanka LKR 700

Taiwan

One subject: TWD 1,200

Two or three subjects: TWD 1,600

Thailand THB 300

Vietnam VTD 70,000

③ Application period: Japan 1st Session From February 19 (Monday) to March 16, 2007(Friday)

(The application must be postmarked by March 16.)

2nd Session From July 2 (Monday) to July 27, 2007 (Friday)

(The application must be postmarked by July 27.)

Outside Japan Same as in Japan

④ Applications: Japan The applications should be submitted to Testing Division, Student Exchange Department, Japan Student Services Organization.

Outside Japan The applications should be submitted to the Overseas Representatives in each country or region.

##### (2) EJU Bulletin

The details of the application procedure and other information will be released in the "Bulletin of the 2007 Examination for Japanese University Admission for International Students (EJU)".

Bulletin Vendors: Japan The bulletin is scheduled to go on sale at major bookstores throughout Japan on February 19, 2007 (Monday).

The price is ¥510 (including tax) per copy.

Outside Japan To be decided through consultation with the Overseas Representative in each country or region.

##### (3) Sending of Examination Voucher

Japan Examination vouchers will be sent on the following dates (tentative) in response to applications received.

1st Session May 18, 2007 (Friday)

2nd Session October 19 2007 (Friday)

Outside Japan To be decided through consultation with the Overseas Representative in each country or region.

#### 5. Score Report and Notification

##### (1) Score Reports to Examinees

Score reports will be sent to examinees on the following dates (tentative).

1st Session July 20, 2007 (Friday)

2nd Session December 18, 2007 (Tuesday)

##### (2) Notification to Universities

JASSO will begin responding to score inquiries from universities in late July 2007 for 1st Session, late December 2007 for 2nd Session.

Inquires:	Japan Student Services Organization (JASSO) Student Exchange Department, Testing Division 4-5-29 Komaba, Meguro-ku, Tokyo 153-8503 Japan Telephone: 03-6407-7457 Fax: 03-6407-7462 E-mail: eju@jasso.go.jp
-----------	---

## Examination Details

### 1. Number of applicants and examinees by site

Examination Site		Applicants	Examinees	
In Japan	Hokkaido		176	161
	Tohoku	Miyagi	283	264
	Kanto	Gunma	144	121
		Saitama	534	443
		Chiba	686	595
		Tokyo	8,475	7,155
		Kanagawa	758	656
	Chubu	Ishikawa	174	160
		Aichi	1,147	1,002
	Kinki	Kyoto	813	757
		Osaka	2,131	1,871
		Hyogo	690	636
	Chugoku	Okayama	807	744
	Kyushu	Fukuoka	2,163	2,034
	Okinawa		229	215
Total in Japan		19,210	16,814	
Outside Japan	India	New Delhi	10	7
	Indonesia	Jakarta	241	162
		Surabaya	50	36
	Malaysia	Kuala Lumpur	211	210
	Mongolia	Ulaanbaatar	78	62
	Myanmar	Yangon	53	41
	Philippines	Manila	13	8
	Republic of Korea	Seoul	1,750	1,388
		Busan	494	430
	Russia	Vladivostok	10	9
	Singapore		21	15
	Sri Lanka	Colombo	39	25
	Taiwan	Taipei	230	170
	Thailand	Bangkok	111	62
	Vietnam	Hanoi	63	48
		Ho Chi Minh City	123	108
Total outside Japan		3,497	2,781	
Grand total		22,707	19,595	

Note: The number of applicants and examinees who selected the English version of EJU are as follows.

	Applicants	Examinees
In Japan	250	227
Outside Japan	549	360
Total	799	637

2. Examination venues

Name of Prefecture	Name of Examination Venue
Hokkaido	Sapporo International University
Miyagi	Tohoku University Kawauchi Campus
Gunma *	Jobu University Takasaki Campus
Saitama *	Dokkyo University
Chiba *	Ryutsu Keizai University Shinmatsudo Campus
	Reitaku University
Tokyo	Tokyo-kasei University Itabashi Campus
	Meiji University Surugadai Campus
	The University of Tokyo Komaba Campus
	Tokyo Institute of Technology Ookayama Campus
	The University of Electro-Communications
	Soka University
Kanagawa *	Yokohama City University Kanazawa Hakkei campus
Ishikawa *	Kanazawa University Kakuma Campus
Aichi	Nagoya University Higashiyama Campus
Kyoto *	Kyoto Sangyo University
Osaka	Osaka University Toyonaka Campus
Hyogo *	Kwansei Gakuin University Nishinomiya-Uegahara Campus
Okayama	Okayama Shoka University
Fukuoka	Kyushu University Ropponmatsu Campus
Okinawa	Okinawa International University

\* An examination language "English" is not available.

Country and Region	City	Name of Examination Venue
India	New Delhi	MOSAI Institute of Japanese Language
Indonesia	Jakarta	Depok Campus, University of Indonesia
	Surabaya	IMA Center
Malaysia	Kuala Lumpur	KDU College
Mongolia	Ulaanbaatar	Mongolia-Japan Center
Myanmar	Yangon	Hotel Nikko Royal Lake Yangon
Philippines	Manila	De La Salle University-College of Saint Benilde
Republic of Korea	Seoul	Jayang Middle School / High School
	Busan	Busan Design High School
Russia	Vladivostok	Oriental Studies Institute, Far Eastern National University
Singapore		The Japanese Cultural Society, Singapore
Sri Lanka	Colombo	The Institute of Chartered Accountants of Sri Lanka
Taiwan	Taipei	The Language Training & Testing Center
Thailand	Bangkok	Old Japan Students' Association, Thailand
Vietnam	Hanoi	Foreign Trade University (Vietnam-Japan Human Resources Cooperation Center)
	Ho Chi Minh City	Vietnam-Japan Human Resources Cooperation Center

3. Number of examinees by nation/region of origin (Japan)

Country / Region	Examinees	Country / Region	Examinees
China	11,590	Ukraine	3
Republic of Korea	2,752	Ghana	2
Taiwan	581	Nigeria	2
Vietnam	417	Chile	2
Thailand	260	Dominican Republic	2
Nepal	233	Ecuador	2
Sri Lanka	126	El Salvador	2
Saudi Arabia	121	Bhutan	2
Indonesia	108	Austria	2
Myanmar	97	Italy	2
Malaysia	85	Portugal	2
Mongolia	70	Cote d'Ivoire	1
Bangladesh	58	Kenya	1
United Kingdom	35	South Africa	1
India	32	Tanzania	1
Philippines	25	Tunisia	1
U.S.A.	24	Argentina	1
Brazil	17	Costa Rica	1
Canada	17	French Guiana	1
Cambodia	16	Honduras	1
Uzbekistan	15	Venezuela	1
Russia	13	Democratic People's Republic of Korea	1
Sweden	11	The Democratic Republic of Timor-Leste	1
France	10	Estonia	1
Australia	10	Finland	1
Germany	8	Netherlands	1
Peru	7	Romania	1
Singapore	5	Switzerland	1
Pakistan	4	Jordan	1
Mexico	3	Lebanon	1
Laos	3	Fiji	1
Spain	3	Kyrgyzstan	1
Iran	3	Others	5
Israel	3	Total	16,814
Turkey	3	67 countries / Regions	

## List of Average Scores by Subject

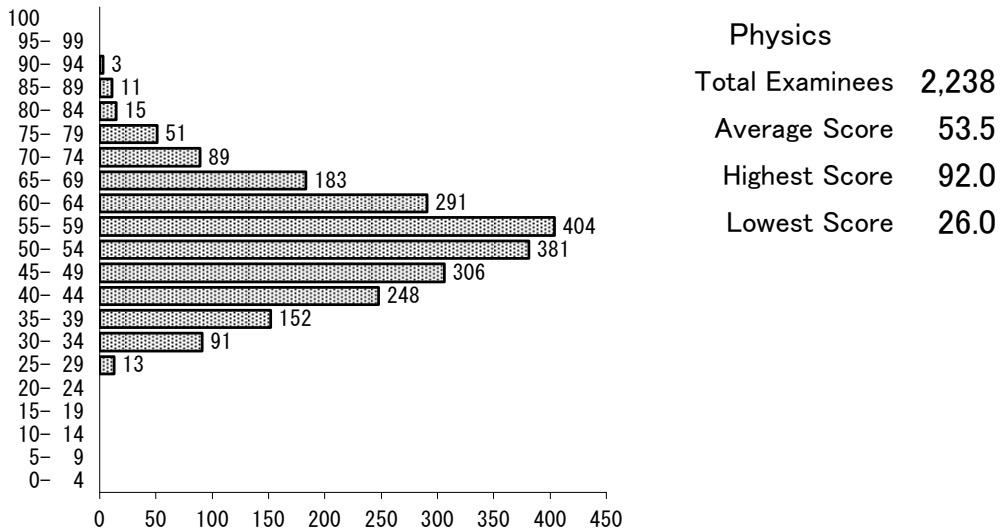
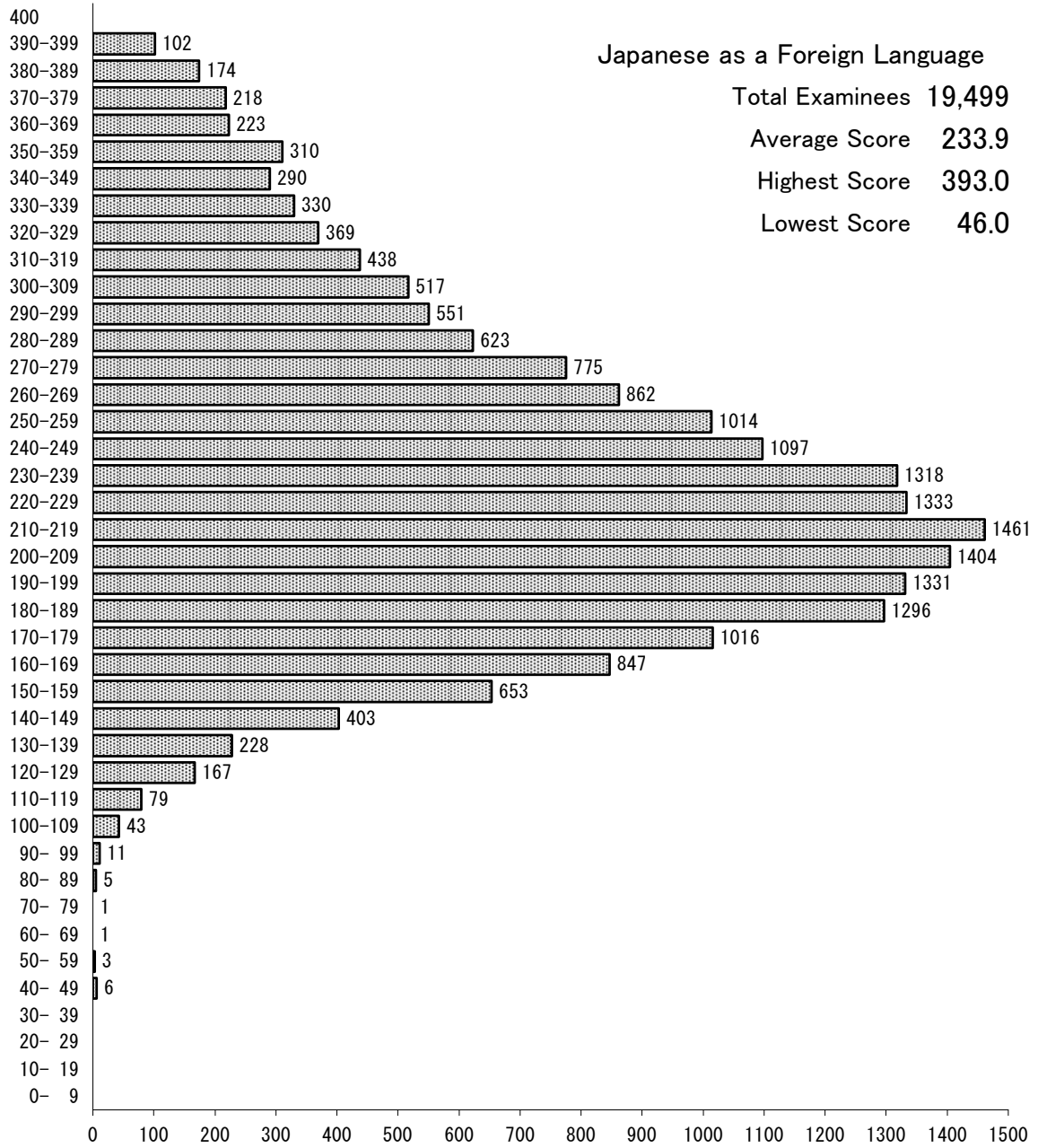
Subject (Score Range)		Examinees	Average Score	Highest Score	Lowest Score	Standard Dev.
Japanese as a Foreign Language	Listening (0-120)	1 9, 4 9 9	6 7. 5 (56.3%)	1 1 5 (95.8%)	1 1 (9.2%)	1 9. 8 (16.5%)
	Listening and Reading (0-120)		6 6. 1 (55.1%)	1 1 8 (98.3%)	1 1 (9.2%)	1 9. 3 (16.1%)
	Reading (0-160)		1 0 0. 3 (62.7%)	1 6 0 (100.0%)	2 4 (15.0%)	2 7. 2 (17.0%)
	Total (0-400)		2 3 3. 9 (58.5%)	3 9 3 (98.3%)	4 6 (11.5%)	5 9. 7 (14.9%)
	Writing (0-6)		3. 6 (60.0%)	6 (100.0%)	0 (0.0%)	1. 5 (25.0%)
Science	Physics (0-100)	2, 2 3 8	5 3. 5 (53.5%)	9 2 (92.0%)	2 6 (26.0%)	1 1. 2 (11.2%)
	Chemistry (0-100)	2, 5 0 6	4 7. 3 (47.3%)	9 0 (90.0%)	1 6 (16.0%)	1 4. 1 (14.1%)
	Biology (0-100)	7 1 2	5 9. 4 (59.4%)	9 0 (90.0%)	1 9 (19.0%)	1 1. 9 (11.9%)
Japan and the World (0-200)		8, 4 0 2	1 1 9. 0 (59.5%)	1 9 7 (98.5%)	9 (4.5%)	3 5. 5 (17.8%)
Mathematics	Course 1 (0-200)	7, 0 1 4	1 0 0. 2 (50.1%)	1 8 3 (91.5%)	2 4 (12.0%)	2 7. 7 (13.9%)
	Course 2 (0-200)	2, 3 5 7	1 1 1. 5 (55.8%)	1 9 8 (99.0%)	3 6 (18.0%)	2 1. 8 (10.9%)

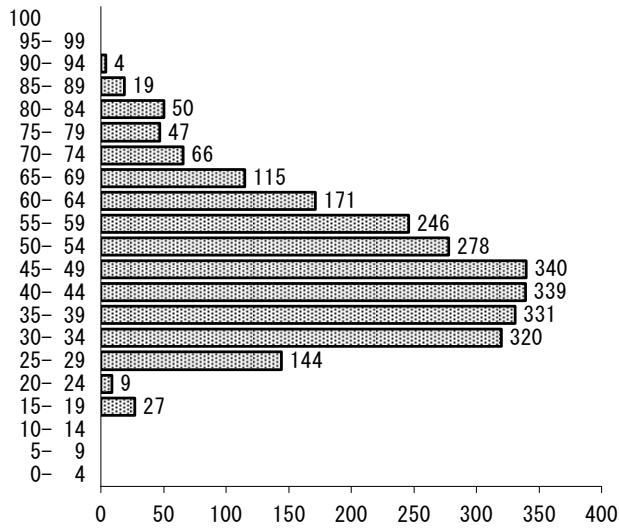
Note: Percentages indicate the ratio to a perfect score.

\* Correction on December 25, 2008

In the column of Chemistry, "Average Score" and "Standard Dev. " were corrected due to the mistranslation of a supplementary term (technical jargon translated into English) and some relevant examinees got additional scores.

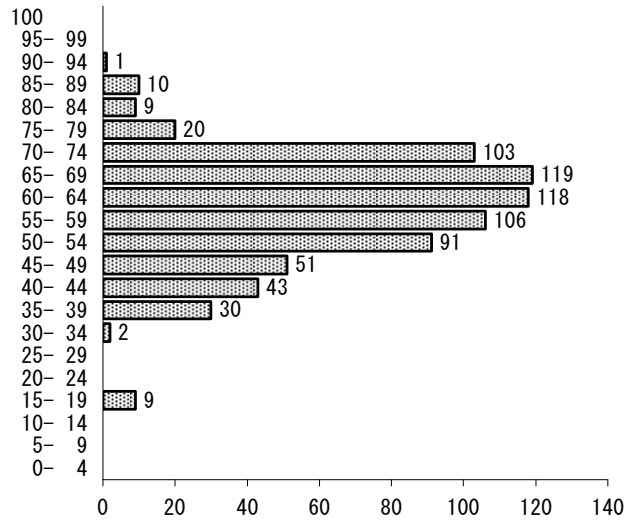
## Score Distribution



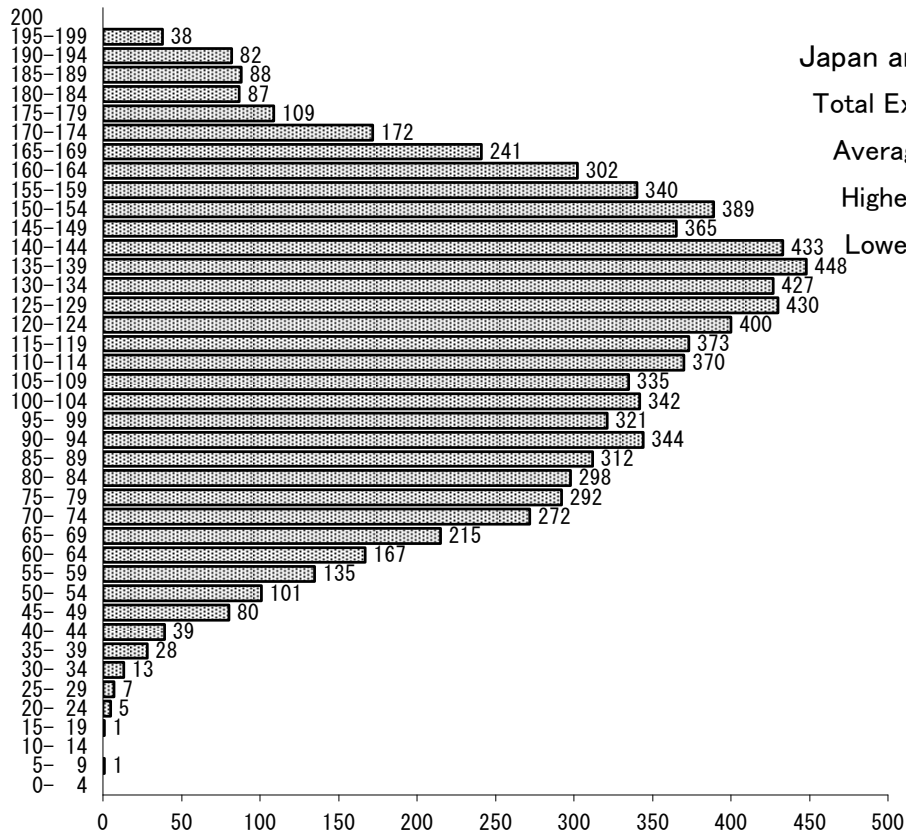


**Chemistry**  
 Total Examinees 2,506  
 Average Score 47.3  
 Highest Score 90.0  
 Lowest Score 16.0

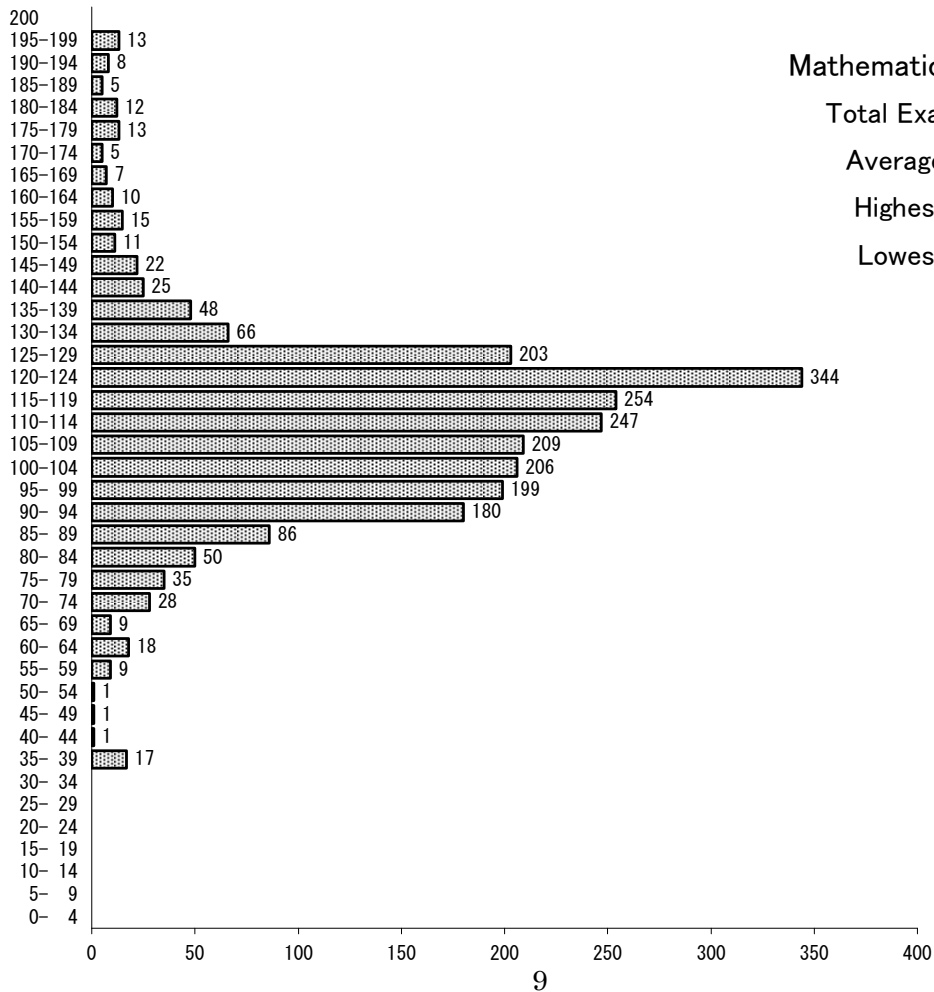
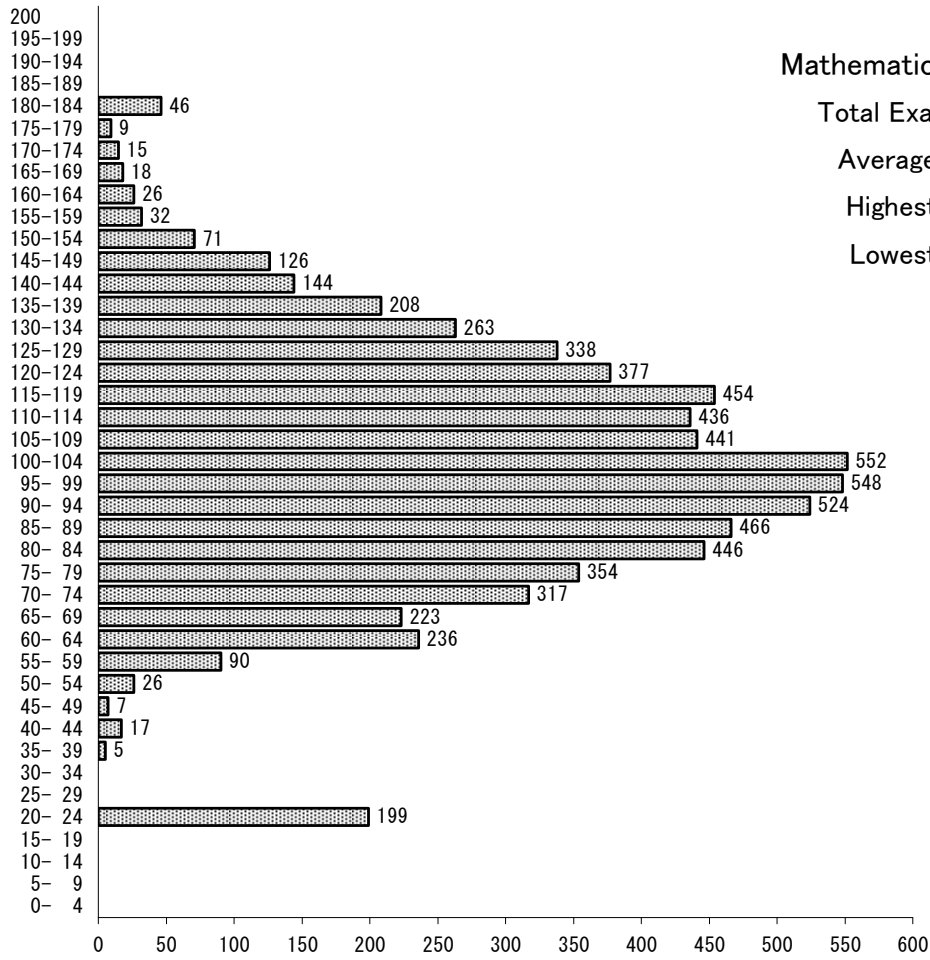
\* Correction on December 25, 2008  
 "Average Score" and "Score Distribution" were corrected due to the mistranslation of a supplementary term (technical jargon translated into English) and some relevant examinees got additional scores.



**Biology**  
 Total Examinees 712  
 Average Score 59.4  
 Highest Score 90.0  
 Lowest Score 19.0



**Japan and the World**  
 Total Examinees 8,402  
 Average Score 119.0  
 Highest Score 197.0  
 Lowest Score 9.0



## Cumulative Distribution of Scaled Score

