

Outline of Results

2003 Examination for Japanese University Admission for International Students (1st Session)

Contents

1. Guidelines for the 2003 Examination for Japanese University Admission for International Students (EJU)
2. Examination Details
3. List of Average Scores by Subject
4. Score Distribution

Association of International Education, Japan

Guidelines for the 2003 Examination for Japanese University Admission for International Students (EJU)

1. Purpose

This examination is used to evaluate the Japanese language proficiency and the basic academic abilities of international students who wish to study at Japanese universities at the undergraduate level.

2. Examination Administrator

The Association of International Education, Japan, administers the examination with the cooperation of the Ministry of Education, Culture, Sports, Science and Technology, the Ministry of Foreign Affairs, Japanese universities, and affiliated institutions in Japan and overseas.

3. General Description of the Examination

(1) Eligibility:

International students who wish to study at Japanese universities

(2) Date of exam:

1st Session June 15, 2003 (Sunday)
2nd Session November 16, 2003 (Sunday)

(3) Venues:

Japan: Hokkaido, Miyagi, Gunma, Saitama, Chiba, Tokyo, Kanagawa, Ishikawa, Aichi, Kyoto or Shiga, Osaka, Hyogo, Hiroshima or Okayama, Fukuoka, and Okinawa
Overseas: Indonesia (Jakarta and Surabaya), Malaysia (Kuala Lumpur), Mongolia (Ulaanbaatar), Philippines (Manila), Singapore, South Korea (Seoul and Busan), Taiwan (Taipei), Thailand (Bangkok) and Vietnam (Hanoi)

(4) Subjects:

Depending on the university they wish to enter and the course of study they wish to pursue, the examinees select the subject tests that they will take from the following.

Subject	Purpose	Length	Score Range
Japanese as a Foreign Language	Measurement of ability to study in Japanese at the university level. (academic Japanese)	120 minutes	0-400
Science	Measurement of the basic academic skills in science (Physics, Chemistry, and Biology) necessary for studying in a science department of a Japanese university	80 minutes	0-200
Japan and the World	Measurement of the basic academic skills in liberal arts, particularly thinking and logical abilities, necessary for studying at Japanese universities.	80 minutes	0-200
Mathematics	Measurement of the basic academic skills in mathematics necessary for studying at Japanese universities.	80 minutes	0-200

[Remarks]

- a. The test in Japanese as a Foreign Language consists of writing, listening comprehension, listening and reading comprehension, and reading comprehension. The score range listed above does not include the writing section, which is scored, based on the standards for grammatical and logical abilities. Examinees' writing section scores are indicated in their examination score reports.
- b. In the science test, examinees select two subjects from physics, chemistry and biology, depending on the requirements of the university they want to enter and the course of study they want to pursue.
- c. In the mathematics test, examinees select Course 1 if they plan to enter liberal arts programs or science programs requiring comparatively less knowledge of mathematics, or Course 2 if they plan to enter programs requiring advanced knowledge of mathematics.
- d. Examinees may not choose to take both the Science test and the Japan and the World test.
- e. The score ranges listed above are not raw scores; instead, they are based on a common scale.
- f. Refer to the syllabuses for each subject (given on AIEJ's web site, http://www.aiej.or.jp/examination/efjuafis_syllabus.html) for the range of questions in the examination.

Examination Details

1. Number of applicants and examinees by site

Examination Site		Applicants	Examinees	
Japan	Hokkaido		123	117
	Tohoku	Miyagi	172	160
		Gunma	65	63
	Kanto	Saitama	744	669
		Chiba	447	415
		Tokyo	5,943	5,366
		Kanagawa	691	653
	Chubu	Ishikawa	43	40
		Aichi	631	588
	Kinki	Kyoto	546	520
		Osaka	977	913
		Hyogo	756	719
	Chugoku	Hiroshima	269	252
	Kyushu	Fukuoka	1,171	1,127
	Okinawa		33	31
Total in Japan		12,613	11,633	
Overseas	Indonesia	Jakarta	327	151
		Surabaya	178	107
	Malaysia	Kuala Lumpur	52	42
	Mongolia	Ulaanbaatar	59	43
	Philippines	Manila	13	10
	Singapore		10	9
	South Korea	Seoul	367	290
		Busan	160	121
	Taiwan	Taipei	1,224	1,014
	Thailand	Bangkok	129	90
	Vietnam	Hanoi	37	24
	Total overseas		2,556	1,901
Grand total		15,169	13,534	

Note: The number of applicants and examinees who selected the English version of EJU are as follows.

	Applicants	Examinees
Japan	83	71
Overseas	723	437
Total	806	508

2. Examination venues

Japan	Hokkaido	Hokkaido University	
	Miyagi	Tohoku University (Kawauchi Campus)	
	Gunma	Maebashi Kyoai Gakuen College	
	Saitama	Tokyo International University (The first Campus)	
	Chiba	Nihonbashi Gakkan University	
	Tokyo	Kokushikan University (Setagaya Campus)	
		Komazawa University (Komazawa Campus)	
		Tokyo Metropolitan University	
	Kanagawa	Tsurumi University	
	Ishikawa	Kanazawa Seiryō University	
	Aichi	Chukyo University (Nagoya Campus)	
	Kyoto	Kyoto Sangyo University	
	Osaka	Osaka Kyoiku University (Kashiwara Campus)	
	Hyogo	Kobe University of Mercantile Marine	
	Hiroshima	Hiroshima University of Economics	
	Fukuoka	Seinan Gakuin University	
	Okinawa	Okinawa University	
	Overseas	Indonesia (Jakarta)	University of Indonesia
		(Surabaya)	Nihon-Indonesia Culture Exchange Center
Malaysia (Kuala Lumpur)		Institut Bahasa Teikyo	
Mongolia (Ulaanbaatar)		Mongolia-Japan Center	
Philippines (Manila)		De La Salle University-College of Saint Benilde	
Singapore		The Japanese Cultural Society, Singapore	
South Korea (Seoul)		Pungmoon Girl's High School	
(Busan)		Busan Design High School	
Taiwan (Taipei)		The Language, Training & Testing Center	
		National Taipei Teachers College	
Thailand (Bangkok)		Old Japan Students' Association, Thailand	
Vietnam (Hanoi)	Foreign Trade University (Vietnam-Japan Cooperation Center)		

3. Number of examinees by nation/region of origin (Japan)

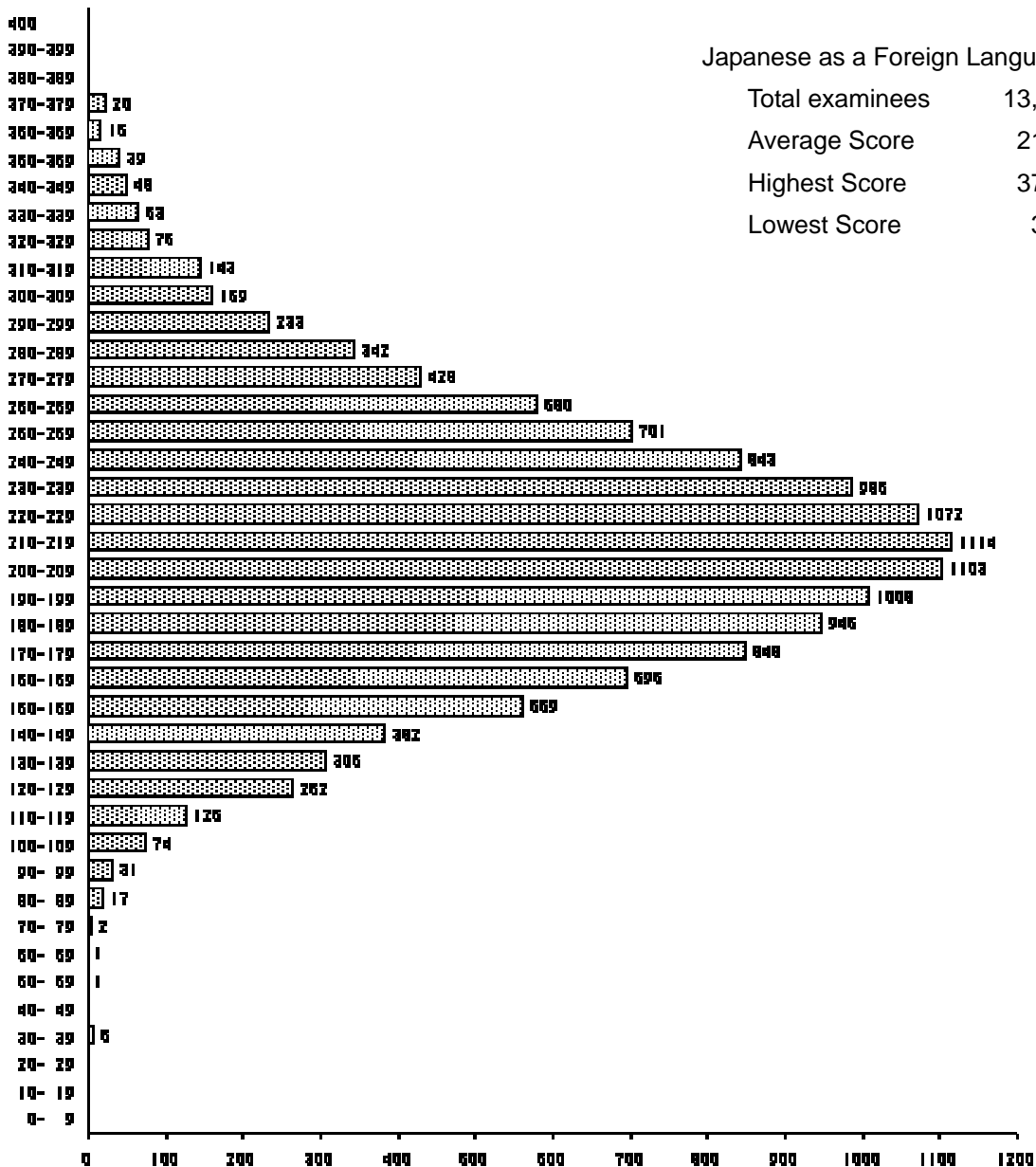
Country/Region	Examinees	Country/Region	Examinees
China	10,182	Chili	1
South Korea	873	Colombia	1
Taiwan	173	Honduras	1
Vietnam	67	Brunei	1
Thailand	45	Pakistan	1
Sri Lanka	38	Bulgaria	1
Indonesia	36	Czech Republic	1
Mongolia	32	France	1
Nepal	30	Germany	1
Malaysia	26	Greece	1
Myanmar	19	Portugal	1
Bangladesh	13	Sweden	1
United Kingdom	13	Switzerland	1
India	12	Israel	1
U.S.A.	8	Saudi Arabia	1
Russia	8	Others	1
Philippines	6		
Canada	5		
Iran	5		
Peru	3		
Cambodia	3		
Laos	3		
Australia	3		
Brazil	2		
Singapore	2		
Finland	2		
Poland	2		
Turkey	2		
Morocco	1		
Senegal	1		
Tanzania	1	Total 47 Countries / Regions	11,633
Tunisia	1		

List of Average Scores by Subject

Subject (Score Range)		Examinees	Average Score	Highest Score	Lowest Score	Standard Dev.
Japanese as a Foreign Language	Listening (0-120)	13,228	62.7 (52.3%)	111 (92.5%)	4 (3.3%)	16.2 (13.5%)
	Listening and Reading (0-120)		61.5 (51.3%)	114 (95.0%)	7 (5.8%)	16.6 (13.8%)
	Reading (0-160)		88.6 (55.4%)	153 (95.6%)	20 (12.5%)	23.3 (14.6%)
	Total (0-400)		212.8 (53.2%)	378 (94.5%)	31 (7.8%)	48.4 (12.1%)
	Writing (0-6)		3.9 (65.0%)	6 (100.0%)	0 (0.0%)	1.4 (23.3%)
Science	Physics (0-100)	1,582	50.5 (50.5%)	83 (83.0%)	14 (14.0%)	10.9 (10.9%)
	Chemistry (0-100)	1,693	49.9 (49.9%)	87 (87.0%)	22 (22.0%)	12.0 (12.0%)
	Biology (0-100)	520	55.3 (55.3%)	84 (84.0%)	19 (19.0%)	12.5 (12.5%)
Japan and the World (0-200)		7,391	117.5 (58.8%)	188 (94.0%)	12 (6.0%)	36.2 (18.1%)
Mathematics	Course 1 (0-200)	5,977	101.7 (50.9%)	189 (94.5%)	48 (24.0%)	25.3 (12.7%)
	Course 2 (0-200)	1,586	110.9 (55.5%)	179 (89.5%)	46 (23.0%)	18.7 (9.4%)

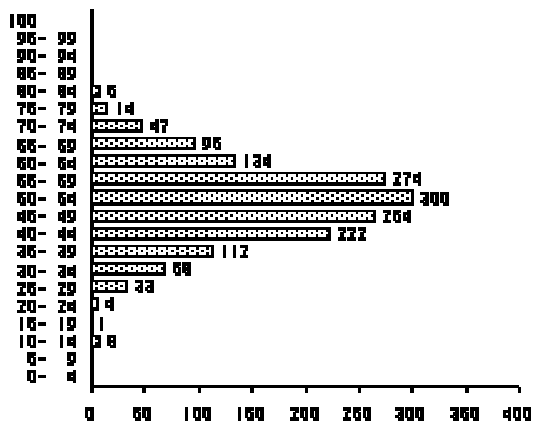
Note: Percentages indicate the ratio to a perfect score.

Score Distribution



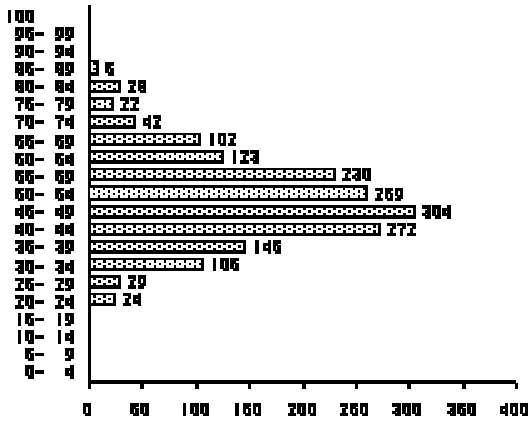
Japanese as a Foreign Language

Total examinees 13,228
 Average Score 212.8
 Highest Score 378.0
 Lowest Score 31.0



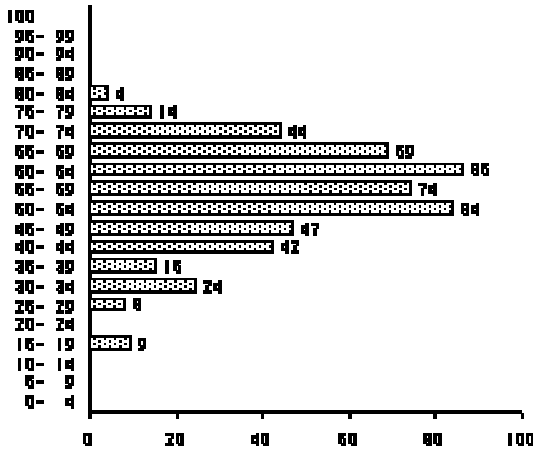
Physics

Total examinees 1,582
 Average Score 50.5
 Highest Score 83.0
 Lowest Score 14.0



Chemistry

Total examinees	1,693
Average Score	49.9
Highest Score	87.0
Lowest Score	22.0



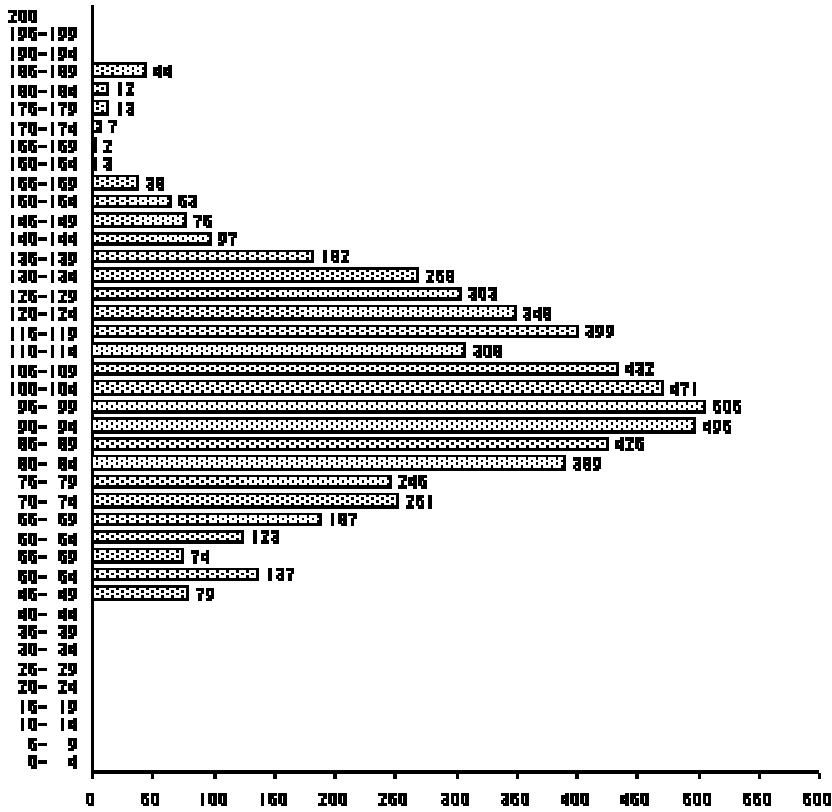
Biology

Total examinees	520
Average Score	55.3
Highest Score	84.0
Lowest Score	19.0



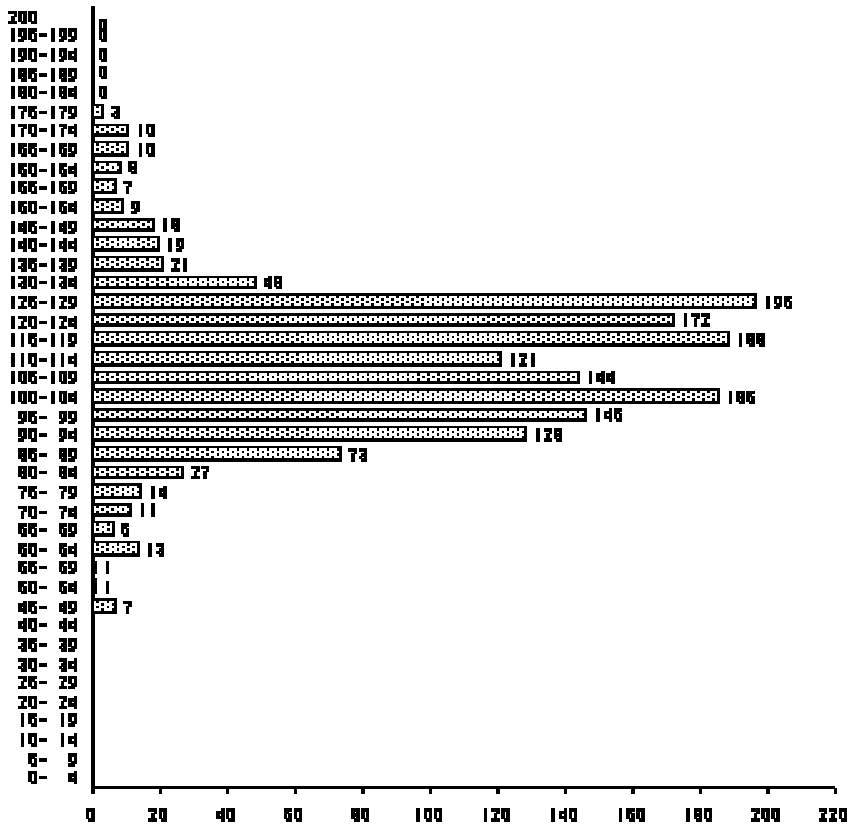
Japan and the World

Total examinees	7,391
Average Score	117.5
Highest Score	188.0
Lowest Score	12.0



Mathematics (Course 1)

Total examinees	5,977
Average Score	101.7
Highest Score	189.0
Lowest Score	48.0



Mathematics (Course 2)

Total examinees	1,586
Average Score	110.9
Highest Score	179.0
Lowest Score	46.0