

Outline of Results

2003 Examination for Japanese University Admission for International Students (2nd Session)

Contents

1. Guidelines for the 2003 Examination for Japanese University Admission for International Students (EJU)
2. Examination Details
3. List of Average Scores by Subject
4. Score Distribution

Association of International Education, Japan

Guidelines for the 2003 Examination for Japanese University Admission for International Students (EJU)

1. Purpose

This examination is used to evaluate the Japanese language proficiency and the basic academic abilities of international students who wish to study at Japanese universities at the undergraduate level.

2. Examination Administrator

The Association of International Education, Japan, administers the examination with the cooperation of the Ministry of Education, Culture, Sports, Science and Technology, the Ministry of Foreign Affairs, Japanese universities, and affiliated institutions in Japan and overseas.

3. General Description of the Examination

(1) Eligibility:

International students who wish to study at Japanese universities

(2) Date of exam:

1st Session June 15, 2003 (Sunday)

2nd Session November 16, 2003 (Sunday)

(3) Venues:

Japan: Hokkaido, Miyagi, Gunma, Saitama, Chiba, Tokyo, Kanagawa, Ishikawa, Aichi, Kyoto or Shiga, Osaka, Hyogo, Hiroshima or Okayama, Fukuoka, and Okinawa

Overseas: Indonesia (Jakarta and Surabaya), Malaysia (Kuala Lumpur), Mongolia (Ulaanbaatar), Philippines (Manila), Singapore, South Korea (Seoul and Busan), Taiwan (Taipei), Thailand (Bangkok) and Vietnam (Hanoi and Ho Chi Minh City)

Note: The EJU will start to be held in Ho Chi Minh City, Vietnam with the 2nd Session.

(4) Subjects:

Depending on the university they wish to enter and the course of study they wish to pursue, the examinees select the subject tests that they will take from the following.

Subject	Purpose	Length	Score Range
Japanese as a Foreign Language	Measurement of ability to study in Japanese at the university level. (academic Japanese)	120 minutes	0-400
Science	Measurement of the basic academic skills in science (Physics, Chemistry, and Biology) necessary for studying in a science department of a Japanese university	80 minutes	0-200
Japan and the World	Measurement of the basic academic skills in liberal arts, particularly thinking and logical abilities, necessary for studying at Japanese universities.	80 minutes	0-200
Mathematics	Measurement of the basic academic skills in mathematics necessary for studying at Japanese universities.	80 minutes	0-200

[Remarks]

- a. The test in Japanese as a Foreign Language consists of writing, listening comprehension, listening and reading comprehension, and reading comprehension. The score range listed above does not include the writing section, which is scored, based on the standards for grammatical and logical abilities. Examinees' writing section scores are indicated in their examination score reports.
- b. In the science test, examinees select two subjects from physics, chemistry and biology, depending on the requirements of the university they want to enter and the course of study they want to pursue.
- c. In the mathematics test, examinees select Course 1 if they plan to enter liberal arts programs or science programs requiring comparatively less knowledge of mathematics, or Course 2 if they plan to enter programs requiring advanced knowledge of mathematics.
- d. Examinees may not choose to take both the Science test and the Japan and the World test.
- e. The score ranges listed above are not raw scores; instead, they are based on a common scale.
- f. Refer to the syllabuses for each subject (given on AIEJ's web site, http://www.aiej.or.jp/examination/efjuafis_syllabus.html) for the range of questions in the examination.

(5) Examination languages option:

The EJU is available in Japanese or English, except for the Japanese as a Foreign Language test, which is given in Japanese only. EJU applicants need to indicate their preference in the application.

(6) Answering format:

All questions use a multiple-choice format, except for writing section of the Japanese as a Foreign Language test.

4. Application Procedure, etc.

(1) Application Procedure

a. Application form: As prescribed

b. Examination fee: Japan	One subject:	¥ 5,200 (excluding tax)
	Two or three subjects:	¥10,400 (excluding tax)
Overseas	Indonesia	IDR 10,000
	Malaysia	MYR 55
	Mongolia	MNT 10,000
	Philippines	PHP 250
	Singapore	SGD 36
	South Korea	KRW 20,000
	Taiwan	TWD 1,200
	Thailand	THB 300
	Vietnam	VTD 65,000

c. Application period: Japan

1st Session: From February 24 (Monday) to March 20, 2003(Thursday)
(Application must be postmarked by March 20.)

2nd Session: From July 7 (Monday) to August 1, 2003 (Friday)
(Application must be postmarked by August 1.)

Overseas Same as in Japan

d. Applications: Japan The applications should be submitted to Testing Division, Programs and Activities Department, Association of International Education, Japan.

Overseas The applications should be submitted to the Overseas Representatives in each country or region.

(2) EJU Bulletin

The details of the application procedure, and other information will be released in the "Bulletin of the 2003 Examination for Japanese University Admission for International Students(EJU)."

Bulletin Vendors: Japan The bulletin is scheduled to go on sale at major bookstores throughout Japan on February 24, 2003 (Monday). The price is ¥510 (including tax) per copy.

Overseas To be decided through consultation with the Overseas Representative in each country or region.

(3) Sending of Examination Voucher

Japan Examination vouchers will be sent on the following dates in response to applications received.

1st Session: May 23, 2003 (Friday) (tentative)

2nd Session: October 24, 2003 (Friday) (tentative)

Overseas To be decided through consultation with the Overseas Representative in each country or region.

5. Score Reports and Notification

(1) Score Reports to Examinees

Score reports will be sent to examinees on the following dates (tentative).

1st Session: July 22, 2003 (Tuesday)

2nd Session: December 22, 2003 (Monday)

(2) Notification to Universities

AIEJ will begin responding to score inquiries from universities in late July 2003 for 1st session scores, in late December 2003 for 2nd session scores.

Inquires:	Association of International Education, Japan Programs and Activities Department, Testing Division 4-5-29 Komaba, Meguro-ku, Tokyo 153-8503, Japan Telephone: 03-5454-5338 Fax: 03-5454-5339E-mail: eju@aiej.or.jp
-----------	---

Examination Details

1. Number of applicants and examinees by site

Examination Site		Applicants	Examinees	
Japan	Hokkaido		259	229
	Tohoku	Miyagi	445	401
		Gunma	185	157
	Kanto	Saitama	1,241	1,034
		Chiba	1,029	896
		Tokyo	10,850	8,974
		Kanagawa	1,203	978
	Chubu	Ishikawa	196	184
		Aichi	1,409	1,272
	Kinki	Shiga	1,128	1,025
		Osaka	2,122	1,817
		Hyogo	760	629
	Chugoku	Okayama	776	647
	Kyushu	Fukuoka	2,124	1,950
	Okinawa		83	77
Total in Japan		23,810	20,270	
Overseas	Indonesia	Jakarta	691	428
		Surabaya	118	74
	Malaysia	Kuala Lumpur	70	69
	Mongolia	Ulaanbaatar	41	28
	Philippines	Manila	21	15
	Singapore		7	5
	South Korea	Seoul	320	218
		Busan	162	115
	Taiwan	Taipei	260	182
	Thailand	Bangkok	118	72
	Vietnam	Hanoi	70	44
		Ho Chi Minh City	97	57
	Total overseas		1,975	1,307
Grand total		25,785	21,577	

Note: The number of applicants and examinees who selected the English version of EJU are as follows.

	Applicants	Examinees
Japan	169	142
Overseas	1,057	670
Total	1,226	812

2. Examination venues

Japan	Hokkaido	Hokkaido Bunkyo University	
	Miyagi	Sendai College	
	Gunma	Gunma University (Aramaki Campus)	
	Saitama	Dokkyo University	
	Chiba	Chiba University (Nishi-Chiba Campus)	
	Tokyo	Takachiho University	
		Takushoku University	
		Mejiro University (Shinjuku Campus)	
		Waseda University	
		The University of Electro-communications	
		Obirin University	
		Kyorin University (Hachioji Campus)	
		Meisei University (Hino Campus)	
		Kanagawa	Yokohama City University (Kanazawa-hakkei Campus)
		Ishikawa	Hokuriku University
	Aichi	Nagoya Institute of Technology	
	Shiga	Ritsumeikan University (Biwako-Kusatsu Campus)	
	Osaka	Osaka University (Toyonaka Campus)	
	Hyogo	Sonoda Women's University	
	Okayama	Kurashiki University of Science and the Arts	
	Mimasaka College		
Fukuoka	Kyushu University (Ropponmatsu Campus)		
Okinawa	Okinawa Christian Junior College		
Overseas	Indonesia (Jakarta)	University of Indonesia	
	(Surabaya)	Nihon-Indonesia Culture Exchange Center	
	Malaysia (Kuala Lumpur)	Institut Bahasa Teikyo	
	Mongolia (Ulaanbaatar)	Mongolia-Japan Center	
	Philippines (Manila)	De La Salle University-College of Saint Benilde	
	Singapore	The Japanese Cultural Society, Singapore	
	South Korea (Seoul)	Pungmoon Girl's High School	
	(Busan)	Busan Design High School	
	Taiwan (Taipei)	The Language, Training & Testing Center	
	Thailand (Bangkok)	Old Japan Students' Association, Thailand	
	Vietnam (Hanoi)	Foreign Trade University (Vietnam-Japan Cooperation Center)	
	(Ho Chi Minh City)	University of Natural Science & Humanities, HCMC	

3. Number of examinees by nation/region of origin (Japan)

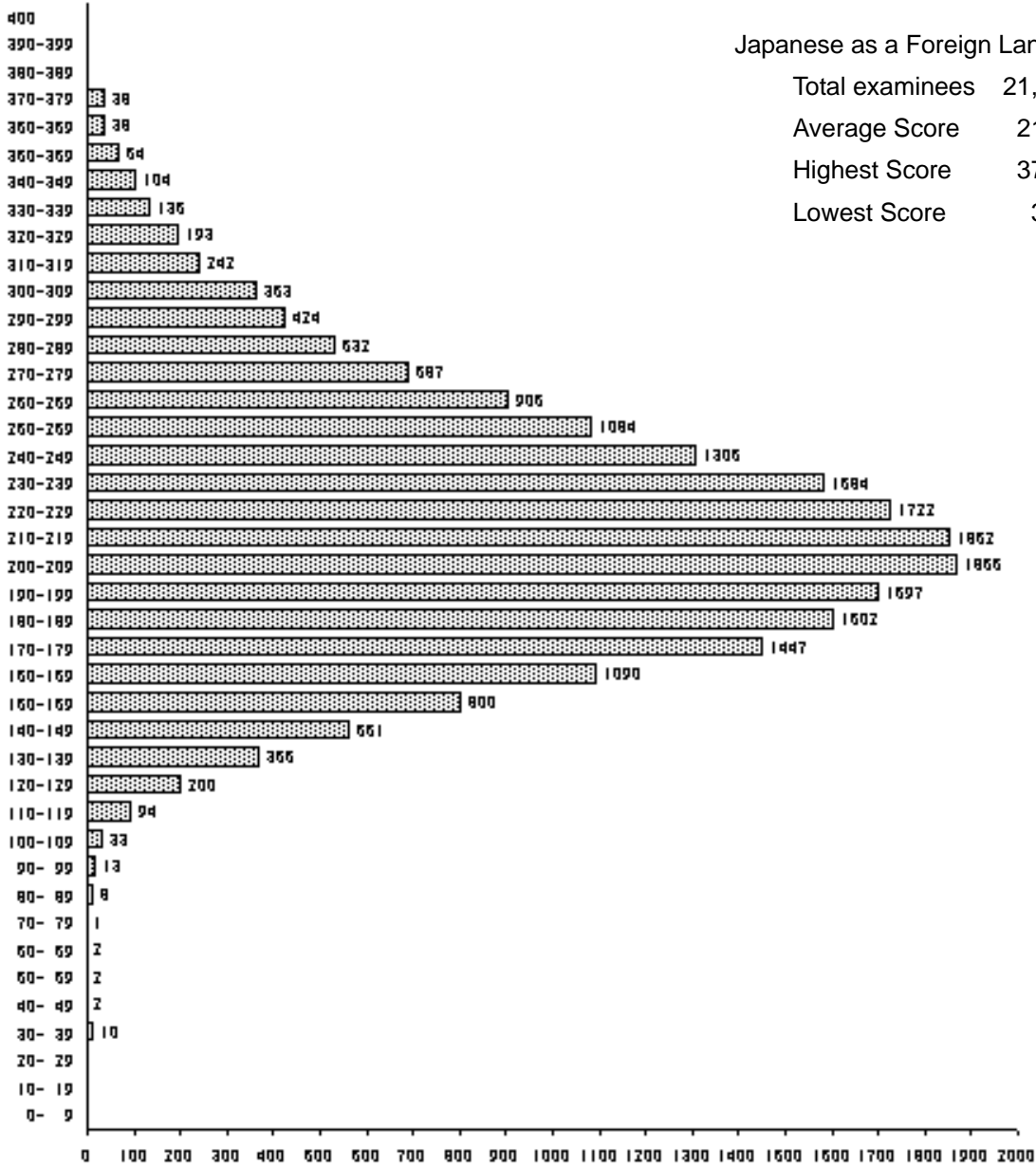
Country/Region	Examinees	Country/Region	Examinees
China	17,073	Belgium	3
South Korea	1,815	France	3
Taiwan	403	Ukraine	3
Vietnam	160	Pakistan	2
Malaysia	153	Colombia	2
Thailand	80	Mexico	2
Sri Lanka	80	Greece	2
Indonesia	75	Portugal	2
Myanmar	60	Slovak Republic	2
Bangladesh	48	Uzbekistan	2
Nepal	54	Fiji Islands	2
Mongolia	46	Cote d'Ivoire	2
United Kingdom	31	Morocco	2
Russia	15	Chili	1
India	14	Israel	1
U.S.A.	13	Saudi Arabia	1
Philippines	11	Finland	1
Canada	10	Sweden	1
Australia	10	Bulgaria	1
Cambodia	9	Italy	1
Turkey	9	Switzerland	1
Iran	8	Yugoslavia	1
Singapore	6	Turkmenistan	1
Laos	5	Angora	1
North Korea	5	Kenya	1
Peru	5	Mali	1
Argentina	5	Senegal	1
Germany	4	Tanzania	1
Poland	4	Congo [Kinshasa]	1
New Zealand	4	Others	4
Brazil	3	Total 61 Countries / Regions	20,270
Ecuador	3		

List of Average Scores by Subject

Subject (Score Range)		Examinees	Average Score	Highest Score	Lowest Score	Standard Dev.
Japanese as a Foreign Language	Listening (0-120)	21,066	64.5 (53.8%)	111 (92.5%)	4 (3.3%)	16.1 (13.4%)
	Listening and Reading (0-120)		63.4 (52.8%)	114 (95.0%)	7 (5.8%)	16.0 (13.3%)
	Reading (0-160)		89.0 (55.6%)	153 (95.6%)	20 (12.5%)	22.5 (14.1%)
	Total (0-400)		216.9 (54.2%)	378 (94.5%)	31 (7.8%)	47.3 (11.8%)
	Writing (0-6)		4.2 (70.0%)	6 (100.0%)	0 (0.0%)	1.3 (21.7%)
Science	Physics (0-100)	2,478	55.9 (55.9%)	90 (90.0%)	14 (14.0%)	13.1 (13.1%)
	Chemistry (0-100)	2,467	52.6 (52.6%)	87 (87.0%)	22 (22.0%)	13.5 (13.5%)
	Biology (0-100)	801	56.1 (56.1%)	86 (86.0%)	19 (19.0%)	12.7 (12.7%)
Japan and the World (0-200)		11,336	118.0 (59.0%)	189 (94.5%)	12 (6.0%)	34.5 (17.3%)
Mathematics	Course 1 (0-200)	8,743	101.5 (50.8%)	190 (95.0%)	48 (24.0%)	26.4 (13.2%)
	Course 2 (0-200)	2,520	109.1 (54.6%)	179 (89.5%)	46 (23.0%)	21.1 (10.6%)

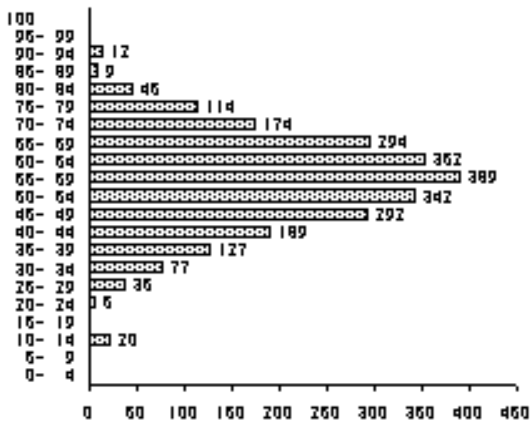
Note: Percentages indicate the ratio to a perfect score.

Score Distribution



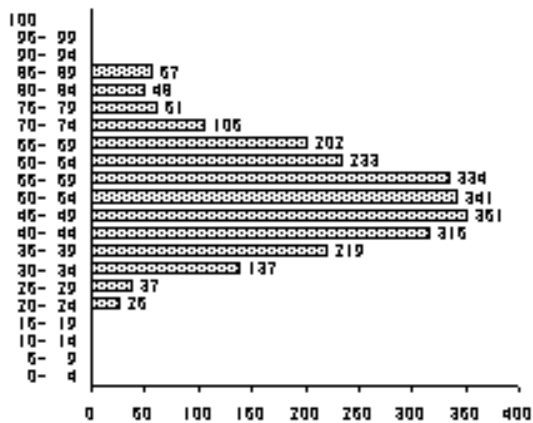
Japanese as a Foreign Language

Total examinees 21,066
 Average Score 216.9
 Highest Score 378.0
 Lowest Score 31.0



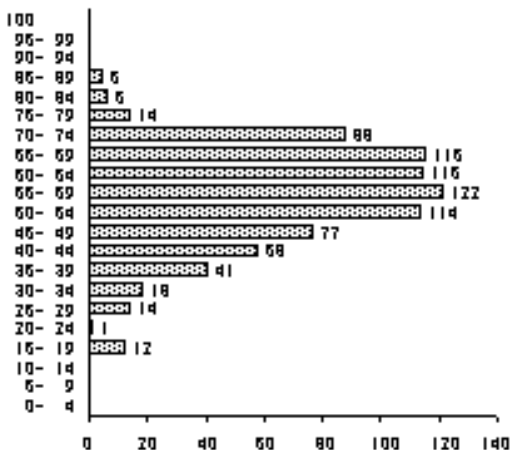
Physics

Total examinees 2,478
 Average Score 55.9
 Highest Score 90.0
 Lowest Score 14.0



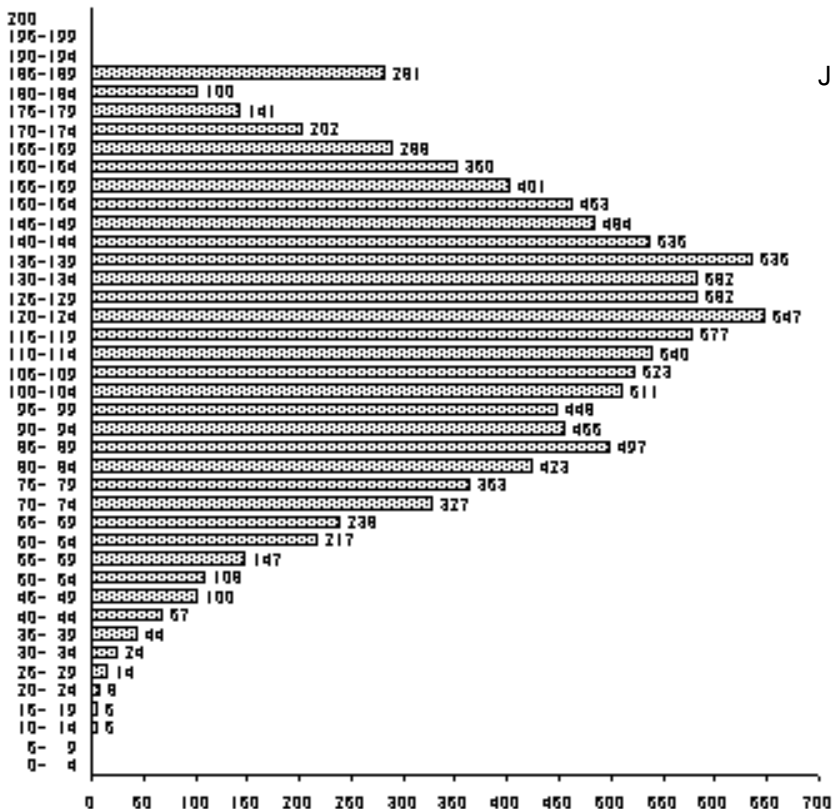
Chemistry

Total examinees	2,467
Average Score	52.6
Highest Score	87.0
Lowest Score	22.0



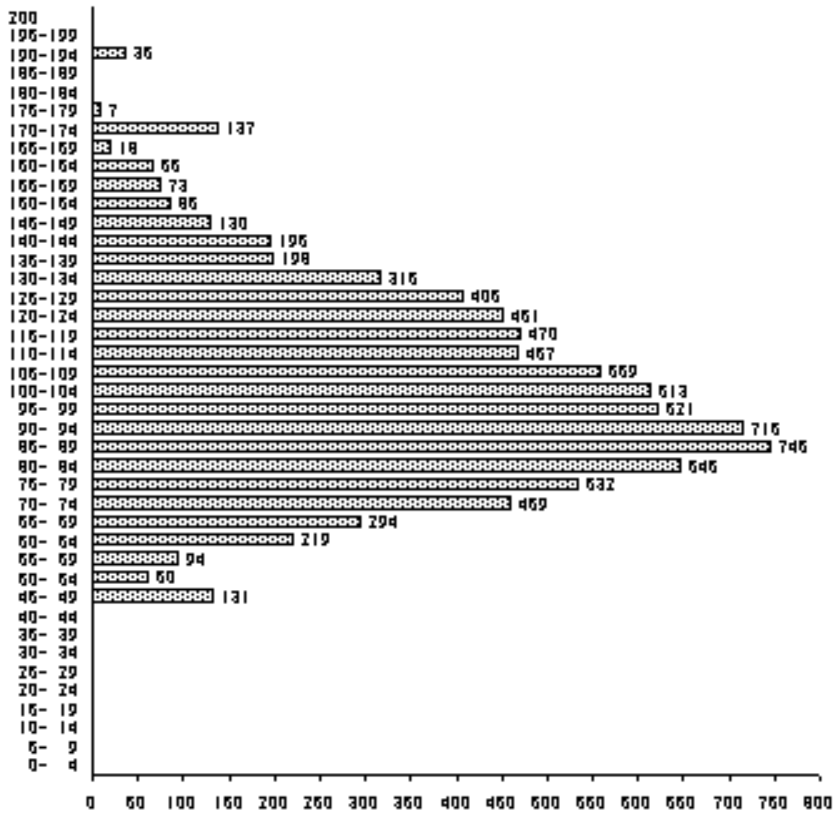
Biology

Total examinees	801
Average Score	56.1
Highest Score	86.0
Lowest Score	19.0



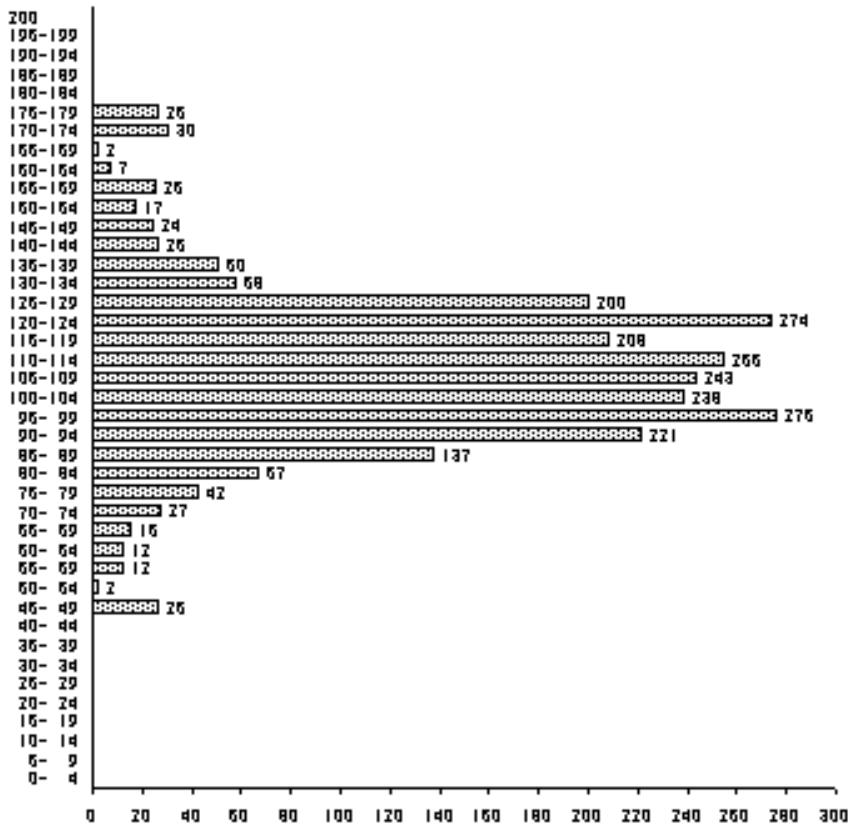
Japan and the World

Total examinees	11,336
Average Score	118.0
Highest Score	189.0
Lowest Score	12.0



Mathematics (Course 1)

Total examinees	8,743
Average Score	101.5
Highest Score	190.0
Lowest Score	48.0



Mathematics (Course 2)

Total examinees	2,520
Average Score	109.1
Highest Score	179.0
Lowest Score	46.0