

Outline of Results

2004 Examination for Japanese University Admission for International Students (1st Session)

Contents

1. Guidelines for the 2004 Examination for Japanese University Admission for International Students (EJU)
2. Examination Details
3. List of Average Scores by Subject
4. Score Distribution

Japan Student Services Organization

Guidelines for the 2004 Examination for Japanese University Admission for International Students (EJU)

1. Purpose

This examination is used to evaluate the Japanese language proficiency and the basic academic abilities of international students who wish to study at Japanese universities at the undergraduate level.

2. Examination Administrator

Association of International Education, Japan (is changing to Japan Student Services Organization in April 2004) administers the examination with the cooperation of the Ministry of Education, Culture, Sports, Science and Technology, the Ministry of Foreign Affairs, Japanese universities, and affiliated institutions in Japan and overseas.

3. General Description of the Examination

(1) Eligibility:

International students who wish to study at Japanese universities

(2) Date of exam:

1st Session June 20, 2004 (Sunday)

2nd Session November 14, 2004 (Sunday)

* Note: In Indonesia, Malaysia, and Singapore only, the 2nd session will be held on November 7, 2004

(3) Venues:

Japan: Hokkaido, Miyagi, Gunma, Saitama, Chiba, Tokyo, Kanagawa, Ishikawa or Fukui, Aichi, Kyoto, Osaka, Hyogo, Okayama or Hiroshima, Fukuoka and Okinawa

Overseas: Indonesia (Jakarta and Surabaya), Malaysia (Kuala Lumpur), Mongolia (Ulaanbaatar), Myanmar (Yangon), Philippines (Manila), Singapore, South Korea (Seoul and Busan), Taiwan (Taipei), Thailand (Bangkok) and Vietnam (Hanoi and Ho Chi Minh City)

(4) Subjects:

Depending on the university they wish to enter and the course of study they wish to pursue, the examinees select the subject tests that they will take from the following.

Subject	Purpose	Length	Score Range
Japanese as a Foreign Language	Measurement of ability to study in Japanese at the university level. (academic Japanese)	120 minutes	0-400 scores
Science	Measurement of basic academic ability in science (Physics, Chemistry, and Biology) as needed to study in a science department of a Japanese university	80 minutes	0-200 scores
Japan and the World	Measurement of the basic academic skills in required in liberal arts, particularly thinking and logical abilities, for studying at Japanese universities.	80 minutes	0-200 scores
Mathematics	Measurement of the basic academic skills required in mathematics for studying at Japanese universities.	80 minutes	0-200 scores

[Remarks]

The test in Japanese as a Foreign Language consists of writing, reading comprehension, listening comprehension, and listening and reading comprehension. The score range listed above does not include the writing section, which will be scored and scores indicated, based on the standards for grammatical and logical abilities.

In the science area, depending on the university they want to enter and the course of study they want to pursue, examinees have to select two subjects from physics, chemistry and biology.

In the mathematics area, depending on the university they want to enter and the course of study they want to pursue, examinees have to select either of Course 1 for liberal arts faculties or science faculties where comparatively less mathematics is required, or Course 2 for faculties where a higher level mathematics is required.

Examinees may not choose to take both the Science test and the Japan and the World test.

The score listed above will not given in the form of the raw score but on a common scale.

Refer to the syllabuses for each subject.

(5) Languages for the Questions:

Since the questions can be written in Japanese or English, the examinee should notify which they prefer in the application. (Japanese as a Foreign Language test will be given only in Japanese.)

(6) Answering method:

Multiple-choice method (Mark sheet) (the Japanese as a Foreign Language test will include a writing section).

4. Application Procedures, etc.

(1) Application Procedure

Application form: As prescribed

Examination fee: Japan	One subject:	¥5,460 (including tax)
	Two subjects or more:	¥10,920 (including tax)
Overseas	Indonesia	IDR 40,000
	Malaysia	MYR 60
	Mongolia	MNT 10,000
	Myanmar	FEC 15
	Philippines	PHP 250
	Singapore	SGD 36
	South Korea	
	One subject	KRW 30,000
	Two subjects or more	KRW 50,000
	Taiwan	
	One subject	TWD 1,200
	Two subjects or more	TWD 1,600
	Thailand	THB 300
	Vietnam	VTD 70,000

Application period: Japan

(1st Session) From February 23 (Monday) to March 19, 2004 (Friday)
(The application must be postmarked no later than March 19.)

(2nd Session) From July 5 (Monday) to July 30, 2004 (Friday)
(The application must be postmarked no later than July 30.)

Overseas Same as in Japan

Applications: Japan The applications should be submitted to Testing Division, Programs and Activities Department, Association of International Education, Japan for 1st Session, to EJU Division, Japan Student Services Organization for 2nd Session.

Overseas The applications should be submitted to the Overseas Representatives in each country or region.

(2) Instructions for the Examination

The details of the application procedures, and so forth, will be released in the "Bulletin of 2004 Examination for Japanese University Admission for International Students".

Bulletin Vendors: Japan Bulletin is scheduled to go on sale at major bookstores throughout Japan on February 23, 2004 (Monday). Cost is ¥510 (including tax) per copy.

Overseas To be decided through consultation with Overseas Representative in each country or region.

(3) Forwarding of Examination Voucher

Japan For the application form received, Examination Voucher will be forwarded
(1st Session) May 21, 2004 (Friday) (tentative)
(2nd Session) October 22, 2004 (Friday) (tentative)

Overseas To be decided through consultation with Overseas Representative in each country or region.

5. Score report

(1) Score report to Examinees

Score report will be sent

(1st Session) July 23, 2004 (Friday)

(2nd Session) December 20, 2004 (Monday)

(2) Notification to Universities

AIEJ will send universities a score examination report, and begin responding to score of 1st Session inquiries from universities from late July 2004, for 2nd Session from late December 2004.

Inquires: Association of International Education, Japan (until March 31, 2004)
Programs and Activities Department,
Testing Division
Japan Student Services Organization (from April 1, 2004)
Testing Division
4-5-29 Komaba, Meguro-ku, Tokyo 153-8503, Japan
Telephone: 03-6407-7457 Fax: 03-6407-7462
E-mail: eju@aiej.or.jp

Examination Details

1. Number of applicants and examinees by site

Examination Site		Applicants	Examinees	
Japan	Hokkaido		247	227
	Tohoku	Miyagi	212	203
		Gunma	131	127
	Kanto	Saitama	713	656
		Chiba	923	864
		Tokyo	7,720	7,154
		Kanagawa	1,052	967
	Chubu	Ishikawa	119	111
		Aichi	807	756
	Kinki	Kyoto	690	659
		Osaka	1,364	1,279
		Hyogo	852	801
	Chugoku	Okayama	461	432
	Kyushu	Fukuoka	1,424	1,357
	Okinawa		98	98
Total in Japan		16,813	15,691	
Overseas	Indonesia	Jakarta	273	161
		Surabaya	128	93
	Malaysia	Kuala Lumpur	48	39
	Mongolia	Ulaanbaatar	63	52
	Myanmar	Yangon	45	38
	Philippines	Manila	16	7
	Singapore		10	10
	South Korea	Seoul	419	340
		Busan	108	88
	Taiwan	Taipei	1,357	1,142
	Thailand	Bangkok	341	201
	Vietnam	Hanoi	44	34
		Ho Chi Minh City	81	63
	Total overseas		2,933	2,268
Grand total		19,746	17,959	

Note: The number of applicants and examinees who selected the English version of EJU are as follows.

	Applicants	Examinees
Japan	110	102
Overseas	830	543
Total	940	645

2. Examination venues

Japan	Hokkaido	Sapporo University	
	Miyagi	Miyagi University of Education	
	Gunma	Takasaki City University of Economics	
	Saitama	Josai University	
	Chiba	Reitaku University	
	Tokyo		Gakushuin University (Mejiro Campus)
			Kokushikan University (Setagaya Campus)
			College of Law, Nihon University
			Hosei University (Ichigaya Campus)
			Soka University
			Kaetsu University
		Kanagawa	Musashi Institute of Technology (Yokohama Campus)
		Ishikawa	Kanazawa Seiryō University
		Aichi	Aichi Gakuin University (Nissin Campus)
		Kyoto	Kyoto Institute of Technology (Matsugasaki Campus)
	Osaka	Osaka University of Foreign Studies	
	Hyogo		Eichi University
			Kobe Shinwa Women's University
		Okayama	Okayama University of Science
	Fukuoka	Kyushu Institute of Technology (Tobata Campus)	
Okinawa	Okinawa Prefectural College of Nursing		
Overseas	Indonesia (Jakarta)	University of Indonesia	
		(Surabaya) Nihon-Indonesia Culture Exchange Center	
	Malaysia (Kuala Lumpur)	Institut Bahasa Teikyo	
	Mongolia (Ulaanbaatar)	Mongolia-Japan Center	
	Myanmar (Yangon)	Summit Parkview Hotel	
	Philippines (Manila)	De La Salle University-College of Saint Benilde	
	Singapore	The Japanese Cultural Society, Singapore	
	South Korea (Seoul)	Kyunggi High School	
		(Busan) Busan Design High School	
	Taiwan (Taipei)	The Language, Training & Testing Center	
		National Taipei Teachers College	
		Ho Ping High School	
	Thailand (Bangkok)	Old Japan Students' Association, Thailand	
	Vietnam (Hanoi)	Foreign Trade University (Vietnam-Japan Cooperation Center)	
		(Ho Chi Minh City) University of Social Sciences and Humanities, Ho Chi Minh City	

3. Number of examinees by nation/region of origin (Japan)

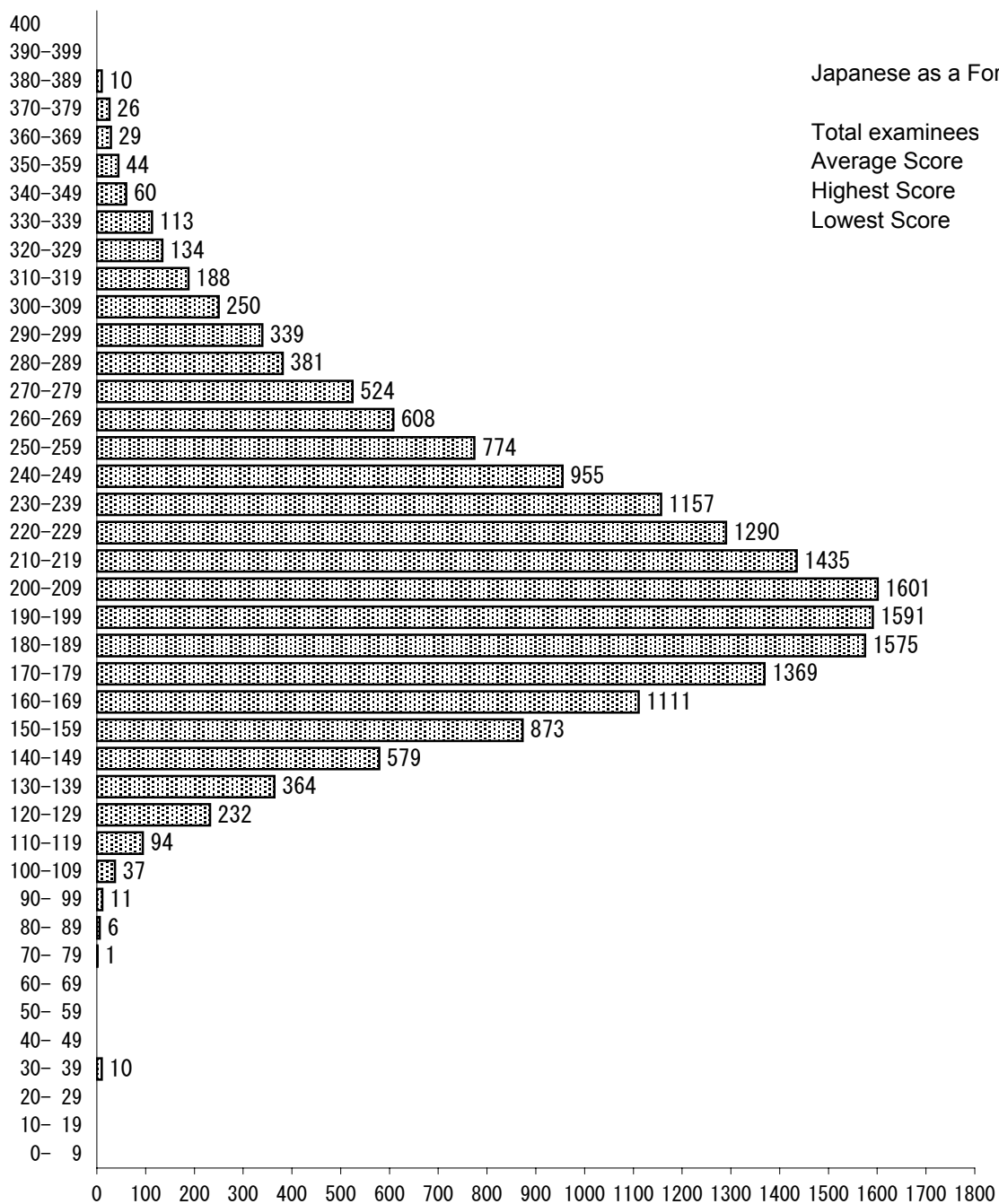
Country/Region	Examinees	Country/Region	Examinees
China	13,690	Germany	1
South Korea	1,066	Belgium	1
Taiwan	192	Portugal	1
Vietnam	152	Colombia	1
Nepal	82	Venezuela	1
Thailand	78	Mexico	1
Mongolia	74	Israel	1
Indonesia	73	Iraq	1
Sri Lanka	64	Turkey	1
Myanmar	51	Uzbekistan	1
Bangladesh	36	Kyrgyz	1
Malaysia	28	Ghana	1
United Kingdom	21	Democratic Republic of Congo	1
Philippines	9	Tanzania	1
Russia	8	Mali	1
Cambodia	7	Others	2
U.S.A.	7		
Canada	6		
Peru	5		
India	4		
Ukraine	4		
Australia	3		
France	2		
Sweden	2		
Brazil	2		
Iran	2		
Singapore	1		
Pakistan	1		
Laos	1		
Croatia	1		
Spain	1	Total 47 Countries / Regions	15,691
Slovak Republic	1		

List of Average Scores by Subject

Subject (Score Range)		Examinees	Average Score	Highest Score	Lowest Score	Standard Dev.
Japanese as a Foreign Language	Listening (0-120)	17,771	61.6 (51.3%)	117 (97.5%)	7 (5.8%)	16.4 (13.7%)
	Listening and Reading (0-120)		61.1 (50.9%)	118 (98.3%)	9 (7.5%)	15.7 (13.1%)
	Reading (0-160)		88.4 (55.3%)	160 (100.0%)	22 (13.8%)	23.1 (14.4%)
	Total (0-400)		211.1 (52.8%)	388 (97.0%)	38 (9.5%)	47.4 (11.9%)
	Writing (0-6)		3.7 (61.7%)	6 (100.0%)	0 (0.0%)	1.5 (25.0%)
Science	Physics (0-100)	1,747	52.1 (52.1%)	86 (86.0%)	17 (17.0%)	12.8 (12.8%)
	Chemistry (0-100)	1,835	49.2 (49.2%)	94 (94.0%)	20 (20.0%)	11.3 (11.3%)
	Biology (0-100)	793	52.0 (52.0%)	84 (84.0%)	11 (11.0%)	13.8 (13.8%)
Japan and the World (0-200)		9,568	121.1 (60.6%)	198 (99.0%)	8 (4.0%)	34.6 (17.3%)
Mathematics	Course 1 (0-200)	7,618	100.0 (50.0%)	189 (94.5%)	42 (21.0%)	23.9 (12.0%)
	Course 2 (0-200)	1,826	105.7 (52.9%)	192 (96.0%)	45 (22.5%)	16.7 (8.4%)

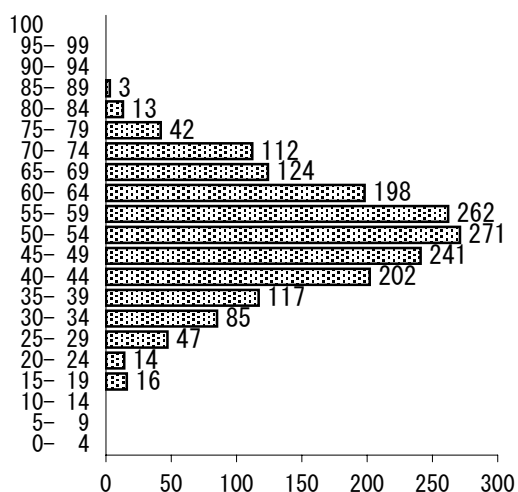
Note: Percentages indicate the ratio to a perfect score.

Score Distribution



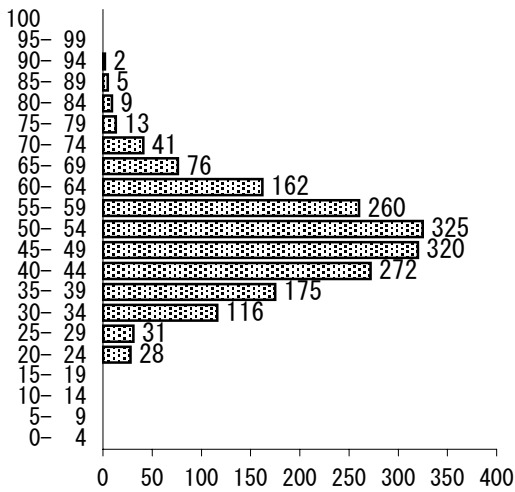
Japanese as a Foreign Language

Total examinees	17,771
Average Score	211.1
Highest Score	388.0
Lowest Score	38.0



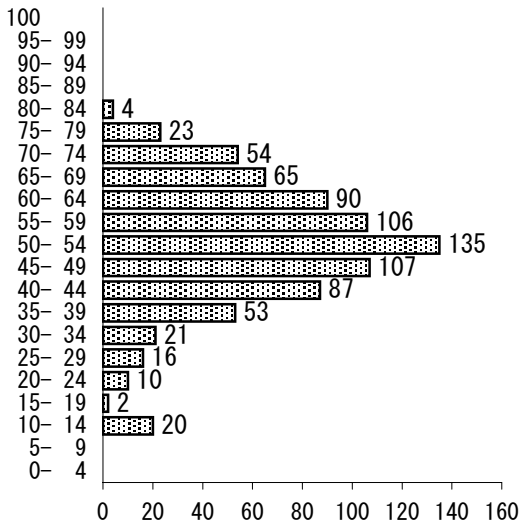
Physics

Total examinees	1,747
Average Score	52.1
Highest Score	86.0
Lowest Score	17.0



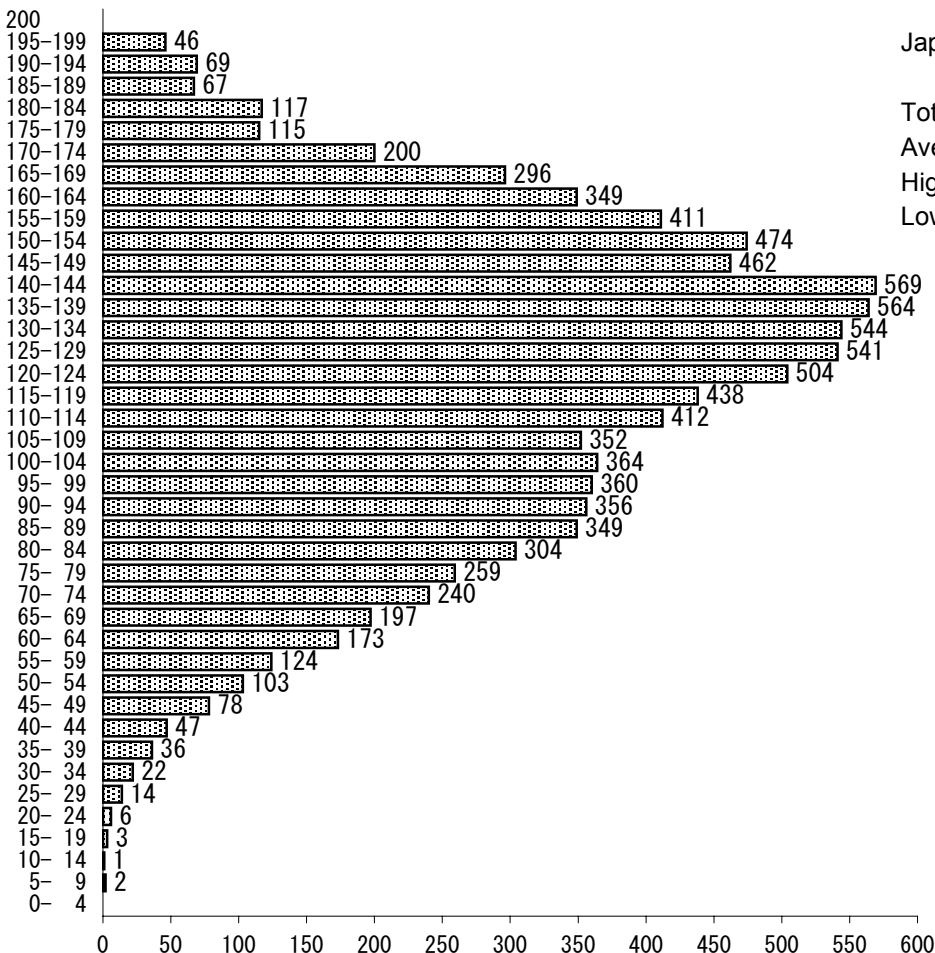
Chemistry

Total examinees	1,835
Average Score	49.2
Highest Score	94.0
Lowest Score	20.0



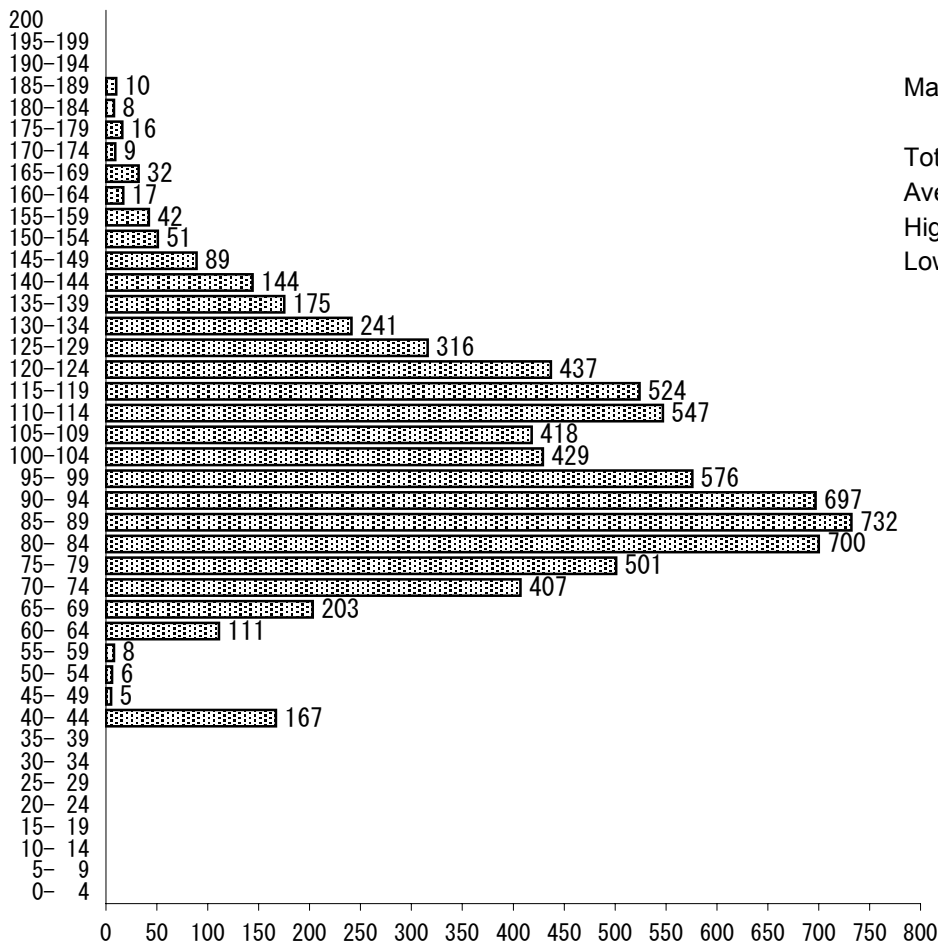
Biology

Total examinees	793
Average Score	52.0
Highest Score	84.0
Lowest Score	11.0



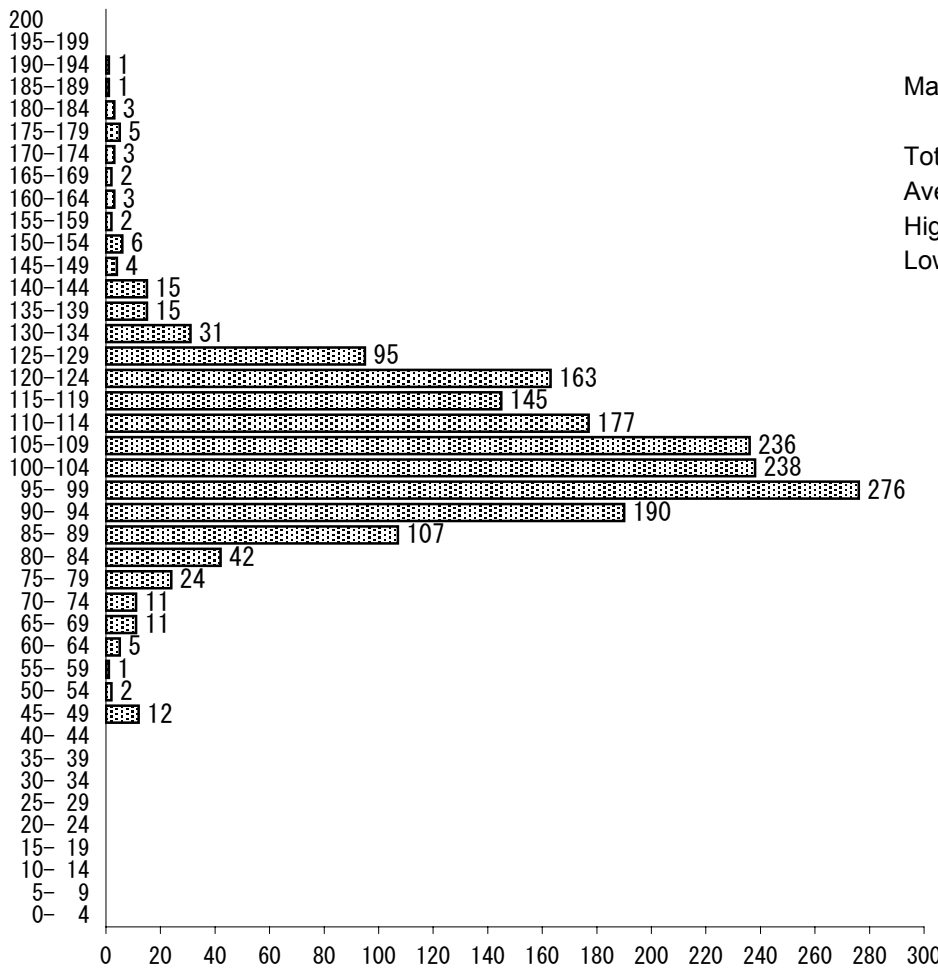
Japan and the World

Total examinees	9,568
Average Score	121.1
Highest Score	198.0
Lowest Score	8.0



Mathematics (Course 1)

Total examinees 7,618
 Average Score 100.0
 Highest Score 189.0
 Lowest Score 42.0



Mathematics (Course 2)

Total examinees 1,826
 Average Score 105.7
 Highest Score 192.0
 Lowest Score 45.0