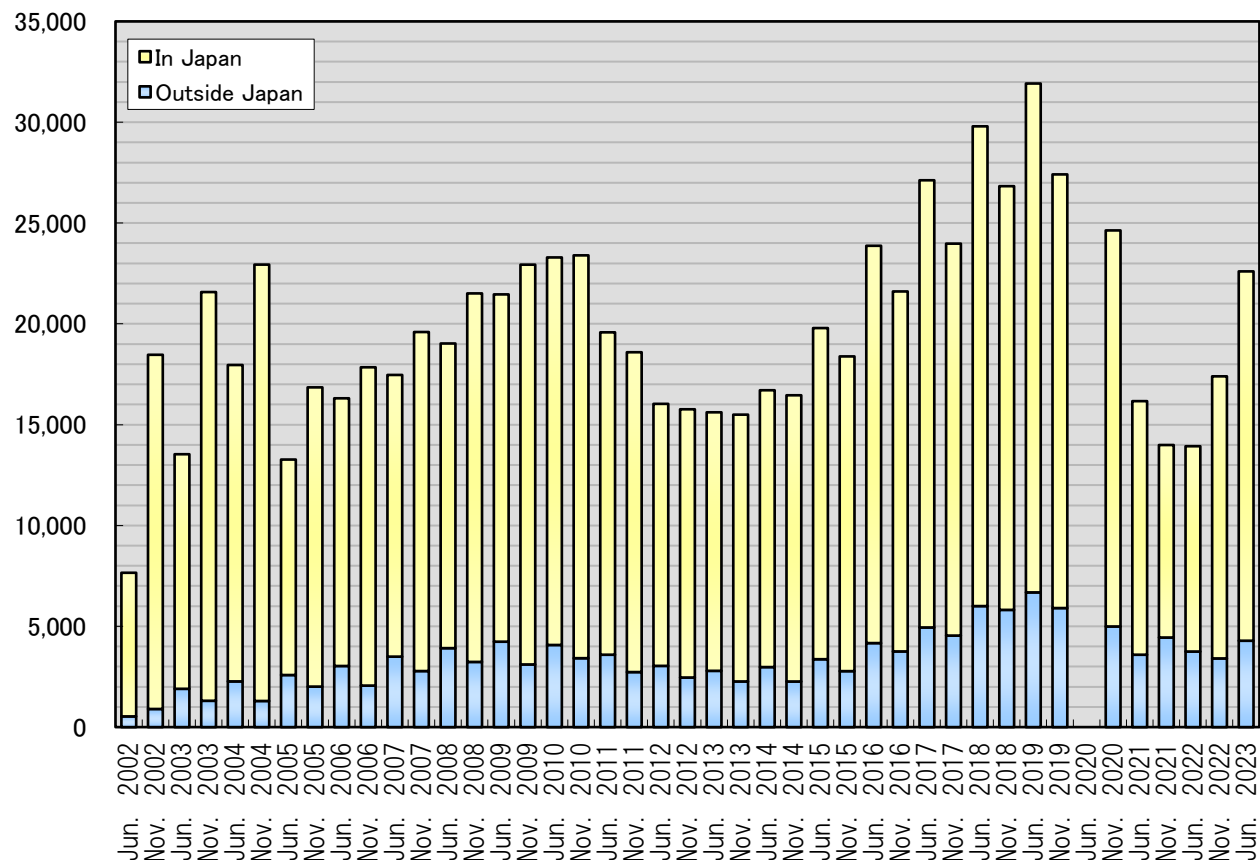


Transition of The Number of EJU Examinees

	In Japan	Outside Japan	Total
Jun. 2002	7,123	532	7,655
Nov. 2002	17,566	900	18,466
Jun. 2003	11,633	1,901	13,534
Nov. 2003	20,270	1,307	21,577
Jun. 2004	15,691	2,268	17,959
Nov. 2004	21,641	1,297	22,938
Jun. 2005	10,686	2,584	13,270
Nov. 2005	14,840	2,010	16,850
Jun. 2006	13,276	3,032	16,308
Nov. 2006	15,786	2,060	17,846
Jun. 2007	13,970	3,496	17,466
Nov. 2007	16,814	2,781	19,595
Jun. 2008	15,109	3,917	19,026
Nov. 2008	18,276	3,234	21,510
Jun. 2009	17,224	4,237	21,461
Nov. 2009	19,827	3,108	22,935
Jun. 2010	19,220	4,074	23,294
Nov. 2010	19,978	3,419	23,397
Jun. 2011	15,988	3,591	19,579
Nov. 2011	15,862	2,730	18,592
Jun. 2012	12,994	3,038	16,032
Nov. 2012	13,303	2,460	15,763
Jun. 2013	12,821	2,792	15,613
Nov. 2013	13,232	2,265	15,497
Jun. 2014	13,729	2,978	16,707
Nov. 2014	14,195	2,263	16,458
Jun. 2015	16,423	3,368	19,791
Nov. 2015	15,608	2,777	18,385
Jun. 2016	19,704	4,168	23,872
Nov. 2016	17,853	3,754	21,607
Jun. 2017	22,178	4,943	27,121
Nov. 2017	19,438	4,540	23,978
Jun. 2018	23,793	6,003	29,796
Nov. 2018	21,013	5,815	26,828
Jun. 2019	25,237	6,682	31,919
Nov. 2019	21,507	5,905	27,412
Jun. 2020	0	0	0
Nov. 2020	19,642	4,992	24,634
Jun. 2021	12,576	3,591	16,167
Nov. 2021	9,547	4,444	13,991
Jun. 2022	10,181	3,749	13,930
Nov. 2022	13,990	3,407	17,397
Jun. 2023	18,317	4,285	22,602



←Due to the new coronavirus (COVID-19), 2020 EJU 1st Session was canceled.