

2016 Examination for Japanese University Admission  
for International Students

# Japan and the World

(80 min.)

## I Rules of Examination

1. Do not leave the room without the proctor's permission.
2. Do not take this question booklet out of the room.

## II Rules and Information Concerning the Question Booklet

1. Do not open this question booklet until instructed.
2. After instruction, write your name and examination registration number in the space provided below, as printed on your examination voucher.
3. This question booklet has 25 pages.
4. If your question booklet is missing any pages, raise your hand.
5. You may write notes and calculations in the question booklet.

## III Rules and Information Concerning the Answer Sheet

1. You must mark your answers on the answer sheet with an HB pencil.
2. Each question is identified by one of the row numbers **1**, **2**, **3**, ...  
Follow the instruction in the question and completely fill in your answer in the corresponding row of the answer sheet (mark-sheet).
3. Make sure also to read the instructions on the answer sheet.

※ Once you are instructed to start the examination, fill in your examination registration number and name.

Examination registration number			*				*					
Name												

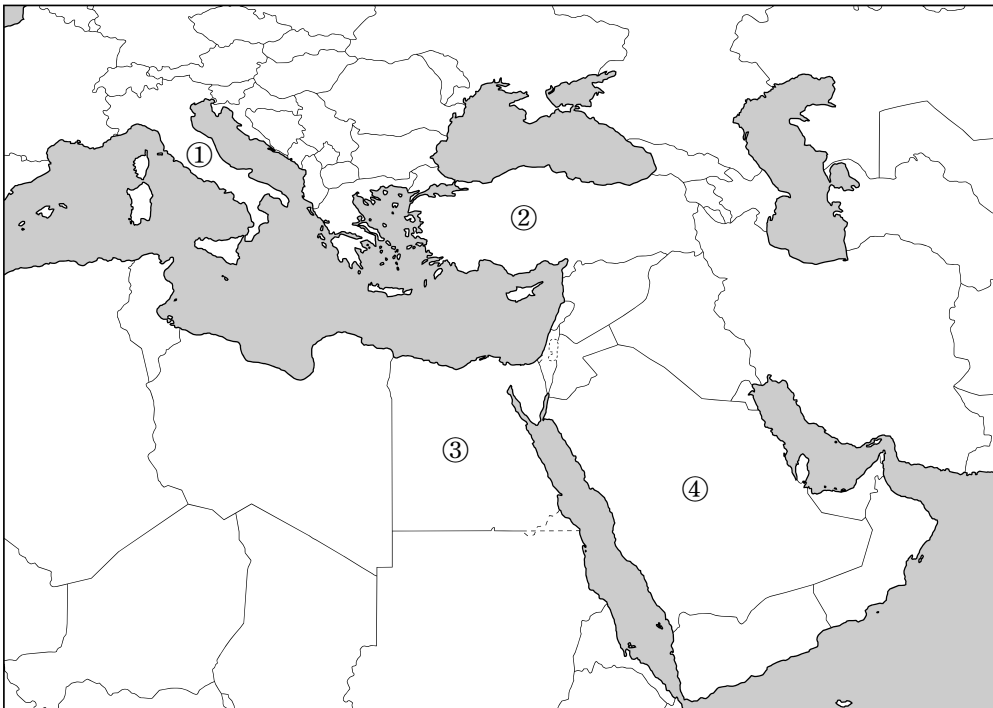
Q1 Read the following passage and answer questions (1)–(4) below.

The 1 Republic of Turkey, whose territory extends into both Europe and Asia, was founded in 2 1923 under the leadership of Mustafa Kemal Atatürk, who has been called the “Founding Father of Turkey.”

Today’s Turkey, which has fostered both Islam and democracy, is sometimes referred to as a model of Islamic democracy. In addition, it has 3 achieved relatively stable economic development.

As for foreign relations, Turkey is a member of 4 NATO (North Atlantic Treaty Organization), but has not yet joined the EU (European Union).

- (1) With reference to underlined item 1, from ①–④ on the map below choose the answer that correctly indicates the location of Turkey. 1



## Japan and the World—2

- (2) With reference to underlined item **2**, 1923 is the same year that the Great Kanto Earthquake occurred. From ①–④ below choose the answer that correctly arranges historical events of this period in chronological order. **2**

- ① Outbreak of World War I → Russian Revolution → Great Kanto Earthquake  
→ Beginning of Great Depression
- ② Russian Revolution → Outbreak of World War I → Beginning of Great  
Depression → Great Kanto Earthquake
- ③ Russian Revolution → Outbreak of World War I → Great Kanto Earthquake  
→ Beginning of Great Depression
- ④ Outbreak of World War I → Beginning of Great Depression → Russian  
Revolution → Great Kanto Earthquake

- (3) With reference to underlined item **3**, the table below lists trends in GDP per capita (based on purchasing power parity) of Japan, Turkey, the United Arab Emirates (UAE), and China. From ①–④ below choose the letter that represents Turkey in the table. **3**

	1990	1995	2000	2005	2010
A	74,017	77,467	84,975	84,338	56,245
B	19,230	22,922	25,938	30,441	33,741
C	4,439	5,411	9,321	11,512	16,166
D	980	1,860	2,915	5,053	9,239

Source: Website of the World Bank

- ① A
- ② B
- ③ C
- ④ D

(4) With reference to underlined item **4**, from ①-④ below choose the country that is **not** a member of NATO, as of 2016. 4

- ① Greece
- ② France
- ③ USA
- ④ Switzerland

## Japan and the World—4

**Q2** Read the following paragraph and answer questions (1)-(4) below.

Mexico is a <sub>1</sub> federal republic located in North America, and is a <sub>2</sub> country with a population over 100 million. It has a close economic relationship with the USA, and that relationship has grown stronger since <sub>3</sub> NAFTA (North American Free Trade Agreement) took effect. Mexico has had ties with Japan for more than 400 years, starting when Mexico was a colony of Spain. In fact, Mexico was the first country outside Asia with which Japan established an <sub>4</sub> equal treaty.

(1) With reference to underlined item **1**, from ①-④ below choose the country that, like Mexico, is a federal republic. **5**

- ① Saudi Arabia
- ② Germany
- ③ Singapore
- ④ New Zealand

(2) With reference to underlined item **2**, from ①-④ below choose the country that has a population over 100 million. **6**

- ① Brazil
- ② France
- ③ Egypt
- ④ Argentina

- (3) With reference to underlined item **3**, from ①-④ below choose the statement that best describes NAFTA. **7**

- ① It was established to create an economic bloc by implementing common external tariffs.
- ② It was established to phase out tariffs and eliminate non-tariff barriers.
- ③ It was established to remove restrictions on the flow of labor and implement a common agricultural policy.
- ④ It was established to unify monetary policies in the region by adopting a common currency.

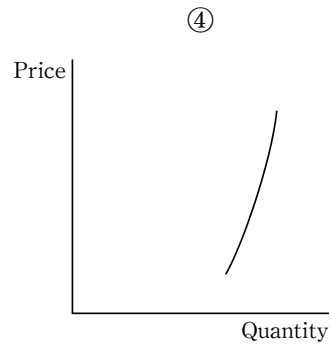
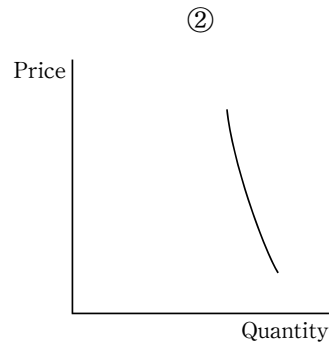
- (4) With reference to underlined item **4**, before Japan and Mexico entered into an equal treaty, Japan concluded unequal treaties with the Great Powers. From ①-④ below choose the statement that best describes those unequal treaties. **8**

- ① The language of each country signing a treaty with Japan became recognized as an official language of Japan.
- ② Japan was required to appoint foreign nationals to its Supreme Court.
- ③ Japan did not have tariff autonomy, and the foreign signatories were permitted to run consular courts.
- ④ Foreign nationals were allowed to enter Japan, but Japanese nationals were not permitted to enter the other treaty countries.

## Japan and the World—6

**Q3** From ①-④ below choose the graph that best matches the situation described by the following statement. 9

Since the amount of crops planted cannot be readily changed, the quantity produced cannot be increased dramatically, even if the price rises.



**Q4** A farmer sells all the potatoes that were harvested in a year, except the ones saved as seed potatoes (or raw material) for the following year, to a processing plant for ¥5,000. The processing plant uses all those potatoes to make potato chips, which it sells to a retailer for ¥12,000. The retailer sells all those potato chips to consumers within the same year, generating ¥18,000 in sales. In all these transactions, what total yen amount would be counted in the GDP for that year? From ①–④ below choose the correct answer. **10**

- ① ¥5,000
- ② ¥12,000
- ③ ¥18,000
- ④ ¥35,000

**Q5** In general, prices tend to rise when the economy is performing strongly, but sometimes prices rise even though the economy is in recession. From ①–④ below choose the correct term used for this phenomenon. **11**

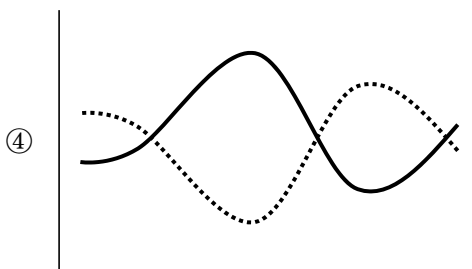
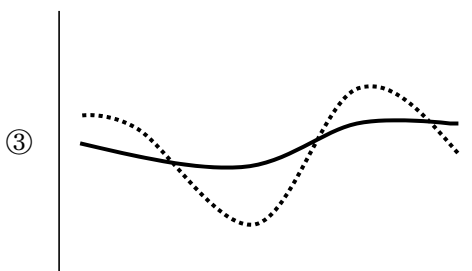
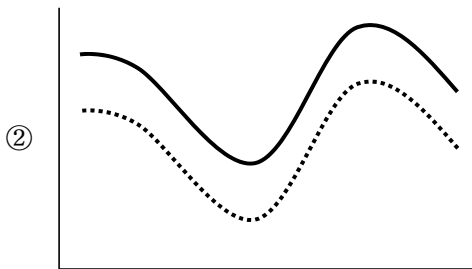
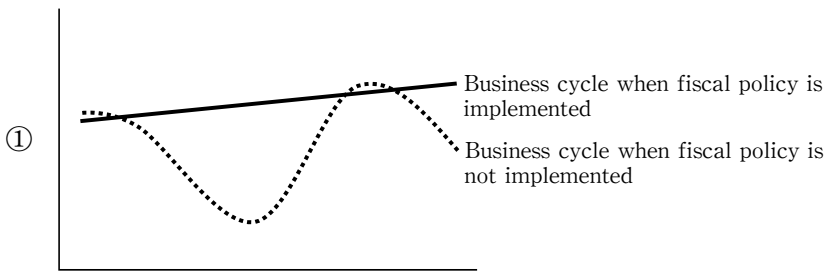
- ① hyperinflation
- ② stagflation
- ③ deflation
- ④ demand-pull inflation



Japan and the World—8

**Q6** Fiscal policy is seen as having a leveling effect on the waves of the business cycle. From ①-④ below choose the figure that best represents this effect. Note that each horizontal axis represents time, each vertical axis represents an index of business activity, each dotted line represents the business cycle when fiscal policy is not implemented, and each solid line represents the business cycle when fiscal policy is implemented.

**12**



**Q7** From ①–④ below choose the statement that best describes joint-stock companies.

**13**

- ① If a joint-stock company goes bankrupt, the legal liability of shareholders does not exceed the amount of their investment.
- ② The only way joint-stock companies can procure funds is by issuing shares.
- ③ Shares can be held only by employees of the joint-stock company.
- ④ In Japan, joint-stock companies with less than 100 employees are referred to as *goushi-kaisha* (limited partnership companies).

**Q8** In 1973, Japan switched to a floating-exchange-rate system. From ①–④ below choose the statement that best describes a change in the Japanese economy that took place in the 1970s following that switch.

**14**

- ① The rise in import prices due to a weaker yen led to the First Oil Crisis.
- ② An extremely low-interest-rate policy was adopted, resulting in the emergence of the so-called bubble economy.
- ③ Japan became an Article VIII party of the IMF (International Monetary Fund), and took steps to liberalize its capital market.
- ④ Businesses, particularly the electronic and automotive industries, proceeded to streamline management to deal with the appreciation of the yen.

**Q9** The WTO (World Trade Organization) was founded in 1995. From ①–④ below choose the situation most closely linked with the establishment of the WTO.

**15**

- ① As the effectiveness of the procedure for settling disputes was not adequately ensured, it became necessary to strengthen it.
- ② As international confidence in the US dollar's role as the key currency declined, multilateral talks on international monetary problems became necessary.
- ③ As economies became increasingly globalized, it became necessary to establish a system of international taxation that was fair and also prevented tax leakage.
- ④ With the establishment of international free trade, it became necessary to strengthen bilateral and intraregional trade relations, as exemplified by free trade agreements (FTAs).

## Japan and the World—12

**Q11** The European Free Trade Association (EFTA) was founded in 1960 by several European countries that were not members of the European Economic Community (EEC). From ①-④ below choose the country that was a founding member of the EFTA. **17**

- ① France
- ② UK
- ③ Italy
- ④ Luxembourg

**Q12** From ①-④ below choose the statement that best describes the labor environment in Japan. **18**

- ① Because of the Act on Equal Employment Opportunity between Men and Women, women occupy nearly half of the management positions at large corporations.
- ② Ever since the Labor Standards Act was amended, the principle of equal pay for equal work has been applied to all occupations.
- ③ In order to deal with the aging population, efforts are being made to expand employment opportunities for elderly people, such as by raising the retirement age.
- ④ In order to solve labor shortages, all industrial sectors are actively hiring foreign workers.

- Q13** The following table lists the amount of CO<sub>2</sub> emissions per capita and per \$1 GDP, along with the change in CO<sub>2</sub> emissions, for the USA, China, Japan, and Russia in 2013. From ①–④ below choose the combination that best identifies the countries represented by A-D in the table. **19**

	A	B	C	D
CO <sub>2</sub> emissions per capita (tons)	16.18	10.79	9.70	6.60
CO <sub>2</sub> emissions per \$1 GDP (kg)	0.35	0.70	0.30	0.64
Change in CO <sub>2</sub> emissions (%)	0.3	-1.5	0.7	6.3

Note: GDP was converted to US\$ using the appropriate exchange rates for 2005.

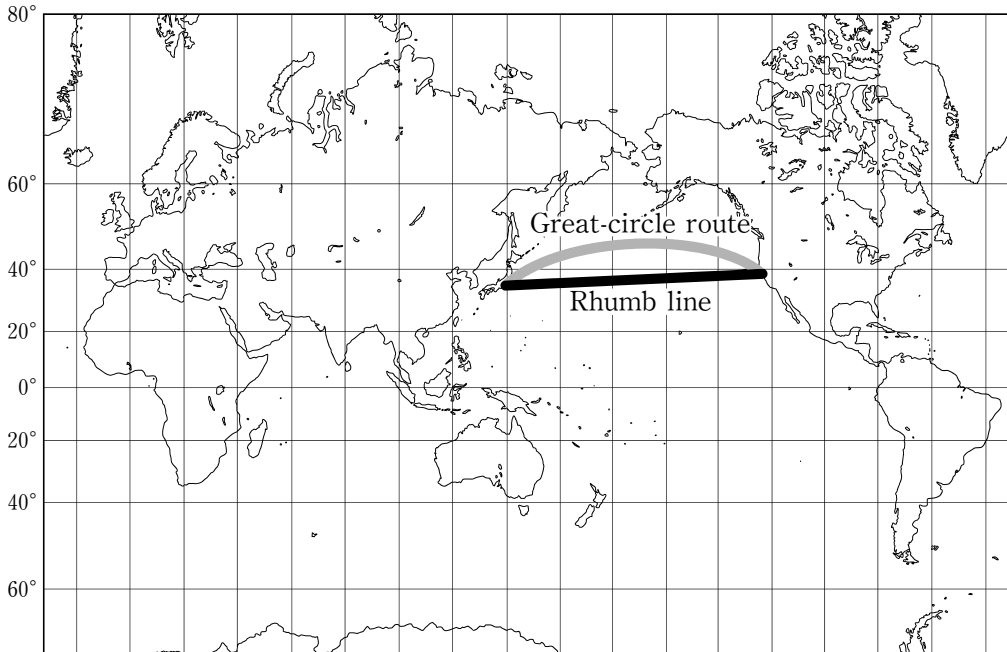
Change in CO<sub>2</sub> emissions is the annual average based on levels in 1990.

Source: Website of the IEA

	A	B	C	D
①	USA	Russia	Japan	China
②	China	USA	Russia	Japan
③	Japan	China	USA	Russia
④	Russia	Japan	China	USA

Q14 The world map below was created using the Mercator projection. From ①-④ below choose the statement that best describes either this projection method or this map.

20



- ① The length of the 60° north latitudinal line is exaggerated by roughly a factor of two compared with the equator.
- ② There are no distortions along the same longitude belt, so surface area is represented with a high degree of accuracy.
- ③ A rhumb line represents the shortest surface distance between the two points it connects.
- ④ This map style is suitable as a nautical chart because voyaging along a great-circle route would keep the ship at a constant angle with respect to longitude.

- Q15** Tokyo, London, and New York are located in different time zones. From ①-④ below choose the combination that correctly indicates the largest intercity time difference and the smallest intercity time difference from among the following pairs of cities: Tokyo-London, Tokyo-New York, and New York-London. Here, the standard time meridian is defined as  $135^\circ$  east for Tokyo,  $0^\circ$  for London, and  $75^\circ$  west for New York. Also, ignore the effect of daylight saving time.

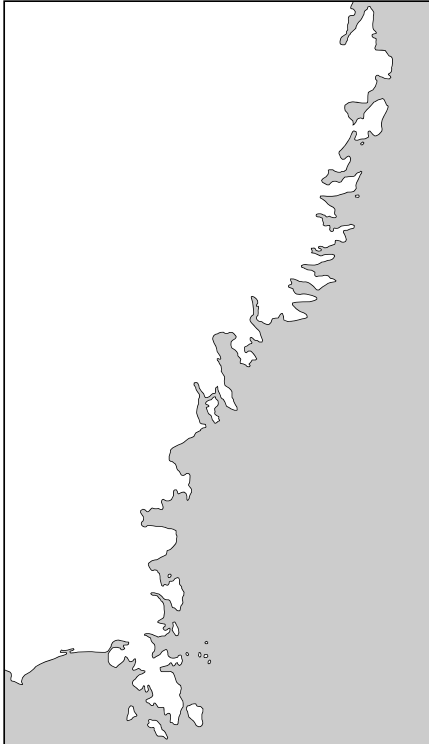
<b>21</b>
-----------

	Largest difference	Smallest difference
①	Tokyo-London	Tokyo-New York
②	Tokyo-London	New York-London
③	Tokyo-New York	Tokyo-London
④	Tokyo-New York	New York-London

Japan and the World—16

**Q16** The map below represents the coastline of a certain region of Japan. From ①–④ below choose the answer that best indicates the topographical term used for this type of coastline. Note that the map is oriented so that north is at the top, the left side is inland, and the right side is the ocean.

**22**



- ① ria coast
- ② fjord
- ③ marine terrace
- ④ delta



**Q18** The tables below list the top five countries in terms of natural-gas production and natural-gas exports in 2013. From ①–④ below choose the answer that correctly identifies the country represented by X in both tables. **24**

Natural-gas production (bil. cubic feet)

Country	Production	%
USA	24,334	20.1
X	22,139	18.3
Iran	5,696	4.7
Qatar	5,598	4.6
Canada	5,129	4.2
World total	121,283	100.0

Natural-gas exports (bil. cubic feet)

Country	Exports	%
X	7,801	20.4
Qatar	4,432	11.6
Norway	3,630	9.5
Canada	2,912	7.6
Netherlands	2,376	6.2
World total	38,302	100.0

Source: Website of the US Energy Information Administration

- ① Germany
- ② China
- ③ Russia
- ④ UK

**Q19** Read the following sentence and from ①-④ below choose the answer that correctly fills blank  in the sentence below. **25**

From the end of World War I to the outbreak of World War II,  – which took a hostile view of communism and rejected liberalism and democracy – emerged in some European countries, such as Italy and Germany.

- ① hegemonism
- ② fascism
- ③ absolutism
- ④ anarchism

**Q20** From ①-④ below choose the statement that best describes the political system of the country mentioned. **26**

- ① The UK is a constitutional monarchy under which the prime minister is elected from among members of the House of Lords.
- ② France has a mixed presidential and parliamentary-cabinet system, and the president, who is elected by the national assembly, has only a ceremonial role.
- ③ The USA has a presidential system, and the president is not a member of Congress and does not have the power to submit bills.
- ④ Russia uses a parliamentary-cabinet system in which the prime minister has the power to dissolve the assembly, and the assembly has the power to make motions of no-confidence against the cabinet.

Japan and the World—20

**Q21** From ①-④ below choose the item that is **not** a power granted to the Japanese Diet by the Constitution of Japan. **27**

- ① ratification of constitutional amendments
- ② making decisions on budgets
- ③ approval of treaties
- ④ establishment of an impeachment court

**Q22** From ①-④ below choose the statement that best describes the Prime Minister of Japan. **28**

- ① The Prime Minister cannot concurrently serve as a Diet member.
- ② The Prime Minister has the power to remove Ministers of State.
- ③ The Prime Minister is directly elected by the people.
- ④ The Prime Minister must resign when a no-confidence resolution is passed by a joint committee of both Houses of the Diet.

**Q23** Article 20 of the Constitution of Japan includes this provision: “The State and its organs shall refrain from religious education or any other religious activity.” From ①-④ below choose the term that best applies to this provision. **29**

- ① academic freedom
- ② popular sovereignty
- ③ separation of religion and state
- ④ non-intervention in civil affairs

**Q24** The Constitution of Japan prescribes both the rights and duties of the people. From ①-④ below choose the answer that is one of the three duties prescribed.

**30**

- ① the obligation to perform community service
- ② the obligation to serve in the military
- ③ the obligation to work
- ④ the obligation to respect and uphold laws

**Q25** The USA's jury system is an example of the direct participation of the people in court trials. From ①-④ below choose the statement that best describes this system.

**31**

- ① The jury decides whether the defendant is guilty or not guilty; if the defendant is found guilty, the jury and the judge decide the sentence.
- ② The jury and the judge decide whether the defendant is guilty or not guilty; if the defendant is found guilty, the judge decides the sentence.
- ③ The judge decides whether the defendant is guilty or not guilty; if the defendant is found guilty, the jury decides the sentence.
- ④ The jury decides whether the defendant is guilty or not guilty; if the defendant is found guilty, the judge decides the sentence.

## Japan and the World—22

**Q26** The Congress of Vienna convened from 1814 to 1815 with the aim of restoring international order in the chaos that followed the French Revolution and the Napoleonic Wars. From ①-④ below choose the principle of international order advocated at this conference. **32**

- ① open diplomacy
- ② balance of power
- ③ self-determination
- ④ collective security

**Q27** Events A-D below concern approaches to environmental issues in Japan. From ①-④ below choose the answer that correctly arranges the events in chronological order. **33**

A: introduction of the Tax for Climate Change Mitigation

B: enactment of the Basic Environment Law

C: enactment of the Basic Law for Environmental Pollution Control

D: enactment of the Basic Law for Establishing a Recycling-based Society

- ① A → D → B → C
- ② B → A → C → D
- ③ C → B → D → A
- ④ D → C → A → B

**Q28** From ①–④ below choose the statement that best describes the Civil War in America. **34**

- ① The war was triggered by a dispute over leadership between the French Americans of the Northern states and the British Americans of the Southern states.
- ② The Northern states demanded the strengthening of states' rights and the continuation of slavery.
- ③ The Southern states exported cotton and other agricultural products to Europe, so they supported free trade.
- ④ George Washington, who was elected President in 1860, issued the Emancipation Proclamation.

**Q29** From ①–④ below choose the statement that best describes Wilhelm II of the German Empire. **35**

- ① He adopted Weltpolitik (world policy), an expansionary policy that included building a large navy.
- ② He enacted the Anti-Socialist Laws to prevent the spread of socialist ideology.
- ③ He adopted a hostile policy toward Catholics that was known as Kulturkampf (culture struggle).
- ④ He established the German Empire following victory in the war with Austria over German unification.

Japan and the World—24

**Q30** From ①-④ below choose the statement that does **not** accurately describe an event following World War I. **36**

- ① The Treaty of Versailles provided for the establishment of the League of Nations.
- ② Whereas newly independent states emerged in Eastern Europe, self-determination movements gained momentum in many parts of Asia.
- ③ Japan was given a mandate over the Marshall Islands and certain other islands in the Pacific Ocean.
- ④ The USA colonized the Philippines following the Spanish-American War.

**Q31** From ①-④ below choose the statement that best describes an event that occurred early in World War II. **37**

- ① Ireland was invaded by the UK and became the UK's protectorate.
- ② France declared war upon Germany and annexed the Saar Territory.
- ③ Austria invaded Italy and annexed northern Italy.
- ④ Germany and the USSR invaded Poland and divided it between them.

**Q32** From ①-④ below choose the statement that best describes an event that occurred around the beginning of the Cold War. **38**

- ① The USA intervened in the Vietnam War and began bombing North Vietnam.
- ② The USA announced the Marshall Plan, which was intended to support the economic recovery of European countries.
- ③ The USSR invaded Afghanistan to support the pro-USSR government.
- ④ Under the leadership of Mikhail Gorbachev, the USSR took a “New Thinking” approach to foreign policy and began providing aid to Eastern European countries.

**The end of the questions for Japan and the World.** Leave answer spaces

**39** — **60** blank.

**Do not take this question booklet out of the room.**



