

# BEVIを利用した留学帰国者の 留学経験及び学習成果の測定

Hajime Nishitani  
Vice President(International)  
Professor of Law  
Hiroshima University

17 March 2016  
JASSO, Tokyo



1

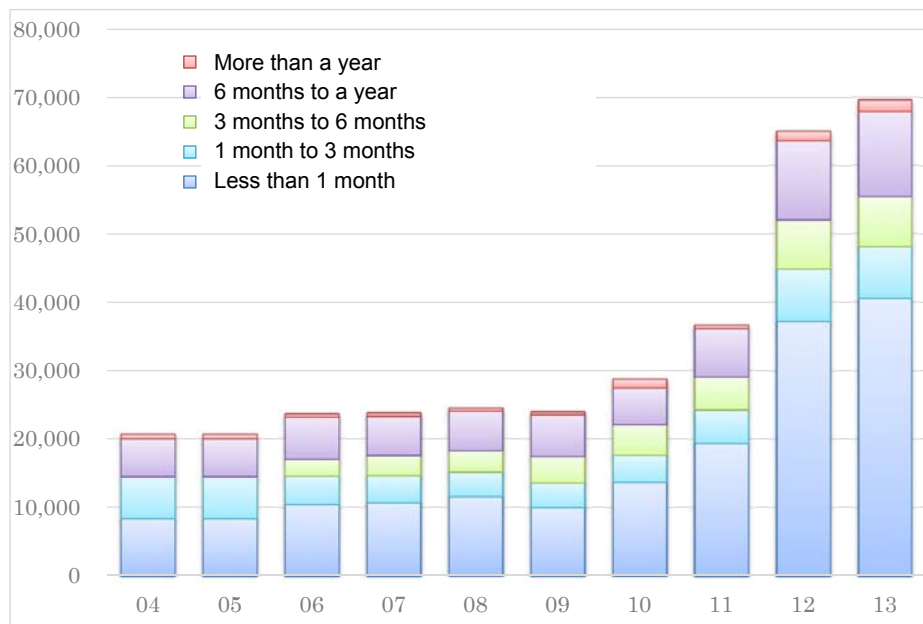
## Overview



- General Trends of Mobility
  - Short Term
  - Inwardness
- Hiroshima University
  - Short Term Programmes (examples)
  - Short Term to Long Term
  - Existence of Various Programmes
  - Needs for Assessment
  - Bevi in Japanese

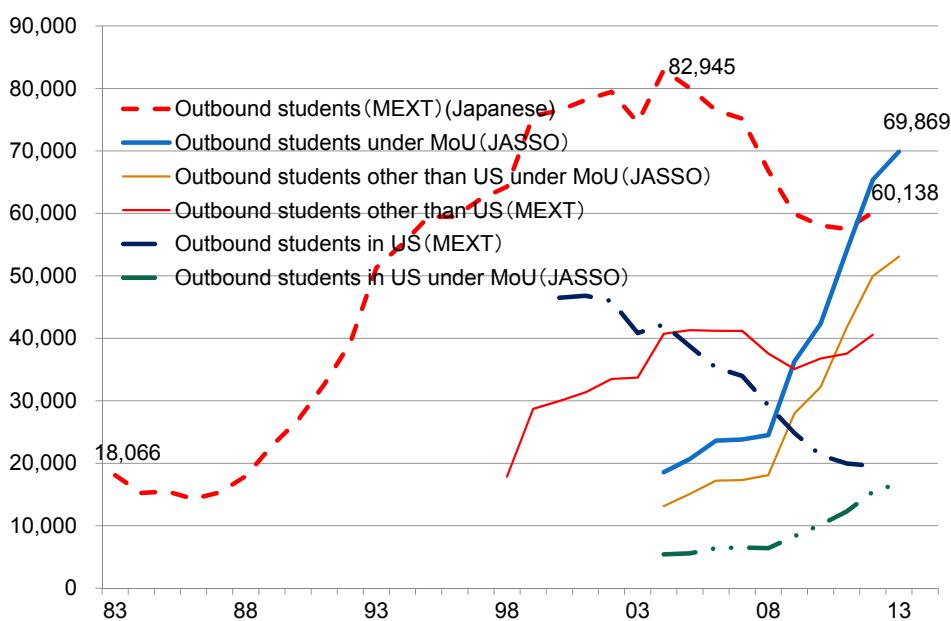
2

# Outbound: Short Term – Long Term (JASSO)



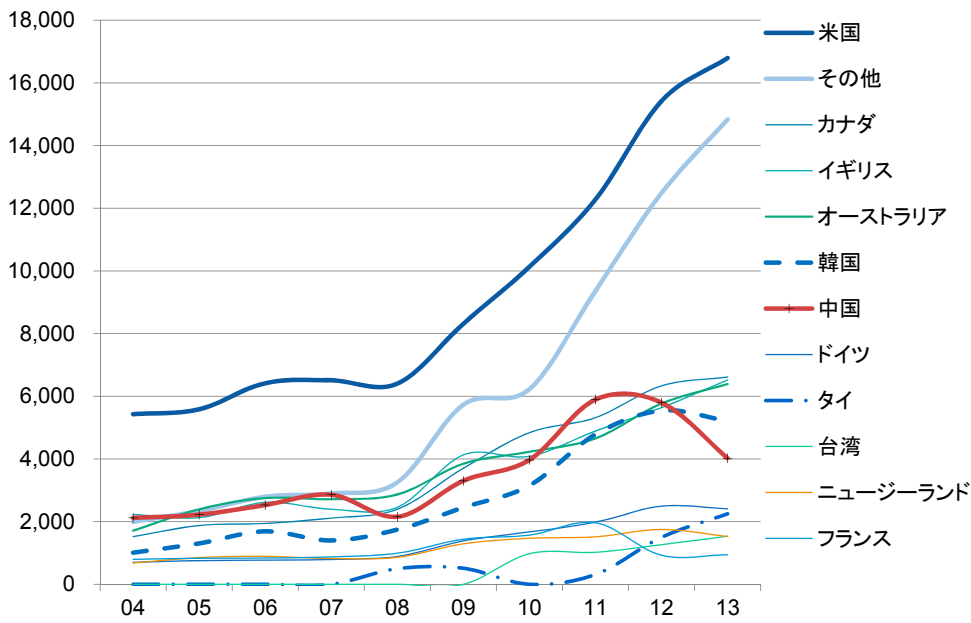
- Majority of programmes: Short term

# Outbound(JASSO/MEXT/MoU)



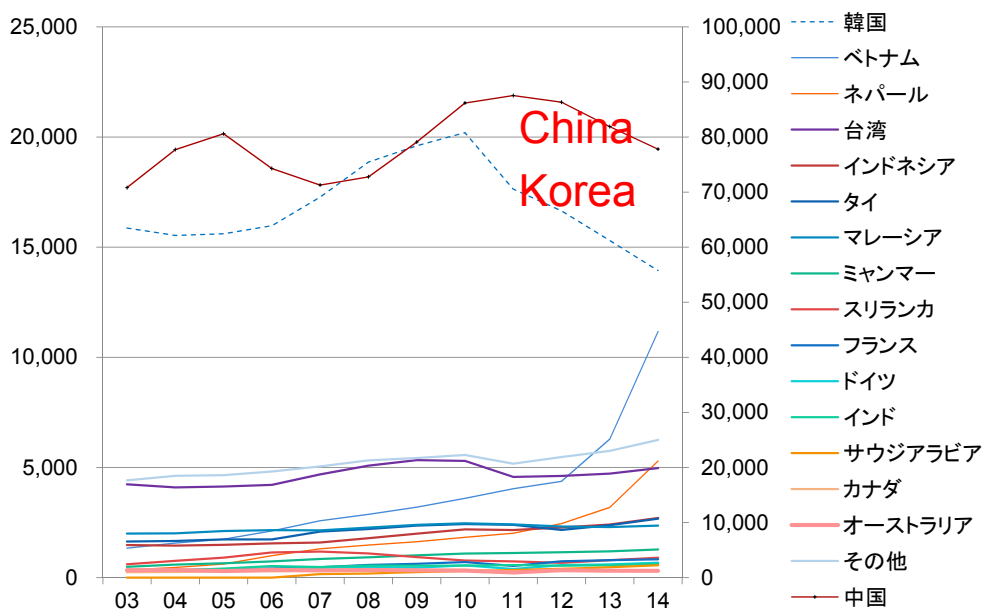
- Decrease of Total Number
- Increase of MoU students

# Outbound(JASSO) Destinations



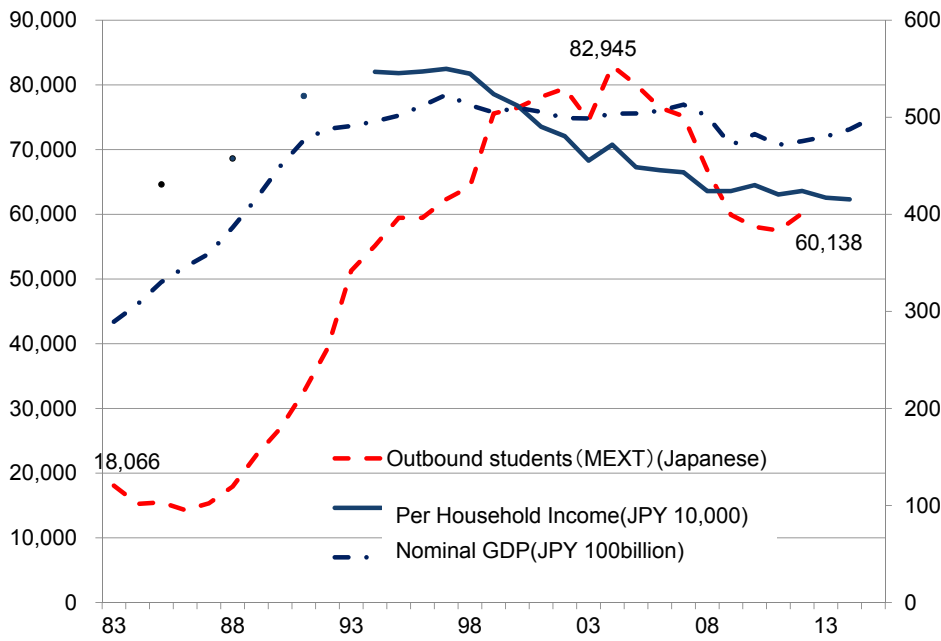
- Various Destinations
- Decreases

# Inbound (JASSO)



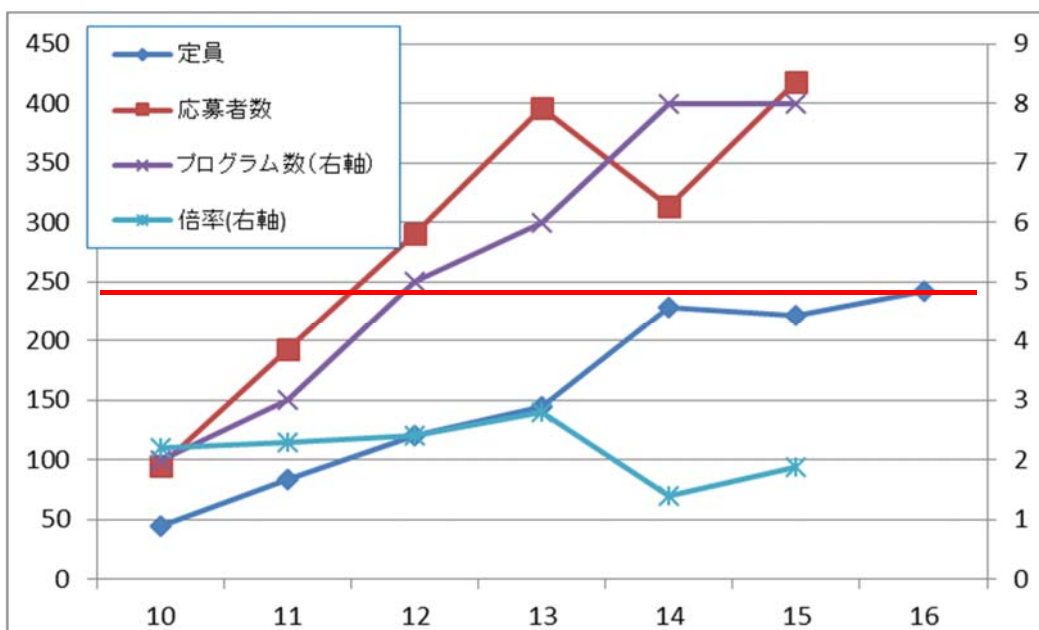
- Various Destinations
- Decreases

# Inwardness



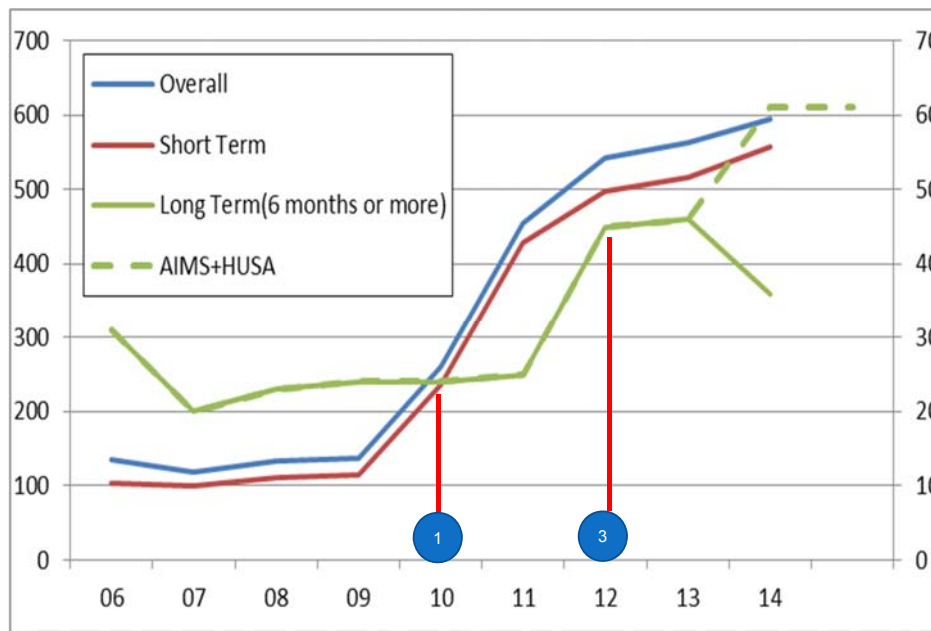
- Financial Hardship

# Needs in Hiroshima University



- Existence of Various Programmes  
→ Needs for Evaluation

## Needs in Hiroshima University



- Short Term → Long Term

9

## Needs for Assessment

- How to increase Long Term
  - Determining elements
    - Financial Inwardness
    - Psychological?
- How to manage programmes
  - Per Programme Quality
  - Outcome
  - Output

10

- English to Japanese BEVI
  - English to Japanese Translation
  - Japanese to English Translation
  - Cultural adjustments
  - Statistical Verification

examples