

## Outline of Results

### 2010 Examination for Japanese University Admission for International Students (2nd Session)

#### Contents

1. Guidelines for the 2010 Examination for Japanese University Admission for International Students (EJU)	1
2. Examination Details	3
3. List of Average Scores by Subject	6
4. Score Distribution	7
5. Cumulative Distribution of Scaled Score	10

Japan Student Services Organization (JASSO)

# Guidelines for the 2010 Examination for Japanese University Admission for International Students (EJU)

## 1. Purpose

This examination is used to evaluate the Japanese language proficiency and the basic academic abilities of international students who wish to study at the undergraduate level at universities or other such higher educational institutions in Japan.

## 2. Examination Administrator

The Japan Student Services Organization administers the examination with the cooperation of the Ministry of Education, Culture, Sports, Science and Technology, the Ministry of Foreign Affairs, Japanese universities, and affiliated institutions in Japan and overseas.

## 3. General Description of the Examination

### (1) Eligibility:

International students who wish to study at the undergraduate level at universities or other such higher educational institutions in Japan

### (2) Date of exam:

1st Session: June 20, 2010 (Sunday) 2nd Session: November 14, 2010 (Sunday)

### (3) Venues:

Japan: Hokkaido, Miyagi, Gunma, Saitama, Chiba, Tokyo, Kanagawa, Ishikawa or Fukui, Shizuoka, Aichi, Kyoto, Osaka, Hyogo, Okayama or Hiroshima, Fukuoka and Okinawa

Outside Japan: Hong Kong, India (New Delhi), Indonesia (Jakarta and Surabaya), Malaysia (Kuala Lumpur), Mongolia (Ulaanbaatar), Myanmar (Yangon), Philippines (Manila), Republic of Korea (Seoul and Busan), Russia (Vladivostok), Singapore, Sri Lanka (Colombo), Taiwan (Taipei), Thailand (Bangkok) and Vietnam (Hanoi and Ho Chi Minh City)

Note: Hong Kong is carried out from 2nd Session.

### (4) Subjects:

Depending on the university they wish to enter and the course of study they wish to pursue, the examinees select the subject tests that they will take from the following.

Subject	Purpose	Length	Score Range
Japanese as a Foreign Language	Measurement of the Japanese language skills (academic Japanese) required for studying at Japanese universities.	125 minutes	reading comprehension, listening and listening-reading comprehension 0-400
			Writing 0-50
Science	Measurement of the basic academic skills in science (Physics, Chemistry, and Biology) necessary for studying in a science department of a Japanese university.	80 minutes	0-200
Japan and the World	Measurement of the basic academic skills in liberal arts, particularly thinking and logical abilities, necessary for studying at Japanese universities.	80 minutes	0-200
Mathematics	Measurement of the basic academic skills in mathematics necessary for studying at Japanese universities.	80 minutes	0-200

### [Remarks]

- ① The test in Japanese as a Foreign Language consists of writing, reading comprehension, and listening and listening-reading comprehension.
- ② In the science test, examinees select two subjects from physics, chemistry and biology depending on the requirements of the university they wish to enter and the course of study they wish to pursue.
- ③ In the mathematics test, examinees select either of Course 1 if they plan to enter liberal arts programs or science programs requiring comparatively less knowledge of mathematics, or Course 2 if they plan to enter programs requiring advanced knowledge of mathematics depending on the requirements of the university they wish to enter and the course of study they wish to pursue.
- ④ Examinees may not choose to take both the Science test and the Japan and the World test.
- ⑤ The score ranges listed are not raw scores except the writing in Japanese as a foreign language; instead, they are based on a common scale. Also the writing is scored based on the standards.
- ⑥ Refer to the syllabuses for each subject.

### (5) Examination languages option:

The EJU is available in Japanese or English, except for the Japanese as a Foreign Language test, which is given in Japanese only, applicants need to indicate their preference in the application depending on the requirements of the university they wish to enter and the course of study they wish to pursue.

### (6) Answering format:

All questions use a multiple-choice format, except for the writing section of the Japanese as a Foreign Language test.

#### 4. Application Procedures, etc.

##### (1) Application Procedure

① Application form: As prescribed

② Examination fee: Japan	One subject:	JPY 5,460 (including tax)
	Two or three subjects:	JPY10,920 (including tax)
Outside Japan	Hong Kong	
	One subject	HKD 350
	Two or three subjects	HKD 600
	India	INR 500
	Indonesia	IDR 40,000
	Malaysia	MYR 60
	Mongolia	MNT 10,000
	Myanmar	FEC 15
	Philippines	PHP 250
	Republic of Korea	
	One subject	KRW 30,000
	Two or three subjects	KRW 50,000
	Russia	RUB 300
	Singapore	SGD 36
	Sri Lanka	LKR 700
	Taiwan	
	One subject	TWD 1,200
	Two or three subjects	TWD 1,600
	Thailand	THB 300
	Vietnam	VTD 70,000

③ Application period: Japan

1st Session: From February 15 (Monday) to March 12 (Friday), 2010  
(The application must be postmarked by March 12.)

2nd Session: From July 5 (Monday) to July 30 (Friday), 2010  
(The application must be postmarked by July 30.)

Outside Japan Same as in Japan

④ Applications: Japan The applications should be submitted to the Testing Division, Student Exchange Department, Japan Student Services Organization.

Outside Japan The applications should be submitted to the Overseas Representatives in each country or region.

##### (2) EJU Bulletin

The details of the application procedure and other information will be released in the "Bulletin of the 2010 Examination for Japanese University Admission for International Students (EJU)".

Bulletin Vendors: Japan The bulletin is scheduled to go on sale at major bookstores throughout Japan on February 15, 2010 (Monday). The price is ¥510 (including tax) per copy.

Outside Japan To be decided through consultation with the Overseas Representative in each country or region.

##### (3) Sending of Examination Voucher

Japan Examination vouchers will be sent on the following dates (tentative) in response to applications received.

1st Session: May 21, 2010 (Friday) 2nd Session: October 22, 2010 (Friday)

Outside Japan To be decided through consultation with the Overseas Representative in each country or region.

#### 5. Score Report and Notification

##### (1) Score Reports to Examinees

Score reports will be sent to examinees on the following dates (tentative).

1st Session: July 23, 2010 (Friday) 2nd Session: December 21, 2010 (Tuesday)

##### (2) Notification to Universities

JASSO will begin responding to score inquiries from universities in late July 2010 for the 1st Session, and late December 2010 for the 2nd Session.

Inquires:	Japan Student Services Organization Student Exchange Department, Testing Division 4-5-29 Komaba, Meguro-ku, Tokyo 153-8503 Japan Telephone: 03-6407-7457 Fax: 03-6407-7462 E-mail: <a href="mailto:eju@jasso.go.jp">eju@jasso.go.jp</a>
-----------	--

## Examination Details

### 1. Number of applicants and examinees by site

Examination Site		Applicants	Examinees	
In Japan	Hokkaido		192	168
	Tohoku	Miyagi	550	496
	Kanto	Gunma	165	154
		Saitama	814	708
		Chiba	934	820
		Tokyo	9,373	7,925
		Kanagawa	965	833
	Chubu	Ishikawa	232	216
		Shizuoka	504	458
		Aichi	1,054	908
	Kinki	Kyoto	881	812
		Osaka	1,877	1,639
		Hyogo	1,148	1,006
	Chugoku	Hiroshima	852	760
	Kyushu	Fukuoka	3,084	2,834
Okinawa		252	241	
Total in Japan		22,877	19,978	
Outside Japan	Hong Kong		12	9
	India	New Delhi	56	36
	Indonesia	Jakarta	655	547
		Surabaya	110	79
	Malaysia	Kuala Lumpur	193	187
	Mongolia	Ulaanbaatar	86	72
	Myanmar	Yangon	17	13
	Philippines	Manila	13	8
	Republic of Korea	Seoul	2,029	1,616
		Busan	598	487
	Russia	Vladivostok	7	3
	Singapore		14	12
	Sri Lanka	Colombo	109	61
	Taiwan	Taipei	189	139
	Thailand	Bangkok	122	68
	Vietnam	Hanoi	47	29
		Ho Chi Minh City	68	53
	Total outside Japan		4,325	3,419
Grand total		27,202	23,397	

Note: The number of applicants and examinees who selected the English version of EJU are as follows.

	Applicants	Examinees
In Japan	208	177
Outside Japan	1,076	802
Total	1,284	979

2. Examination venues

Name of Prefecture	Name of Examination Venue
Hokkaido	Sapporo International University
Miyagi	Tohoku University Kawauchi-Kita Campus
Gunma *	Tokyo University of Social Welfare Isesaki Campus
Saitama *	Saitama University
Chiba *	Chiba University Nishi-Chiba Campus
Tokyo	Kokushikan University Setagaya Campus
	Takachiho University
	Tokyo University of Technology Kamata Campus
	Mejiro University Shinjuku Campus
	Waseda University Waseda Campus
	Tokyo Gakugei University Koganei Campus
Kanagawa *	Yokohama National University Tokiwadai Campus
Ishikawa *	Kanazawa University Kakuma Campus
Shizuoka	Nihon University, College of International Relations, Mishima Campus
Aichi	Aichi University of Education
Kyoto *	Doshisha University Kyotanabe Campus
Osaka	Osaka University Toyonaka Campus
Hyogo *	Kwansei Gakuin University Nishinomiya-Uegahara Campus
Hiroshima	Hiroshima University Higashi Hiroshima Campus
	Hiroshima University of Economics
Fukuoka	Kyushu University Ito Campus
	Kyushu Kyoritsu University
Okinawa	Okinawa Women's Junior College

\* An examination language "English" was not available.

Country and Region	City	Name of Examination Venue
Hong Kong		The Japan Society of Hong Kong
India	New Delhi	MOSAI Institute of Japanese Language
Indonesia	Jakarta	Depok Campus, University of Indonesia
	Surabaya	I'Mc Center
Malaysia	Kuala Lumpur	KDU College
Mongolia	Ulaanbaatar	Mongolia-Japan Center
Myanmar	Yangon	SEDONA Hotel Yangon
Philippines	Manila	De La Salle University-College of Saint Benilde
Republic of Korea	Seoul	Yeouido Middle School / Youido Girls' High School
	Busan	Gyeongnam Technical High School
Russia	Vladivostok	Oriental Studies Institute, Far Eastern National University
Singapore		The Japanese Cultural Society, Singapore
Sri Lanka	Colombo	Sri Lanka Japan Cultural Centre (Sasakawa hall)
Taiwan	Taipei	The Language Training & Testing Center
Thailand	Bangkok	Old Japan Students' Association, Thailand
Vietnam	Hanoi	Foreign Trade University
	Ho Chi Minh City	University of Social Sciences & Humanities, Ho Chi Minh City

3. Number of examinees by nation/region of origin (Japan)

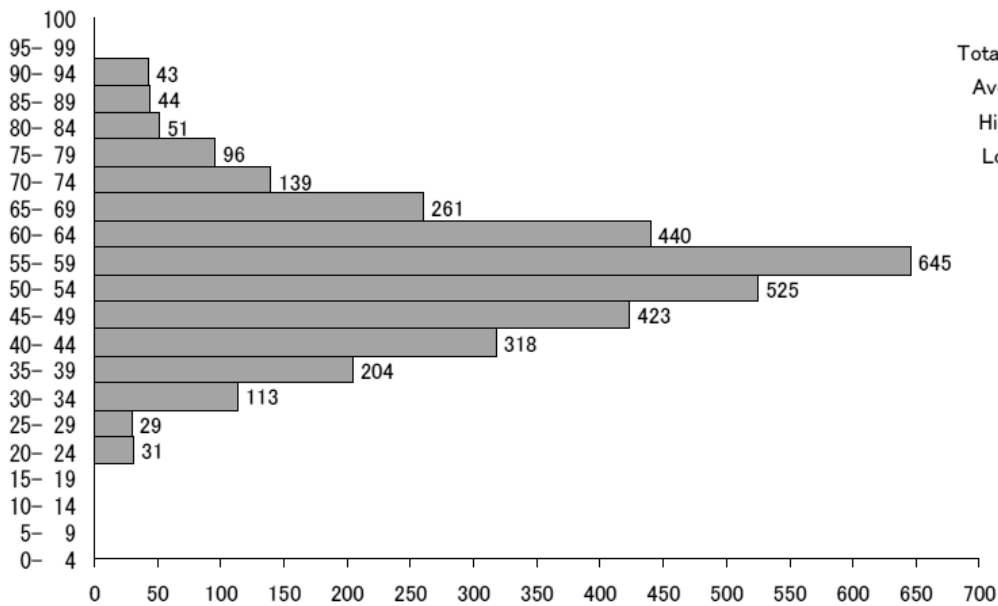
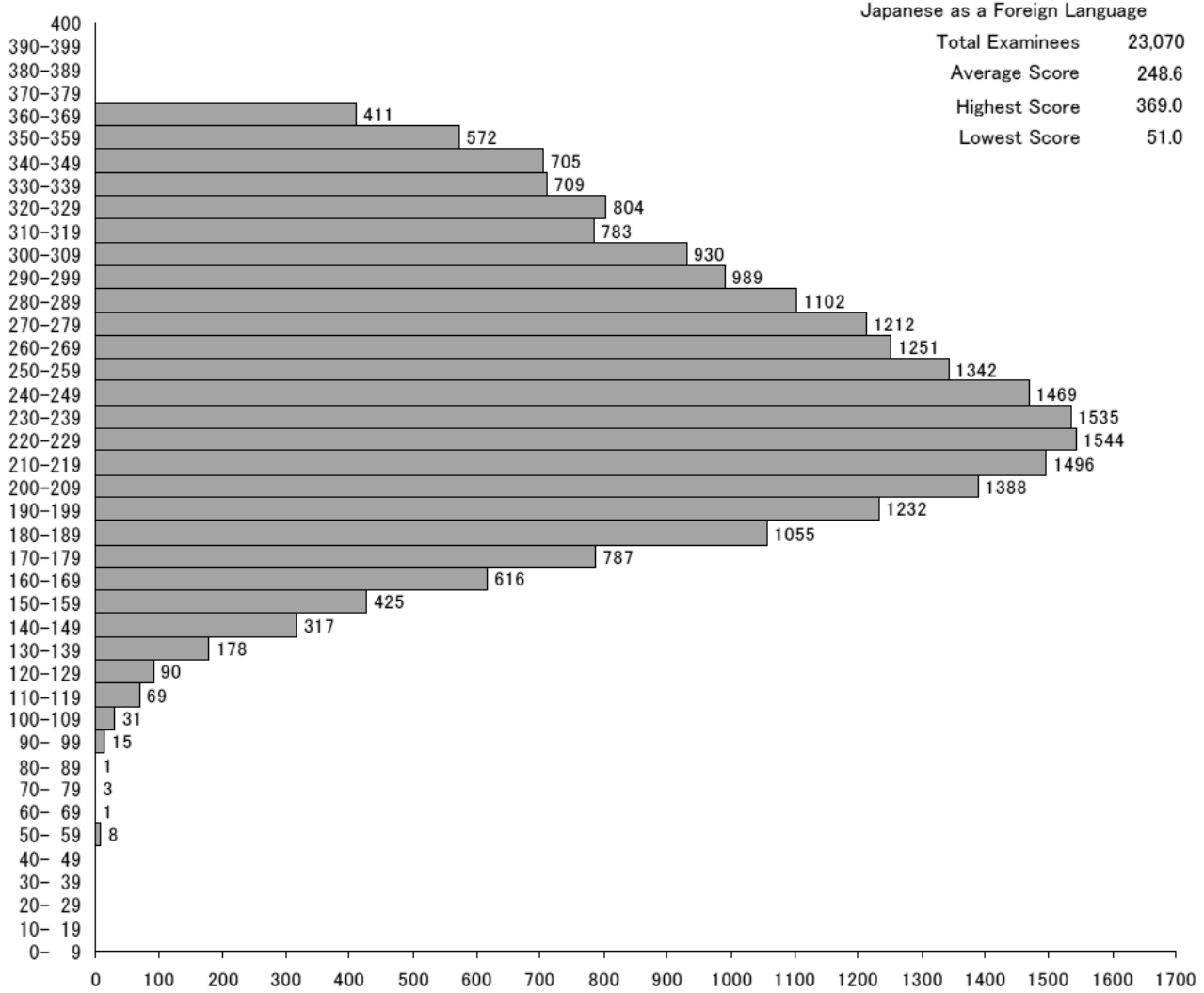
Country / Region	Examinees	Country / Region	Examinees
China	16,198	Kazakhstan	2
Republic of Korea	1,687	Syria	2
Vietnam	553	Pakistan	2
Taiwan	296	Ghana	2
Nepal	288	Netherlands	2
Myanmar	159	New Zealand	2
Malaysia	122	Portugal	1
Mongolia	83	Austria	1
Thailand	82	Nigeria	1
Indonesia	81	Argentine	1
Sri Lanka	65	Azerbaijan	1
Saudi Arabia	53	Democratic Republic of the Congo	1
U.S.A.	35	Bermuda Islands	1
India	22	Bolivia	1
Bangladesh	19	Mexico	1
Cambodia	17	Colombia	1
Philippines	14	Dominican Republic	1
United Kingdom	13	Denmark	1
Canada	13	Switzerland	1
Sweden	12	Romania	1
France	12	Poland	1
Russia	12	Norway	1
Germany	10	Latvia	1
United Arab Emirates	7	Ireland	1
Brazil	7	Hungary	1
Iran	7	Qatar	1
Turkey	6	Finland	1
Uzbekistan	6	Venezuela	1
Singapore	6	Bulgaria	1
Senegal	6	Kyrgyzstan	1
Australia	6	Moldova	1
Cameroon	4	Timor-Leste	1
Italy	4	Democratic People's Republic of Korea	1
Spain	3	Tajikistan	1
Benin	3	Brunei	1
Laos	3	Iraq	1
Ukraine	2	Others	16
Kenya	2	Total	19,978
Peru	2	75 countries / Regions	

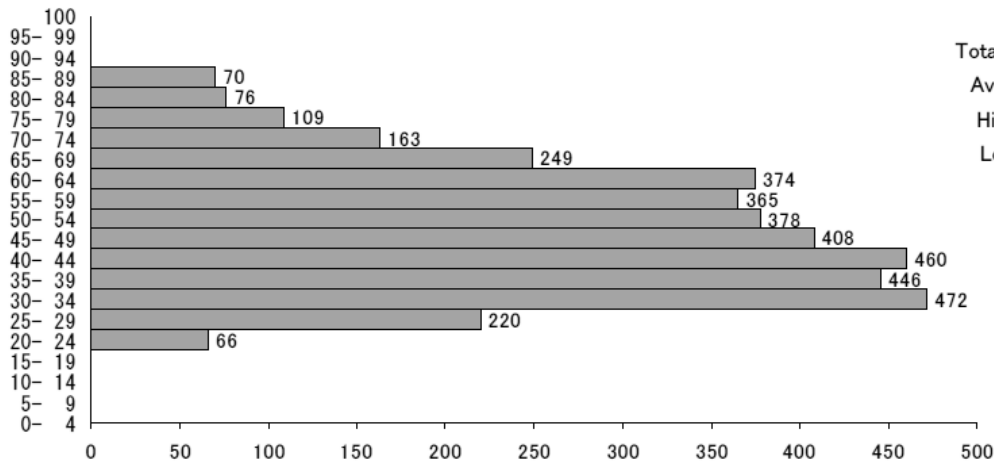
### List of Average Scores by Subject

Subject (Score Range)		Examinees	Average Score	Highest Score	Lowest Score	Standard Dev.
Japanese as a Foreign Language	Listening and Listening- Reading (0-200)	23,070	107.6 (53.8%)	173 (86.5%)	26 (13.0%)	28.4 (14.2%)
	Reading (0-200)		141.0 (70.5%)	196 (98.0%)	25 (12.5%)	32.9 (16.5%)
	Total (0-400)		248.6 (62.2%)	369 (92.3%)	51 (12.8%)	57.1 (14.3%)
	Writing (0-6)		28.9 (57.8%)	50 (100.0%)	0 (0.0%)	9.3 (18.6%)
Science	Physics (0-100)	3,362	54.8 (54.8%)	94 (94.0%)	24 (24.0%)	12.8 (12.8%)
	Chemistry (0-100)	3,856	49.3 (49.3%)	89 (89.0%)	20 (20.0%)	15.4 (15.4%)
	Biology (0-100)	1,334	58.6 (58.6%)	91 (91.0%)	17 (17.0%)	13.2 (13.2%)
Japan and the World (0-200)		10,713	118.2 (59.1%)	198 (99.0%)	10 (5.0%)	33.5 (16.8%)
Mathematics	Course 1 (0-200)	9,585	109.6 (54.8%)	186 (93.0%)	30 (15.0%)	31.6 (15.8%)
	Course 2 (0-200)	3,610	113.9 (57.0%)	181 (90.5%)	35 (17.5%)	17.1 (8.6%)

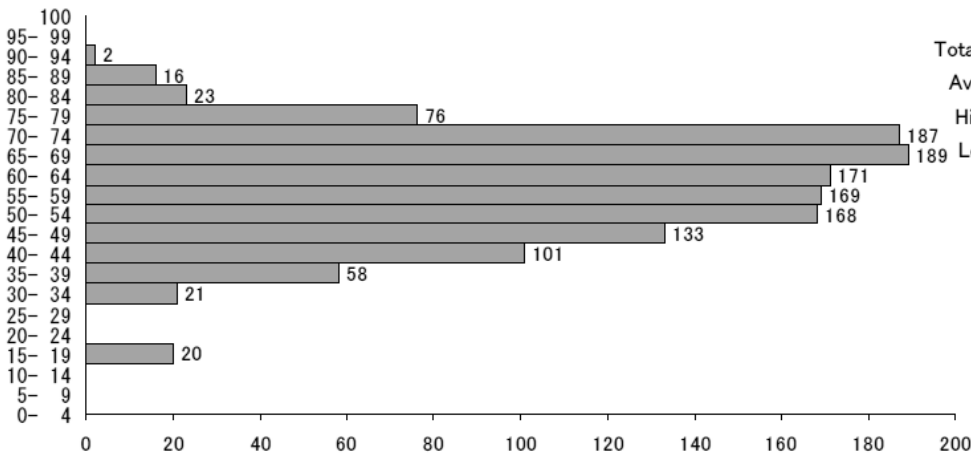
Note: Percentages indicate the ratio to a perfect score.

# Score Distribution

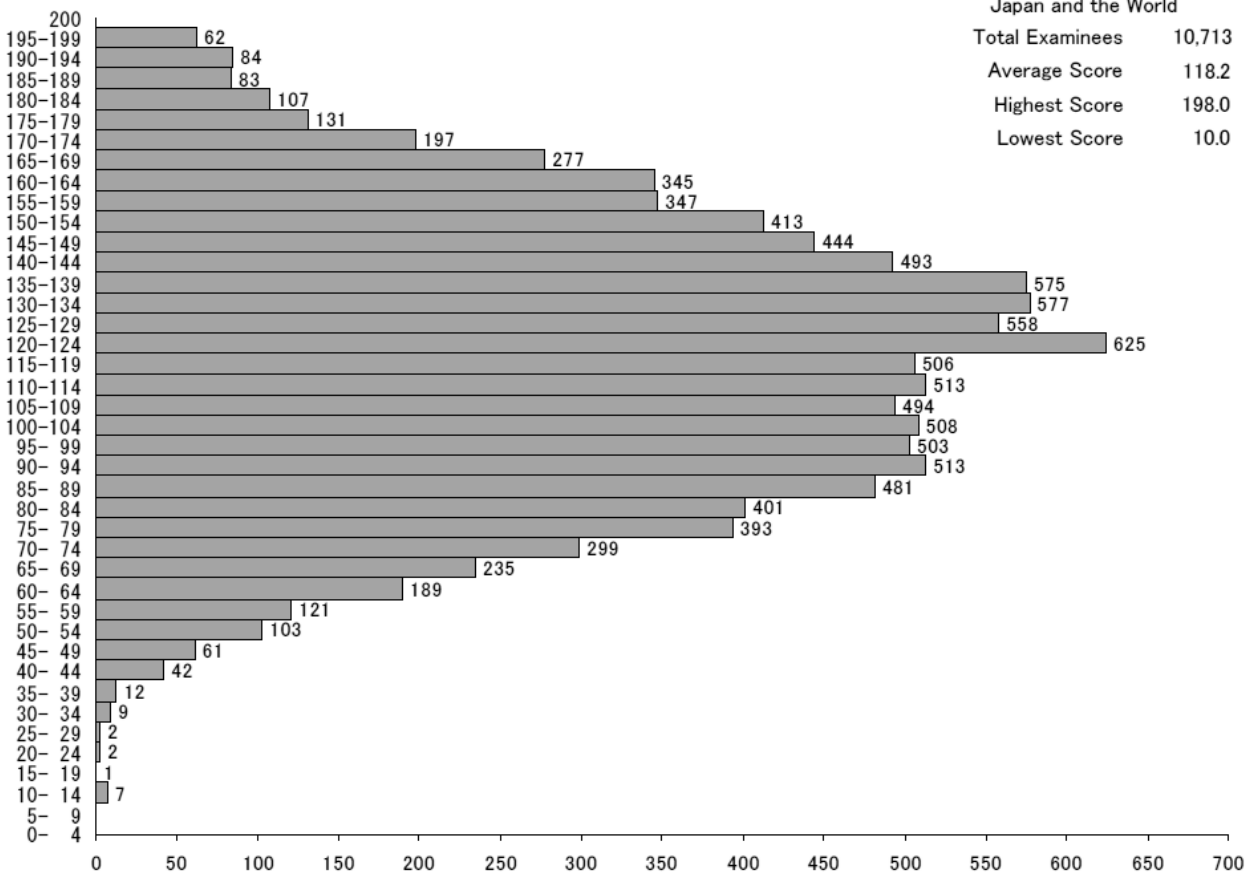




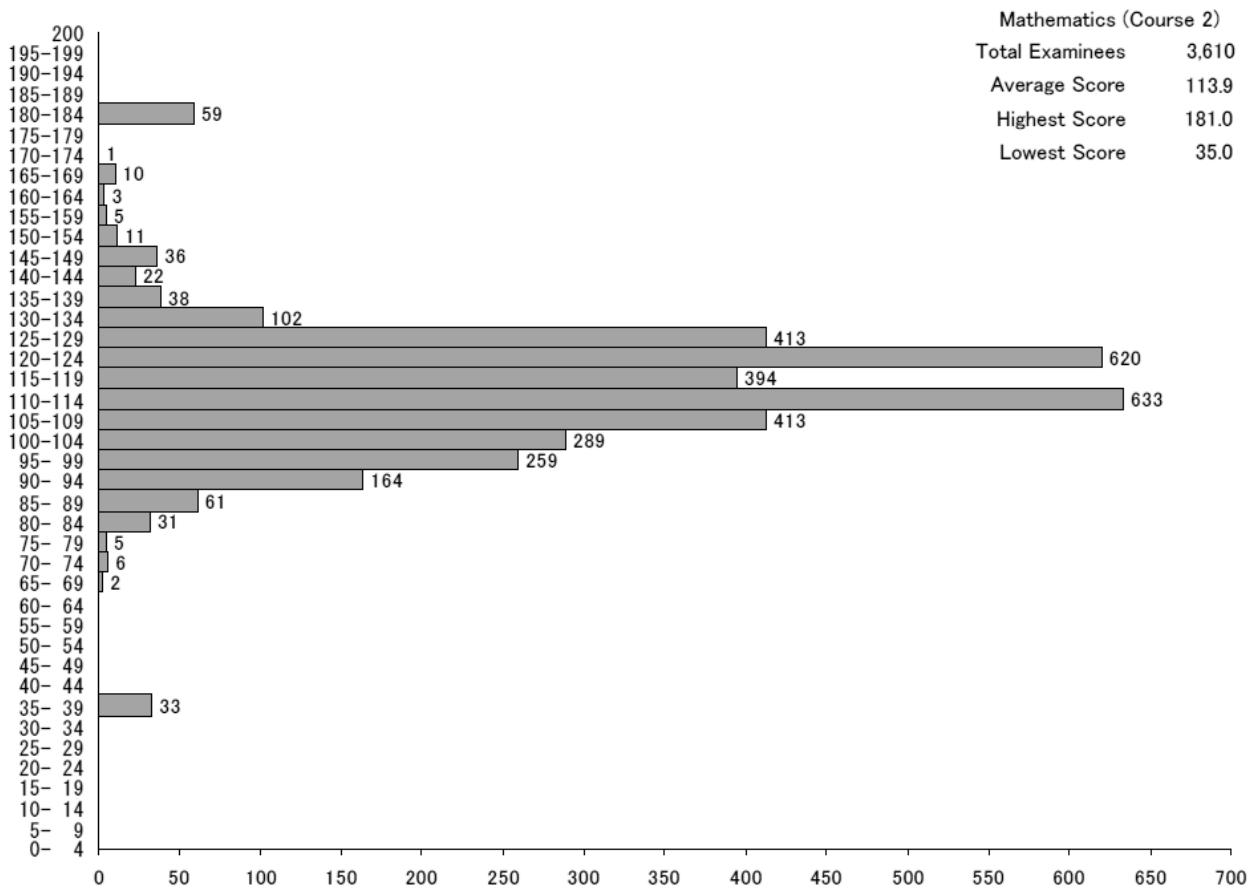
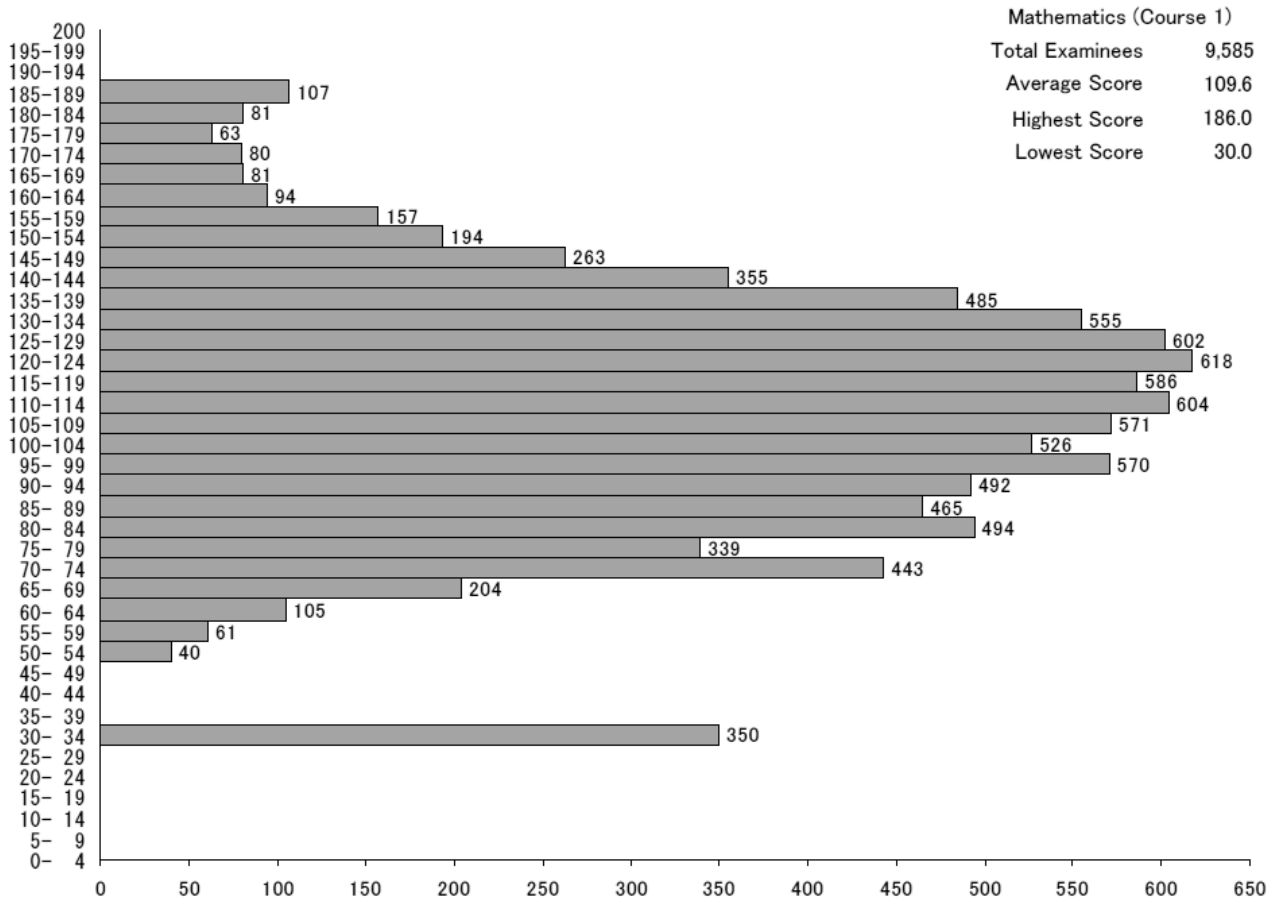
**Chemistry**  
 Total Examinees 3,856  
 Average Score 49.3  
 Highest Score 89.0  
 Lowest Score 20.0



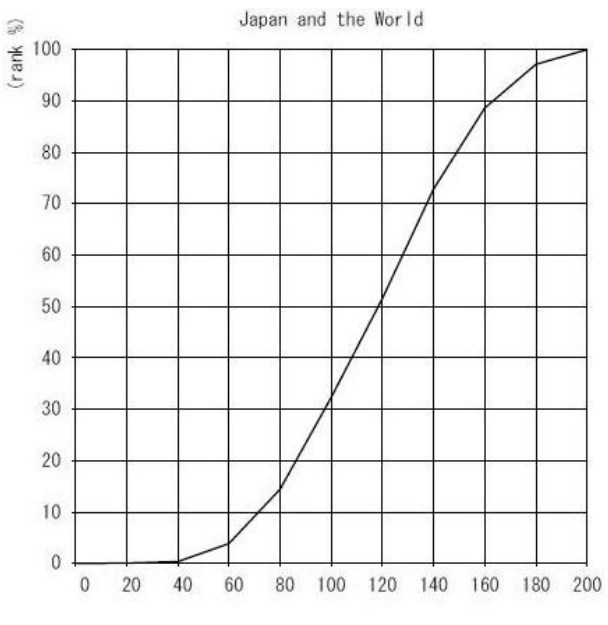
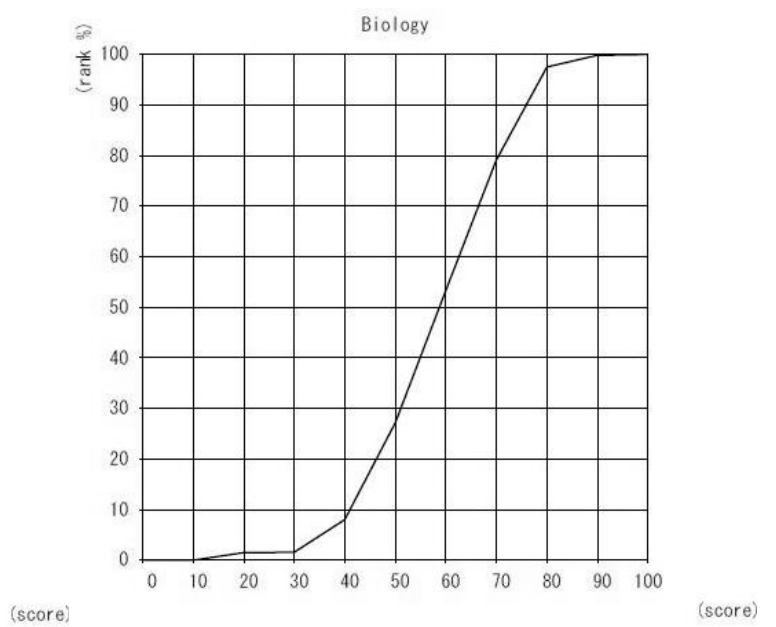
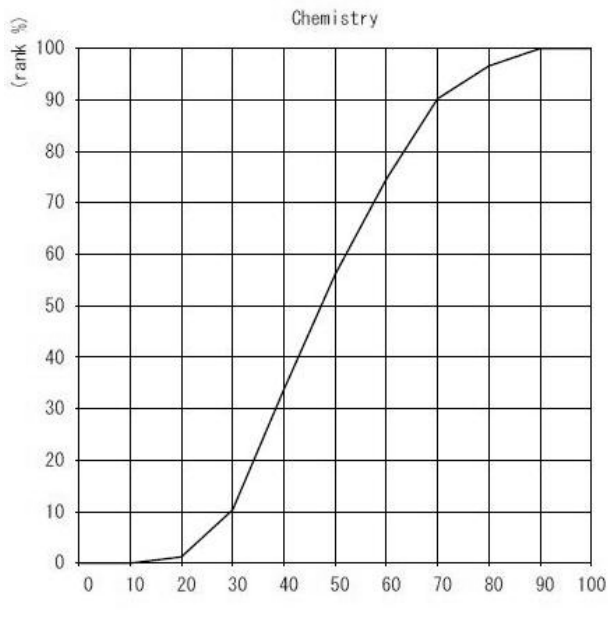
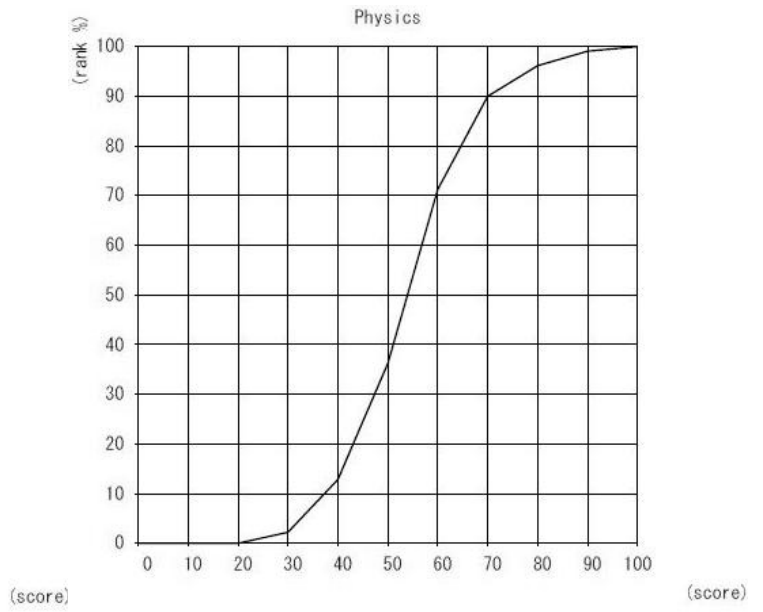
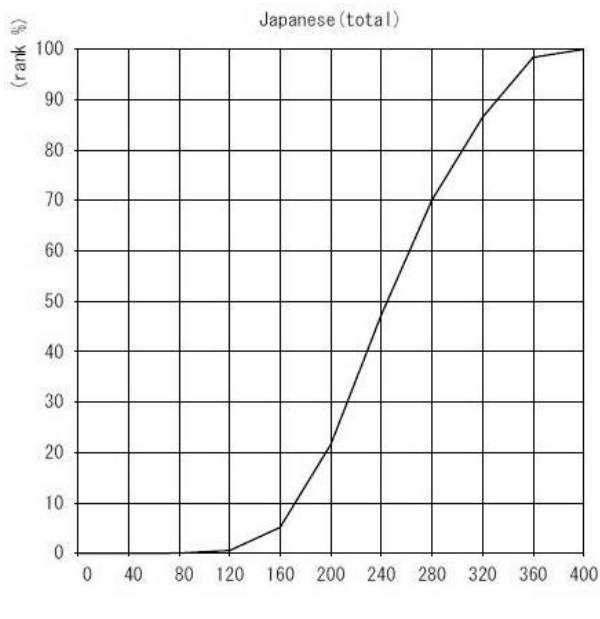
**Biology**  
 Total Examinees 1,334  
 Average Score 58.6  
 Highest Score 91.0  
 Lowest Score 17.0

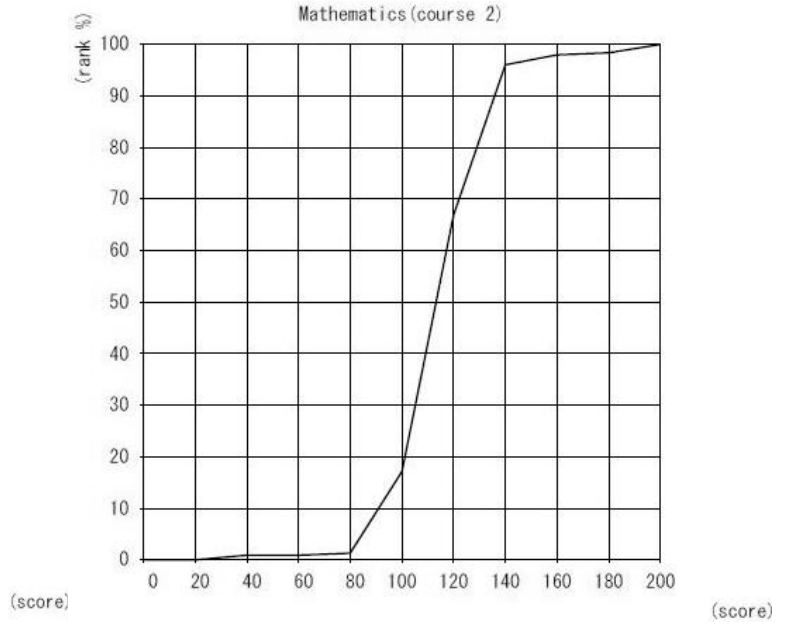
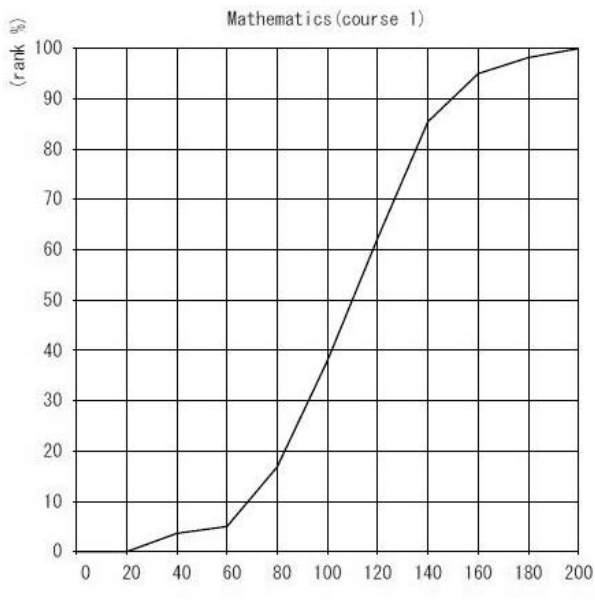


**Japan and the World**  
 Total Examinees 10,713  
 Average Score 118.2  
 Highest Score 198.0  
 Lowest Score 10.0



## Cumulative Distribution of Scaled Score





The cumulative distribution of the total score displayed above indicates at which position the score achieved by an examinee stands in the total rankings.

Taking the example of an examinee whose total score is 240 from the two fields of the test of Japanese as a Foreign Language, "240" on the horizontal axis corresponds to "70%" on the vertical axis (ranking). It means the percentile ranking of this examinee is "70%". In other words, the number of examinees who are below this examinee occupies 70 % of the total examinees.

The percentile ranking allows you to relatively compare your score, i.e. showing the position of the examinee in the entire group who took the examination.

