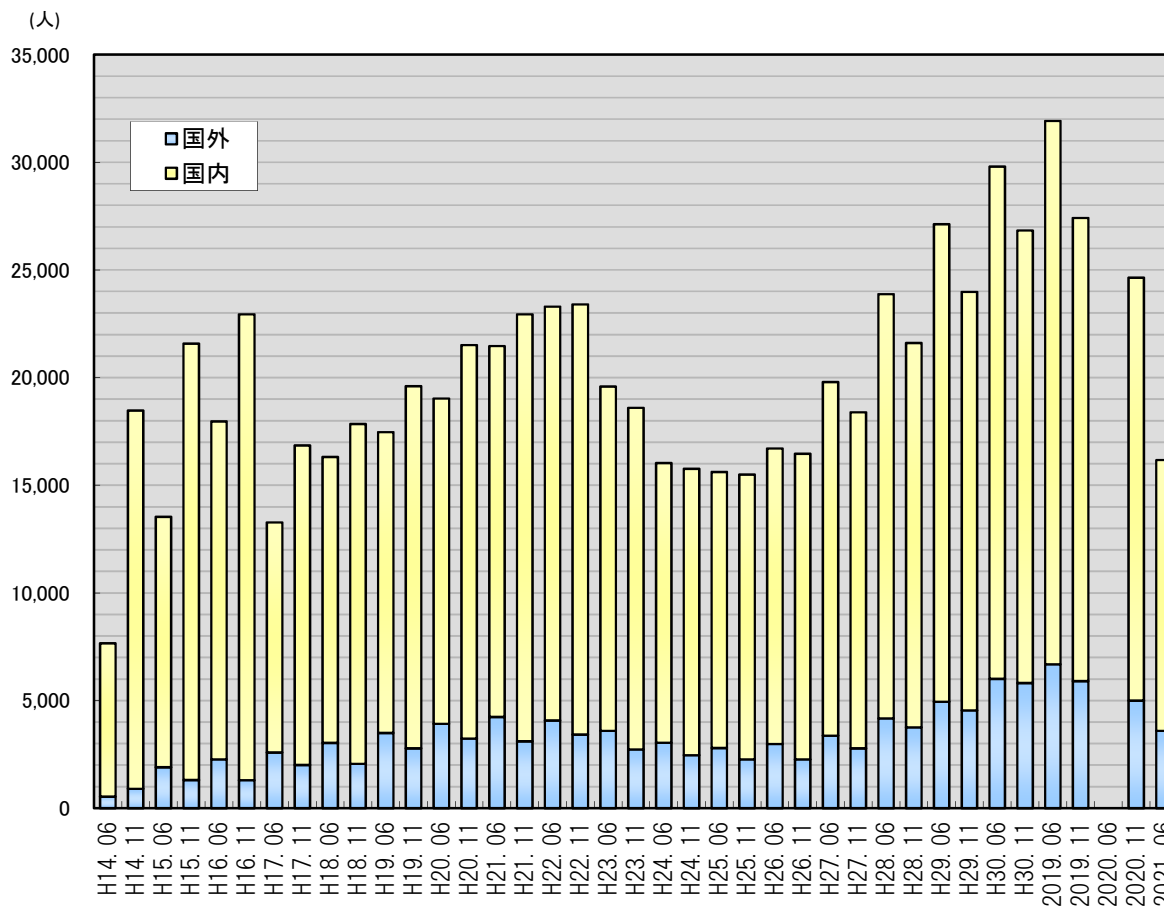


日本留学試験 受験者数 推移

	国内	国外	合計
H14.06	7,123	532	7,655
H14.11	17,566	900	18,466
H15.06	11,633	1,901	13,534
H15.11	20,270	1,307	21,577
H16.06	15,691	2,268	17,959
H16.11	21,641	1,297	22,938
H17.06	10,686	2,584	13,270
H17.11	14,840	2,010	16,850
H18.06	13,276	3,032	16,308
H18.11	15,786	2,060	17,846
H19.06	13,970	3,496	17,466
H19.11	16,814	2,781	19,595
H20.06	15,109	3,917	19,026
H20.11	18,276	3,234	21,510
H21.06	17,224	4,237	21,461
H21.11	19,827	3,108	22,935
H22.06	19,220	4,074	23,294
H22.11	19,978	3,419	23,397
H23.06	15,988	3,591	19,579
H23.11	15,862	2,730	18,592
H24.06	12,994	3,038	16,032
H24.11	13,303	2,460	15,763
H25.06	12,821	2,792	15,613
H25.11	13,232	2,265	15,497
H26.06	13,729	2,978	16,707
H26.11	14,195	2,263	16,458
H27.06	16,423	3,368	19,791
H27.11	15,608	2,777	18,385
H28.06	19,704	4,168	23,872
H28.11	17,853	3,754	21,607
H29.06	22,178	4,943	27,121
H29.11	19,438	4,540	23,978
H30.06	23,793	6,003	29,796
H30.11	21,013	5,815	26,828
2019.06	25,237	6,682	31,919
2019.11	21,507	5,905	27,412
2020.06	0	0	0
2020.11	19,642	4,992	24,634
2021.06	12,576	3,591	16,167



←2020年度第1回(6月実施)は新型コロナウイルス感染拡大の影響により中止